



Rangers' Review

Volume 22

No. 9

Mount Lofty Rangers Inc.
PO Box 1150, Blackwood SA 5051
www.mountloftyrangers.com.au

February

2017



In this issue:

Prez Sez	3	Training	21
Uniform	8	Trip Calendar	22
Show n Shine	12	Guest Speaker	23
Trip Report: Beachport	16	Octoberfest	27

Mount Lofty Rangers Inc.

About Us

The Club's aim is for its members to enjoy all aspects of owning and using our 4WDs while enjoying the diverse surroundings offered by this great country. We are a club of 4WD enthusiasts who enjoy challenging driving, regular trips, camping, camp cooking and a great social scene on and off track.

Membership

Membership is open to anyone who owns a 4WD (regardless of its make or model) and has a passion for driving. Mount Lofty Rangers Inc is an affiliated member of the South Australian Association of Four Wheel Drive Clubs (FWDSA).

Club Outings

The Mount Lofty Rangers provides regular day, weekend and extended four wheel drive trips, lead by experienced trip leaders. Trips are rated on the level of difficulty and are available to all members and guests.

The club has a dedicated social committee which also organises regular events that complement the club trips.

Experience and Training

Our current members possess a wide range of skills ranging from beginner to advanced. The club has a number of accredited instructors and assessors, and is involved in regular training via the SAAFWDC Driver Training Unit.

Meetings

Club meetings are the second Monday of each month* and are held at the **Blackwood Football Club, Trevor Terrace, Blackwood**

Time: 7:15 pm for 7.30pm start

*Except where this Monday falls on a long weekend then the meeting is held on the third Monday of the month.

For more information on the Club please check out our website at:

www.mountloftyrangers.com.au

MT LOFTY RANGERS UHF CLUB CHANNEL NO 27



Prez Sez

Beachport has come and gone, so I hope there are trip reports and photos to share in this newsletter. We thoroughly enjoyed ourselves and the patrol behaved itself – which was good! It was great to see some of our recent visitors and new members head south and join us for the weekend, I'm sure they came home convinced they made the right choice by joining MLR. As usual on weekends like this, there are many vehicles with not all from clubs, so it can be difficult to ensure all have sandflags but as a whole from what I saw the SA clubs had sandflags..... someone on one of the trips I did suggested that the SA/VIC border should be barricaded on long weekends to stop the Mexicans coming over to our sand unless they have a sandflag! Obviously with so many cars over a short space of time, the tracks and beaches get rather cut up which adds to the challenge and the potential to get bogged or do damage – sadly we had 5 incidents of damage with 2 going home on a truck (I know how you feel on this one!), the bright side of this is that the damage was not sustained by anyone being a “dickhead” and can be fixed with a little time and a few dollars. I cannot remember a Beachport where there has been so much damage.....

For those that weren't at Beachport – Happy Hour nibbles have gone up a notch or two, with crayfish one night and the smoked trout on another night – will caviar and truffles be next?



A night drive has almost become a tradition of our trip to Beachport – this year 4 trusting soles joined me for a little drive leaving the caravan park at 8:30pm, along the beach to 5 Mile drift then after much badgering we went further off into the dunes. We stopped on the top of one of the dunes so the kids could do some satellite spotting..... no satellites but much discussion was had on which star was Mars and Venus, Google and the Star app won out! Then we had a couple of different versions as to how to find South using the Southern Cross, they were all fairly close but if you were to travel a 100km or so a few degrees out could mean you are miles and miles away! I have sent Kylie a couple of links from the old interwebs as to the correct procedure to find south which you should find elsewhere in the newsletter.

Last week we had an unofficial get together as a committee to start planning for our year ahead – mid year dinner, swap meet, Octoberfest, Christmas get together and general trips, with a BBQ at Lothar and Sheena's (thanks again for the offer of your house to hold this). So, as you can see there are things happening, all we need you to do is put some trips up, be it social outings, day trips, weekend trips or extended trips – you'll never know who would like to join you if you don't put a trip sheet up and don't forget the trip to Africa (Namibia and Botswana) next year which is well into the planning stages – If you're interested and need to know more please talk to Lothar. Our AGM is only a couple of months away, so please start thinking about it - Vice President and Secretary are up for nomination for 2 year terms and all other positions except President and Treasurer are also up for nomination.

Please do not hesitate to give me a call if you have any ideas or queries – let's make 2017 the best one yet for MLR.

YOUR COMMITTEE 2016-17

COMMITTEE DIRECTORS

	<p>PRESIDENT</p> <p>Tom Doody</p> <p>president@mountloftyrangers.com.au</p>
	<p>VICE PRESIDENT</p> <p>Gary Light</p> <p>vp@mountloftyrangers.com.au</p>
	<p>TREASURER</p> <p>Paul McGregor</p> <p>treasurer@mountloftyrangers.com.au</p>
	<p>SECRETARY & PUBLIC OFFICER</p> <p>Jo Reed</p> <p>secretary@mountloftyrangers.com.au</p>
	<p>TRIPS COORDINATOR</p> <p>Roger Wilkinson</p> <p>trips@mountloftyrangers.com.au</p>
	<p>FWD SA DELEGATE</p> <p>Ron Versteeg</p> <p>delegate@mountloftyrangers.com.au</p>
	<p>MEMBERSHIP OFFICER</p> <p>Jordan Ray</p> <p>membership@mountloftyrangers.com.au</p>

YOUR COMMITTEE 2016-17

COMMITTEE MEMBERS

	<p style="text-align: right;">WEBSITE OFFICER Michelle Watkin webmaster@mountloftyrangers.com.au</p>		
	<p style="text-align: right;">MERCHANDISE OFFICER Sheena Dunaiki merchandise@mountloftyrangers.com.au</p>		
	<p style="text-align: right;">PROPERTY OFFICER Peter Reed property@mountloftyrangers.com.au</p>		
	<p style="text-align: right;">EDUCATION OFFICER Steve Townsend training@mountloftyrangers.com.au</p>		
	<p style="text-align: right;">MAGAZINE EDITOR Kylie Cooper magazine@mountloftyrangers.com.au</p>		
	<p style="text-align: center;">COMMITTEE MEMBER Wayne Ritchie</p>		<p style="text-align: center;">COMMITTEE MEMBER Rob Stevens</p>
	<p style="text-align: center;">COMMITTEE MEMBER Craig Watkin</p>		<p style="text-align: center;">COMMITTEE MEMBER Marianne Sag</p>
	<p style="text-align: center;">COMMITTEE MEMBER Lothar Dunaiki</p>		



Paul McGregor – 0408 900 889

Keeping you off the beaten track

Talk to us about:

Motor Vehicle

- Agreed value options
- All accessories included
- Modifications OK
- Full off-road cover
- No claim bonus protection
- Flexible cover

Caravans and Campers

- Australia wide cover
- Agreed value options

Camping

- Theft from open air
- Fire & malicious
- Cover in vehicle and at campsites

Additional benefits

- Annual or monthly payments
- Australia wide cover
- 4WD club discounts

Call us today, quoting
'GET OFFROAD' and get
a better deal for your 4WD.



1800 633 745 | lisa.brock@ajg.com.au

[@AJG_Australia](https://twitter.com/AJG_Australia) | [in](https://www.linkedin.com/company/ajg-australia)



Arthur J. Gallagher



Tyrepower

Blackwood

Specialising in -

Wheel & Tyre packages

Suspension upgrades

Vehicle Servicing

Wheel Alignments

Bull Bars and Rear Bars



KUMHO TYRE



Tyrepower Blackwood - 205 Main Road, Blackwood SA, 5051

Ph: (08) 8370 2195 W: www.tyrepowerblackwood.com.au

E: daniel@tyrepowerblackwood.com.au

UNIFORM

We have a new supplier for our uniforms and they have provided better guidance on measuring and choosing the best size garment for order.

How to measure: select a similar garment that fits you and lay it flat. Then measure from side seam to side seam under the armhole; this will give you the half chest measurement shown on the sizing guide.

Note the half chest measurement is the *finished garment size* not your body size

Khaki Shirt

We have new khaki shirts with the MLR logo, available for order, either short or long sleeve for \$40. Add your name for an extra \$7.



Description

180 gsm
100% cotton drill work shirts
soft and durable
UPF50+
Complies:
AS/NZ 4399:1966
AS 2919-1987

Sizing guide

Here you will find the sizing for this product

SIZE	XS	S	M	L	XL	XXL	3XL	5XL
HALF CHEST	55	57.5	60	62	64.5	67	69.5	74

Polo Shirts

Available for order in the two designs: Tyre print and Flinders print
Short sleeve \$55

Long sleeve \$58

Add your name for an extra \$5.50



UNIFORM

Jackets and Vests

These are still available to order

Softshell jackets - Ladies \$70; Mens \$75

Softshell vest - Ladies \$55; Mens \$60

Add you name for an extra \$7.00



POLO Sizing Chart - NEW SIZES 2016

Emmsee Sportswear

PLEASE NOTE: $\frac{1}{2}$ chest measurement is finished garment size **NOT BODY SIZE**
When measuring length start at highest point near neck / shoulder

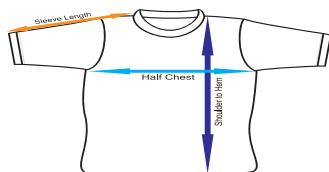
Emmsee sizes	$\frac{1}{2}$ chest	high point of shoulder		$\frac{1}{2}$ chest
Size 6	38	53		kids 6
Size 8	40	56		kids 8
Size 10	43	58		kids 10
Size 12	44	60	ladies 8	kids 12
Size 14	47	65	ladies 10	kids 14
Size 16	49	70	ladies 12	kids 16
Size 18	53	74	ladies 14	mens S
Size 20	54	75	ladies 16	mens M
Size 22	58	76	ladies 18	mens L
Size 24	60	78	ladies 20	mens XL
Size 26	63	81	ladies 22	mens 2XL
Size 28	66	81		mens 3XL
Size 30	70	81	ladies 24	mens 4XL
Size 32	75 hip 79	81	ladies 26	mens 5XL
Size 34	79 hip 83 85			

How to measure a garment to get a half chest measurement

Lay a garment that fits you flat and measure from side seam to side seam under the armhole this will give you the half chest measurement

To measure the finished length - measure next to the neck of the garment near the highest point of the shoulder

Where to measure



Contact Sheena to place an order:

merchandise@mountloftyrangers.com.au

Club equipment for loan!

- Grate mates
 - *Uniden* UHF handheld radios
 - Tyre repair kit (large & small)
 - *Tifor* hand winch and cable
 - Car Bra
 - Trestle tables, plastic folding 1.8m (x2)
 - Recovery bag (inc snatch straps, extension strap, tree trunk protector and shackles)
- Gazebo 3m x 3m
 - Hot water urn and kettle
 - Bead breaker
 - Drag chains (x 2)

***All club equipment is securely stored within the club trailer @ Lonsdale**

For further information on any loan equipment, please email Property Officer: property@mountloftyrangers.com.au



Specialising in ;



- Aluminium windows and doors.
- Sliding, awning, double and single hung domestic windows.
- Sliding, hinged, French, multi-stack and bi-fold domestic doors.
- Full range of security doors and including "Invisi-gard" security
- Aluminium balustrading.
- Full range of aluminium commercial windows and doors.
- Window and door replacement (not glass replacement)

New homes or renovating. Club members receive 10% discount.

Ph (08) 8268 8808 fax (08) 8347 3152 Email ron@aawindows.com.au



**Design
& Print
Copy**

197 Main Road
Blackwood SA 5051
p 08 8370 3344
f 08 8370 2800
David@bcps.net.au

All General Printing

Offset and Digital

- Business Cards
- Brochures
- Magazines
- Envelopes
- Stationery
- Dockets Books
& more

- Businesses
- Clubs and Associations
- Schools
- Government

Belair Road Auto Electrical

Proud Sponsors of the Mount Lofty Rangers Magazine

Auto Electrical 4x4 Installations
Mechanical Servicing
Brakes, Radiators & More
BOSCH Filters & Service Parts
REDARC Solar & Electrical Dealer
RAA and BOSCH Battery Dealer
Air Conditioning Repairs (AU27966)
Caravans, Camper Trailers, Motor Homes



59 Belair Road, Kingswood SA, 5062
Ph: 08 8271 7617 FAX: 08 8272 8510
E-Mail: brae59@internode.on.net

SHOW N SHINE

At our January meeting we had a "Show and Shine" with a difference. The weather was perfect, and many of the vehicles were very well prepared. Everyone joined in, either showing their vehicles, admiring the said vehicles or acting as a volunteer "co-opted" judges.

Prizes were awarded for categories which included: most cluttered car, shiniest petrol/ diesel cap, most worn but still legal spare tyre, most gadgets attached to the roof. Thanks to everyone who participated and helped.

Photos courtesy of Paul Parsons



Steve's 200 series Landcruiser



Jo & Tracy



Trevor & Phil



Peter Reed's gas BBQ



Peter Reed

SHOW N SHINE



Frank's new FJ



Tom's Patrol



Eric's new Prado



Eric's spot lights!



Ann & Malcolm's ride



SHOW N SHINE



Rob Steven's Defender



Ladies Tracy, Lyn & Jo



Phil's Patrol



Under Tom's bonnet



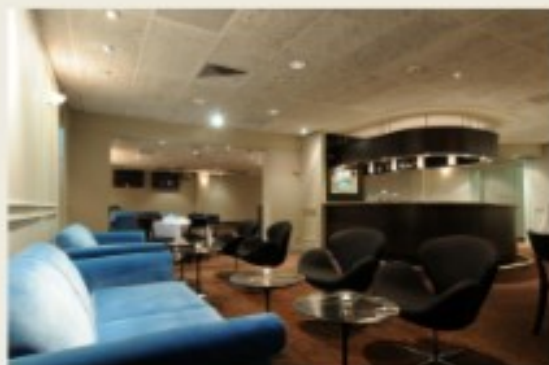
Under Trev's bonnet



Trevor's Patrol



Book your function with us!



Go to our website for more details

www.belairhotel.com.au

Or call Stacey 8278 8777

TRIP REPORT: BEACHPORT

Report courtesy of Lloyd Weaver

Photos courtesy of Lloyd Weaver (via MLR fb page), Les Toomer & Kylie Cooper

After arriving in Beachport mid-afternoon on Thursday it was time to set-up camp, have a beer and walk around saying hello to plenty of familiar faces, plus a few new faces. The weather was perfect hovering around 23 degrees with very little wind so happy hour came and went as everyone mingled and I think the main topic of conversation was how Geoff was holding up after being swamped by a wave on the way down to Carpenters Rocks with Shorty, Dan, Les, and Jordan which moved his car a few meters towards the ocean following by another wave going over his roof (possible slight exaggeration). Sounds like a situation that would test the nerves of just about anyone. After a few beers and glasses of wine it was time for bed.



Digging out Dave's car



Glenn's car wash experience



Friday morning the trip sheets went up with plenty of options for people to visit a variety of places including: playing in the sand dunes, a Robe to Beachport run with some ice cream in there for good measure, Nora Creina with the nudist beach (it was good to see them being sunsmart and wearing hats), Little Dip Conservation Park and some wineries for something different. It was an overcast morning but once the sun burnt the cloud off we have another great day weather wise.

TRIP REPORT: BEACHPORT



Convoy return from the dunes



Lined up at Zema Winery

We chose to have a play in the sand dunes with some help from a local friend of Tom's called Jack. Having lived his whole life down there he knows the sand dunes like the back of his hand. We all followed Jack in his little black beast of a Jeep and as we went past the lake he said that with all the crazy weather we've been having it was one of only a few times that the lake has been full. We played around for a while taking on a variety of challenges until Peter and Anne had some issues with the front end of their Colorado, we got him back to the inland track where we made his way back to camp and we stayed out playing. It was great to get some sand driving tips from Jeff and I'll need a bit more practice before not braking and actually driving down a steep sandhill becomes second nature. We came across Shorty, who had taken a group out into the sand dunes as well, and noticed he was stuck on the crest of a dune and there was no shortage of people keen to get this moment on camera, a quick snatch and he was on his way again.



After watching a combination of techniques from not quite enough momentum to get over, to fully launching over the crest we left this group to continue playing while we drove around some more. Tom was slowly getting used to how his big new engine goes in the sand when we came across what could be best named "Everything but a Jeep Hill", as a Jeep club in front of us had a couple of vehicles unsuccessfully trying to climb the easier right hand track up the dune. Jack decided to make his own tracks up the dune making it look easy before we all managed to get up the right hand track without a problem before finding a nice spot on top of a dune for lunch.

TRIP REPORT: BEACHPORT

After lunch we made our way to "Jeep Hill" which is where the day got interesting for some of us... me! We all lined up on the top and a video was taken as we all went over the edge in unison. Seeing as the boys in the car loved going over the edge of the dunes in the front seat I decided that I would descend the dune and then make my way up again along the ridge so that they could each have a go. I had already walked over and looked and decided there was enough room to drive back up the top along the ridge line. Unfortunately as I came around and started going up the ridge I was a bit too far to the right and my car slipped off the edge and as soon as I realised that this wasn't good I slammed the brakes on and came to a stop pretty quickly on a very unnatural angle. Looking out the drivers window was a pretty steep slope down the dune and looking out the passengers window was nothing but beautiful clear blue skies. After a quick mayday call on the radio everyone made there way up to where I was to assess the situation. With some wise heads like Tom, Jeff and Reedy around it was decided to get the boys out of the car, which was a bit of a climb out the passenger side, while I sat there admiring the view and wondering what that sound was before I realised it was my heart pounding in my chest, we won't talk about what other parts of my body were doing at this point in time. The plan was to attached a winch from Bones car and a snatch strap from Tom's car to the front 2 anchor points while we used Mike's car to attached a strap to the rear recovery point with the theory being to stop the car wanting to go down the slope. As this was happening I thought I'd better put all the windows up because if it does go down the hill I wouldn't want any sand to get in the car... I probably wasn't thinking too clearly at the time. Once everything was attached it was time to leave the car running in neutral and me to climb out of the car, so with some assistance from Reedy I managed to clamber out the passenger side and breathe a sigh of relief. One concern that everyone was having was that all the points were attached to the low part of the car with nothing stopping the top of the car from going down the hill if that's the way it started to go. So after some good old fashioned digging on the passenger side of the car we started slowly pulling the car up and off the edge. We noticed that the front wheels started ploughing in the sand and turning back down the hill so we stopped and did a combination of some more digging, which seemed to be making the car fall in the right direction, and using an ocky strap to keep the steering wheel hard locked left. Once this was done and we continued pulling everything went to plan and the car was back on a level surface again. To say that was an "Oh Shit/Whoops" moment is an under statement and the Tim Tam's I offered to everyone at lunch seemed a poor payment for the help offered by Jeff, Tom, Reedy, Mike and Bones. Thanks to everyone as without that sort of experience and knowledge the whole situation could have ended up much different. As I tried to lower my heart rate a few of the guys had a go at "Jeep Hill" with Reedy, Tom and Mike all successfully conquering it so the executive decision was made to rename it just a hill.

TRIP REPORT: BEACHPORT

After this we made our way back to Beachport along the beach which was pretty hassle free apart from Jeff getting stuck once. All in all it was a great day out with an interesting recovery thrown in and after making it back to camp it was time to shout everyone that helped a beer. We settled in for happy hour with some beautiful fresh lobster thanks to Pam and Neil and then dinner as the temperature dropped and out came the jackets to keep warm.

Saturday morning we woke to a dewy morning and the trip sheets went up again, after yesterday's events I decided on a more casual run into Robe along the beach for ice cream but today didn't quite go to plan either. After a pretty easy run up the beach to Nora Creina we started making our way through Little Dip Conservation Park when Lesbo's front right hand wheel dropped down to the bump stop. After some investigation he worked out that his rear torsion bar mount had broken so we all made our way into Robe on the dirt road to see if anything could be done. After some lunch on the foreshore and an ice cream we found Les and he had been to see someone locally who couldn't help him out so a call to the RAA was next and Les's car was going back to Adelaide on the back of a truck, as was Bullie's Jeep after his power steering pump broke earlier on the weekend. Again the moment wasn't lost as photos were taken of Les's 100 Series on the back of a truck.



After getting back to camp it was the usual happy hour to hear everyone's stories from the day and dinner before going to bed and unfortunately having to pack up in the morning ready for the trip home.

So despite a few interesting recoveries and a few mechanical issues for some people it was a great weekend with great weather, great location, great driving, great scenery and most of all great company and I'm already looking forward to next year... minus the incident on Jeep Hill.

TRIP REPORT: BEACHPORT

Also here is a list of a few things I learnt on the weekend:

- Eric likes fishing
- Les Scott won the prize for the biggest van in the park
- Frank discovered that certain buttons on his new FJ Cruiser make it even better
- Steve Brown likes to keep his new car very clean
- I need to keep an eye on which trips Pam and Neil are doing in the future due to the possibility of eating more lobster
- Mitsubishi Pajero's rear bumpers acts like a reverse shovel in the sand dunes
- Jack's 15yo Jeep is an absolute weapon in the sand and he loves every minute of it



TRAINING

2017 DATES

MLR TRAINING

25 th Feb	Trip planning	Start from Meadows
6-7 th May	Rock/undulating terrain	Morgan
27-28 th May	Sand driving & recovery	Peake
22 nd July	Tyre repair	Ashbourne
7-8 th October	Sand driving & recovery	Peake (with Jeep club)

DTU TRAINING

1-2 nd April	Theory	Cavan
8-9 th April	Practical	Morgan

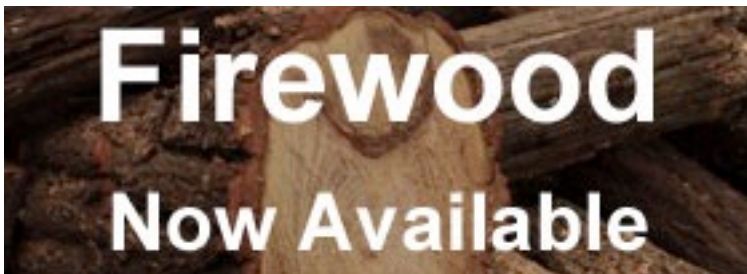
For further information on training please email Steve Townsend
training@mountloftyrangers.com.au

CHEAP FIREWOOD AVAILABLE!!!!

Help Steve clean up fallen trees at his property Ashbourne

For sale per trailer load (price upon application)

Call Steve 0417 890 981



TRIPS CALENDAR

DATE	EVENT	CONTACT	DETAILS
12 th February	Day Trip	Tom Doody	Mystery Trip
Doody's Mystery Trip leaving from a mystery location at 9am. If you'd like to camp at the start point the night before let me know - campers and vans can be taken on the trip - no need for 4WD - you'll need to bring your drinks and lunch, we'll provide morning tea - the only other thing you'll need is a love of the unknown.....			
MONDAY 13 th February	Club Meeting 7.30pm Blackwood Football Club, Trevor Terrace, Blackwood		
Sat 11 th – Mon 13 th March – Long Weekend			
MONDAY 20 th March	Club Meeting 7.30pm Blackwood Football Club, Trevor Terrace, Blackwood		
MONDAY 10 th April	Club Meeting 7.30pm Blackwood Football Club, Trevor Terrace, Blackwood		
14 th – 17 th April – Easter *SA school hols begin			
TUESDAY 25 th April – Anzac Day (Take the Monday off and make an extra long weekend out of it!)			
29 th April – 20 th May	Extended trip	Paul & Kay Martin	Red Centre
Uluru, Kings Canyon, East/West MacDonnell Ranges			



2017 SA SCHOOL HOLIDAYS

Period	Start
Term 1	Monday 30 January, 2017
School Holidays	Friday 14 April, 2017
Term 2	Monday 1 May, 2017
School Holidays	Saturday 8 July, 2017
Term 3	Monday 24 July, 2017
School Holidays	Saturday 30 September, 2017
Term 4	Monday 16 October, 2017
School Holidays	Saturday 16 December, 2017

SA PUBLIC HOLIDAYS 2017

- Monday 13 March - March Public Holiday
- Friday 14 April - Good Friday
- Saturday 15 April - Easter Saturday
- Monday 17 April - Easter Monday
- Tuesday 25 April - ANZAC Day
- Monday 12 June - Queen's Birthday / Volunteer Day
- Monday 2 October - Labour Day
- Sunday 24 December - Christmas Eve
- Monday 25 December - Christmas Day
- Tuesday 26 December - Boxing Day / Proclamation Day
- Sunday 31 December - New Year's Eve

GUEST SPEAKER

February Guest Speaker:

Driver Training Unit 4WDSA



For further information or to book a guest speaker, please email Gary Light, Guest Speaker Co-Ordinator & Vice President at vp@mountloftyrangers.com.au

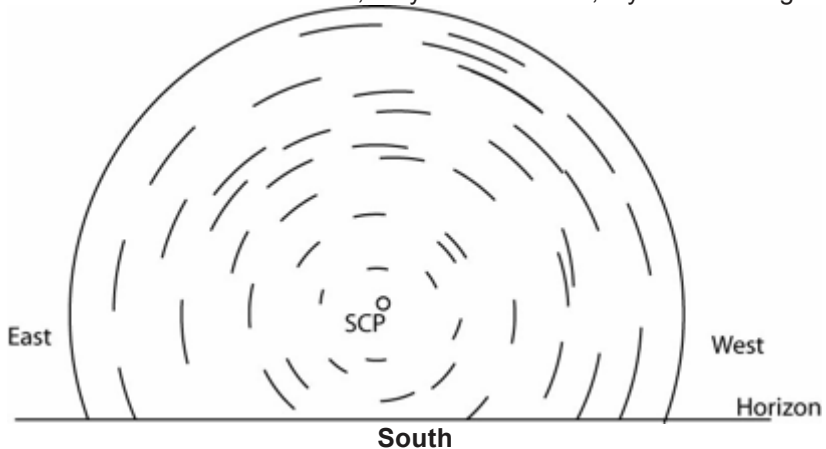
SOUTHERN CROSS

While out night driving on Saturday night at Beachport, we stopped on a hill and looked at the stars – the ensuing conversation was How do you find South from the Southern Cross:

Using the Southern Cross to find south

Background information

One of the things that make finding stars and constellations difficult is that the stars seem to move slowly across the sky during the night, rising in the east and setting in the west, just like the Sun during the day. From southern Australia, if you watch the stars for a few hours, they move like this, if you are facing south:



Some stars travel in a large arc across the sky, then disappear below the horizon. Other stars never 'set' below the horizon but trace a circle in the sky. At the centre of these circles is a point called the South Celestial Pole. This part of the sky is directly above the South Pole of the Earth. That is, if you stood at the South Pole, the South Celestial Pole would be directly overhead.

In the Northern Hemisphere, a star called Polaris or the Pole Star marks the North Celestial Pole. There is no star near the South Celestial Pole, so instead, southerners must use the Southern Cross to find South.

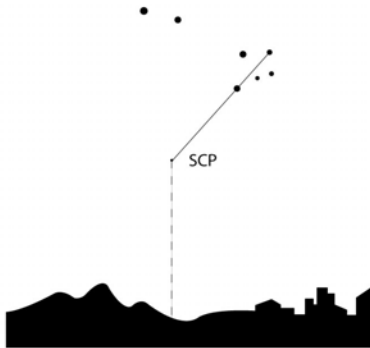
Once you are familiar with finding the Southern Cross, it can be used to work out the direction of south at any time of night and at any time in the year. This is because the Southern Cross never sets when viewed from the southern part of Australia.

SOUTHERN CROSS

What to do

To find south:

1. Find the Southern Cross.
2. Draw an imaginary line through the long axis of the Southern Cross beginning with the star that marks the top of the cross. (Note: during summer, the Southern Cross is low in the sky and therefore upside-down).
3. Extend the line four and a half times the length of the cross.
4. This will bring you to the point in the sky called the South Celestial Pole.
5. From this point, drop a line vertically down to the horizon. This gives you the direction of true south. Compasses find magnetic north/south, not true north/south – a compass needle will show magnetic south to be 11° west of true south when measured from Victoria.



Alternative method of finding south:

This method involves using the two bright Pointer stars (Alpha Centauri and Beta Centauri) that lie near the Southern Cross in the constellation of Centaurus.

- After step 2 above, draw a perpendicular bisector between the two Pointers, that is, a line starting at the mid-point between the two Pointers and coming out at right angles. This line should cross the line you drew in step 2.
- The intersection of these two lines is close to the South Celestial Pole.

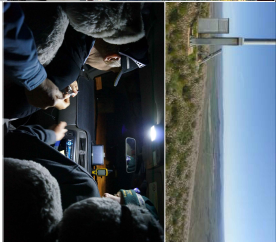
<https://museumvictoria.com.au/media/1876/using-the-southern-cross-to-find-south.pdf>

<https://maas.museum/observations/2013/01/23/finding-south-using-the-southern-cross/>

Mount Lofty Rangers 4wd Club



Present



4WD Octoberfest

FRIDAY 29TH SEPT TO MONDAY 2ND OCT 2017

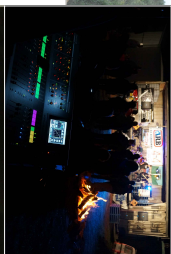
BASED AT WILLANGI BUSH ESCAPES - PETERBOROUGH

WHAT'S NEW THIS TIME YOU ASK?

MULTIPLE 4WD CLUB LEADERSHIP
NEW PROPERTIES
NEW TRACKS
ADDITIONAL ACTIVITIES

COME AND JOIN THE FUN!!!!!!!!!!!!

DETAILS TO FOLLOW IN EARLY IN 2017



OCTOBERFEST 2017

It's that time of year and we need to get cracking on Octoberfest 2017 planning.

Paul has already had some initial discussions in regards to other club assistance, new properties and sponsorship proposals.

If you are interested in helping out please do not hesitate to let Paul know on treasurer@mountloftyrangers.com.au or 0408 900 889.

2017 OCTOBERFEST TRIPS

DATE	EVENT	CONTACT	DETAILS
August	Firewood collection	Paul McGregor	Camp at Willangi Bush Escapes. Chop and collect firewood for Octoberfest. Drive some tracks
September	Reccie weekend	Paul McGregor	Reccie weekend 4WD Octoberfest tracks
29 th September – 2 nd October	OCTOBERFEST	Paul McGregor	Long weekend Event





K. I. T.
"KEEPING IN
TOUCH"

Number 45
15/12/2016

NGARKAT CONSERVATION PARK
INTERCLUB WORKING BEE 25th & 26th March 2017

WHAT: Each year a group of volunteers from FWDSA affiliated clubs meet at the Ngarkat CP to undertake a number of tasks that have been developed in conjunction with the Senior Ranger, Natural Resources (SA Murray-Darling Basin, DEWNR) from Lamerloo. These tasks assist DEWNR in maintaining, sustaining and enhancing the Ngarkat CP for all park visitors. This year the work to be undertaken is again generally on or near the one-way and two-way section of the Ngarkat CP Border Track and includes trail marking, track matting, fencing (repair, replacement or installation), fireplace & rubbish clean-up, signage, vegetation trimming, painting and rubble placement. DEWNR will be providing materials and specialist tools needed for the work and the volunteers will need to provide all the basic hand tools and labour.

The one-way section of the Border Track is closed to public traffic until the first weekend of April and therefore will be closed to public traffic during the working bee.

Cox's Windmill Campground "Official" Opening

DEWNR is recognising the efforts of 4WDSA volunteers by providing a BBQ dinner, salad & drinks to the weekend's volunteers at the "official" opening of the new Cox's Windmill campground on the Saturday evening of the working bee.

WHEN: Weekend of 25th & 26th March 2017. Work starts at 9am on the Saturday, but you may setup camp on the afternoon or evening of the preceding Friday.

WHERE: Meet at the Ngarkat CP Pine Hut Soak campground (S35° 25' 24.7" E140° 52' 46.2"). See map. Overflow if necessary to nearby Nanam Well/Cox's Windmill campgrounds.

Directions: Heading south from Taillem Bend cross the railway overpass, turn left onto the Mallee Highway; drive through Lamerloo, Parilla and past the T-Junction to Bordertown (do not turn), then after ~1.9km turn right on to Rosy Pine Road (Ngarkat Park sign at this point), continue south for ~14.7 km to the Park Entrance (there may be one or two gates near the end of this road). 250m on from the Park Entrance is the visitor information shelter and a further 70m is the turn left to the adjacent Pine Hut Soak campground.

WHAT TO BRING:

Camping: Camper trailers and caravans can be accommodated. The Pine Hut Soak campground has one long drop toilet but you need to bring everything else (water, food, shelter). Please note that the working bee dates will still be in fire danger season so the "camp fire" will need to be artificial (a gas stove will be OK).

Equipment:

Tools Post hole digging tools, pruners, loppers, bow saw, handsaw, shovel, rake, hand tools, battery powered electric drill / angle grinder with a range of drill sizes and spade bits.

UHF In car and handheld UHF radios will be useful; Channel 16 will be used initially.

Personal Working gloves and footwear, drinking water, sun protection (hat, long sleeves, long pants, and sunscreen). Bring high visibility vests or clothing and possibly share them with your fellow workers.

CONTACT:

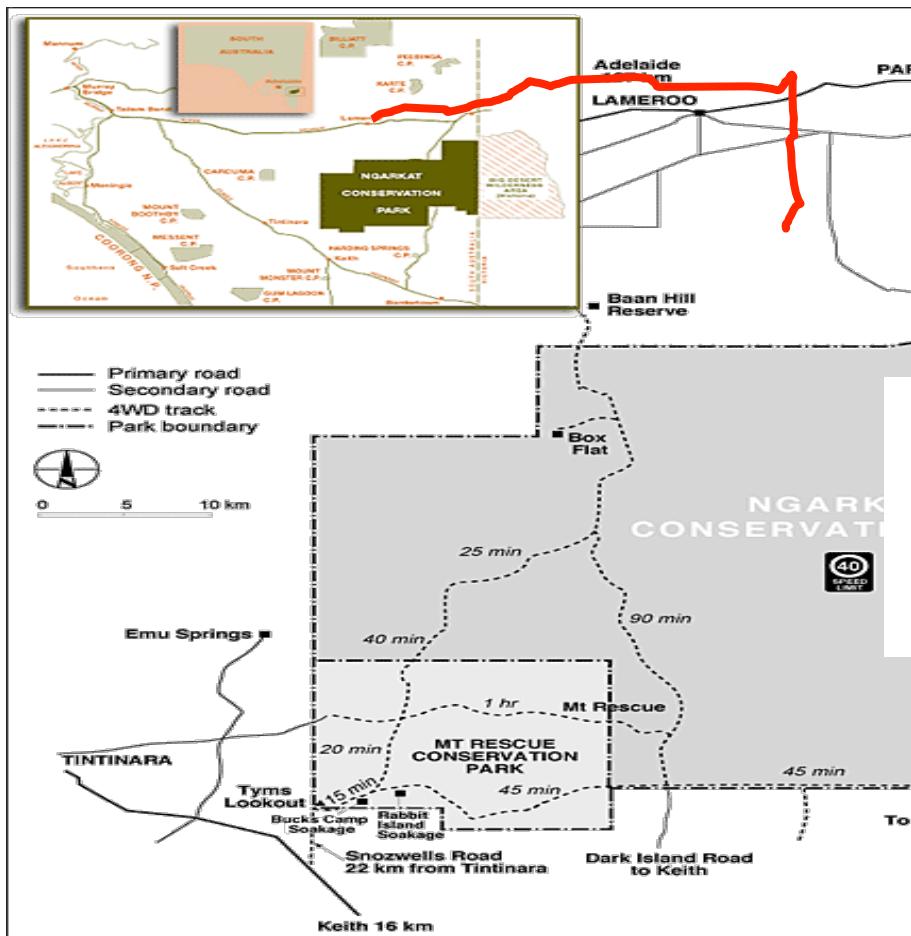
Darryl McManus - e-mail ddaajmcm@bigpond.net.au, Mb. 0488 275 300

Satellite phone: 0424 212 534 for Emergency incoming & outgoing calls during the working bee.

Important Note - let us know in advance:

- Contact details for your group.
- When you plan to arrive.
- The number of people and vehicles in your party.
- If you can bring a trailer that could be used to transport materials from the campground.

Ngarkat Conservation Park



Take charge with REDARC

REDARC's range of products ensures that you'll always be ready to go... wherever you are!

The Smart Start SBI ensures you'll never have a flat battery



The REDARC Smart Start® SBI is a microprocessor-controlled battery isolator designed for use as a solenoid priority system in multi-battery applications. It protects the start battery from excessive discharge, whilst allowing the auxiliary battery to supply non-essential loads. It's Australia's most trusted dual battery isolator, used by 4WD clubs throughout Australia.

Dual battery chargers made especially for Australia



REDARC's BCDC In-vehicle Battery Chargers feature technology designed to charge batteries to 100%, regardless of their type or size. By providing a unique charging profile to each specific battery type, the BCDC is able to achieve and maintain an optimal charge in auxiliary batteries... at all times.

Battery Management Systems for a complete solution



REDARC's Battery Management Systems, featuring the new Manager30, are state-of-the-art systems designed to charge and maintain auxiliary batteries used in recreational automotive and marine applications. They incorporate AC, DC and solar inputs to achieve the best possible charge.

For a complete list of products and technical information call 08 8322 4848 or visit redarc.com.au



AUSTRALIAN
BUSINESS
AWARDS
2011 NATIONAL WINNER

THE POWER OF

REDARC



508

<https://www.facebook.com/RedarcElectronics/>



Bruce's Meat specialising in local pasture grazed beef, local first cross lamb from the Strathalbyn area and our pork is all female from the Adelaide Hills through too Two Wells in the north. We make all our own smallgoods, ham, bacon, fritz and have over 20 flavours in our award winning range of sausages.

Going away on a 4WD trip to remote areas then come and see us first we vacuum seal your meat at no extra charge giving you up to 4 weeks shelf life in your fridge, no need to freeze it.

Poultry Options is Adelaide's only 100% free range fresh poultry shop. Exclusively stocking Lilydale Free Range Chicken, even our award winning chicken sausages and value added meal options are all made with Lilydale Chicken.

4 Great Locations

- Mitcham Square Shopping Centre
- Pasadena Green Shopping Centre
- Fairview Green Shopping Centre
- The Avenues – St Peters

FROM THE EDITOR

Don't forget to send me your piccies
and trip report for the magazine!

Cheers Kylie

magazine@mountloftyrangers.com.au

