



Rangers' Review

Volume 23

No. 2

Mount Lofty Rangers Inc.
PO Box 1150, Blackwood SA 5051
www.mountloftyrangers.com.au

August
2017



"If I have 5 bottles in one hand and
6 in the other hand, what do I have?"
"A drinking problem."



In this issue:

Prez Sez	3	
Trip report: Big Desert	6	
Merchandise	10	
Trip report: Big Desert (take 2)	16	
New club awards	20	
Guest Speaker	22	
		Trip report: Camp cook 24
		Trip Calendar 26
		Training 28
		Octoberfest 30

Mount Lofty Rangers Inc.

About Us

The Club's aim is for its members to enjoy all aspects of owning and using our 4WDs while enjoying the diverse surroundings offered by this great country. We are a club of 4WD enthusiasts who enjoy challenging driving, regular trips, camping, camp cooking and a great social scene on and off track.

Membership

Membership is open to anyone who owns a 4WD (regardless of its make or model) and has a passion for driving. Mount Lofty Rangers Inc is an affiliated member of the South Australian Association of Four Wheel Drive Clubs (FWDSA).

Club Outings

The Mount Lofty Rangers provides regular day, weekend and extended four wheel drive trips, lead by experienced trip leaders. Trips are rated on the level of difficulty and are available to all members and guests.

The club has a dedicated social committee which also organises regular events that complement the club trips.

Experience and Training

Our current members possess a wide range of skills ranging from beginner to advanced. The club has a number of accredited instructors and assessors, and is involved in regular training via the SAAFWDC Driver Training Unit.

Meetings

Club meetings are the second Monday of each month* and are held at the **Blackwood Football Club, Trevor Terrace, Blackwood**

Time: 7:15 pm for 7.30pm start

*Except where this Monday falls on a long weekend then the meeting is held on the third Monday of the month.

For more information on the Club please check out our website at:

www.mountloftyrangers.com.au

MT LOFTY RANGERS UHF CLUB CHANNEL NO 27



Prez Sez

By crikey it is COLD BRRRRRRRRRRRRRRRRRR!

After sweating my backside off for the last two and a bit weeks in Nepal, it is definitely a shock coming back to the deep dark depths of winter. With no air conditioning, no fans and no insulation in the house I was staying in, to say it was a little warm in the evenings to try to sleep is an understatement – sorry about the mental image, but I was sleeping on top of the bed only in my jocks and the sweat was pouring out of me, although 5 of the 9 nights we had a monsoonal storm just after midnight which created relief for a short time until all the windows were closed and my room took all of 30 seconds to become a sweatbox again! So how was Nepal this time? Different, I guess but in a good way, I suppose I wasn't as anxious or worried as to what I'd find or have to do, this time I ran the Learning Centre by myself from Sunday night when I got there until the following Monday morning when I headed back to Kathmandu to catch up again with Tanya.

A huge thanks to the members that donated, the money we raised will go a long way to completing the Learning Centre.....



Thanks to those on the committee that took on extra responsibility while I was gone, many hands make light work.

Having been laid low by a gastro type bug since we've been home I haven't had much chance to find out what has been going on or needs to be communicated so from memory:

1. Don't forget to register your updated membership details as per email that came out at start of the month:

Our memberships are based on a vehicle membership (family) where: **Membership is based upon a single four wheel drive vehicle, and includes both parents and children who normally reside together having the authorised and regular use of that vehicle.** Where there are more than one, four wheel drives in the family, providing only one four wheel drive vehicle attends any trip, it is a single membership BUT if more than one four wheel drive vehicles attend the same trip from the same family - this would be multiple memberships. (If unclear please give me a call)

How do you do this? It is very easy, it took me less than two minutes to fill out for my family, please follow the steps below:

- a) Open the attachment to find your membership ID number - (yellow heading)
 - b) Click on the link <https://goo.gl/forms/7xrbj01A0acvX4gk1> and fill the form out for every person associated with that membership, as per the definition above
 - we require at least one email address and mobile number per membership ID number
 - use the orange header column for the date you joined, as you can see this is not exactly totally accurate, if there is no date - your best estimate is fine
 - c) All members, visitors and guest speakers are to sign in to the club meeting on Monday night using the computer, if unsure please see Lothar or Martin.
- 2 Memberships are now due
 - 3 Get your entry in for Octoberfest – the earlybird entry fee has been extended by a week
 - 4 The date for our Christmas show is in the trips calendar – get your name on the trip sheet
 - 5 I still have some extra sites available for our Annual Beachport trip in January, if you want one, please see me ASAP

I think that's all from me at this stage, I'll hope to see you at the meeting!

YOUR COMMITTEE 2017-18

COMMITTEE DIRECTORS



PRESIDENT
Tom Doody
president@mountloftyangers.com.au

VICE PRESIDENT
Gary Light
vp@mountloftyangers.com.au



TREASURER
Paul McGregor
treasurer@mountloftyangers.com.au

SECRETARY & PUBLIC OFFICER
Jo Reed
secretary@mountloftyangers.com.au



TRIPS COORDINATOR
Trevor Light
trips@mountloftyangers.com.au

FWD SA DELEGATE
Ron Versteeg
delegate@mountloftyangers.com.au



MEMBERSHIP OFFICER
Lothar Dunaiski / Rob Stevens
membership@mountloftyangers.com.au

YOUR COMMITTEE 2017-18

COMMITTEE MEMBERS



WEBSITE OFFICER

Michelle Watkin

webmaster@mountloftyrangers.com.au



MERCHANDISE OFFICER

Sheena Dunaiski

merchandise@mountloftyrangers.com.au



PROPERTY OFFICER

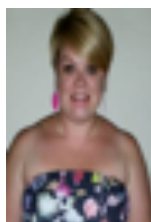
Peter Reed

property@mountloftyrangers.com.au

EDUCATION OFFICER



training@mountloftyrangers.com.au



MAGAZINE EDITOR

Kylie Cooper

magazine@mountloftyrangers.com.au



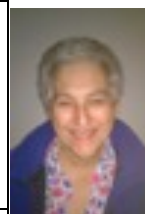
COMMITTEE MEMBER

Craig Watkin

COMMITTEE

MEMBER

Marianne Sag



COMMITTEE MEMBER

Chris Gear

COMMITTEE

MEMBER

Jason McKendrick



Trip Report

Big Desert July 2017

By Snoopy 2-2

15 cars, 14, 13, 12, 11, 10, 9, 8....D-Day...1,2...3...4,5...6,7....8 - where's 8? Anyone seen or heard from 8?...guess they're not coming.



Anyhow, great trip to the Big Desert, you should have been there.



Join us at

THE BELAIR HOTEL

Breakfast from 8am Saturday & Sunday

Seniors \$20 Lunch Special Monday - Friday

Function Spaces Available

BELAIRHOTEL.COM.AU

8278 8777 / 141 MAIN ROAD, BLACKWOOD SA

ADMIN@BELAIRHOTEL.COM.AU



4x4 ACCESSORIES

Loveday 4x4 Adventure
Park

NORTH EAST
ISUZU

Loveday Long Weekend

July 28th - 31st

\$70 per car for the weekend

Buggy and Rally
Drives and Rides



LightFORCE
PERFORMANCE LIGHTING

More info at our facebook page and website



Loveday 4x4 Adventure Park

HOPE. RECOVERY. RESILIENCE.

www.beyondblue.org.au ☎ 1300 22 4636

www.loveday4x4adventures.com



Paul McGregor – 0408 900 889

Keeping you off the beaten track

Talk to us about:

Motor Vehicle

- Agreed value options
- All accessories included
- Modifications OK
- Full off-road cover
- No claim bonus protection
- Flexible cover

Caravans and Campers

- Australia wide cover
- Agreed value options

Camping

- Theft from open air
- Fire & malicious
- Cover in vehicle and at campsites

Additional benefits

- Annual or monthly payments
- Australia wide cover
- 4WD club discounts

Call us today, quoting
'GET OFFROAD' and get
a better deal for your 4WD.



1800 633 745 | lisa.brock@ajg.com.au

[@AJG_Australia](https://twitter.com/AJG_Australia) | [in](https://www.linkedin.com/company/ajg)



Arthur J. Gallagher

MERCHANDISE

We have a new supplier for our merchandise and they have provided better guidance on measuring and choosing the best size garment for order.

How to measure: select a similar garment that fits you and lay it flat. Then measure from side seam to side seam under the armhole; this will give you the half chest measurement shown on the sizing guide.

Note the half chest measurement is the *finished garment size* not your body size

Khaki Shirt

We have new khaki shirts with the MLR logo, available for order, either short or long sleeve for \$40. Add you name for an extra \$7.



Description

180 gsm
100% cotton drill work shirts
soft and durable
UPF50+
Complies:
AS/NZ 4399:1966
AS 2919-1987

Sizing guide

Here you will find the sizing for this product

SIZE	XS	S	M	L	XL	XXL	3XL	5XL
HALF CHEST	55	57.5	60	62	64.5	67	69.5	74

Polo Shirts

Available for order in the two designs: Tyre print and Flinders print
Short sleeve \$55

Long sleeve \$58

Add your name for an extra \$5.50



MERCHANDISE

Jackets and Vests

These are still available to order

Softshell jackets - Ladies \$70; Mens \$75

Softshell vest - Ladies \$55; Mens \$60

Add you name for an extra \$7.00



POLO Sizing Chart - NEW SIZES 2016

Emmsee Sportswear

PLEASE NOTE: $\frac{1}{2}$ chest measurement is finished garment size **NOT BODY SIZE**
When measuring length start at highest point near neck / shoulder

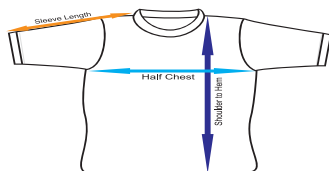
Emmsee sizes	$\frac{1}{2}$ chest	high point of shoulder	$\frac{1}{2}$ chest	
Size 6	38	53	kids	6
Size 8	40	56	kids	8
Size 10	43	58	kids	10
Size 12	44	60	ladies 8	kids 12
Size 14	47	65	ladies 10	kids 14
Size 16	49	70	ladies 12	kids 16
Size 18	53	74	ladies 14	mens S
Size 20	54	75	ladies 16	mens M
Size 22	58	76	ladies 18	mens L
Size 24	60	78	ladies 20	mens XL
Size 26	63	81	ladies 22	mens 2XL
Size 28	66	81		mens 3XL
Size 30	70	81	ladies 24	mens 4XL
Size 32	75 hip 79	81	ladies 26	mens 5XL
Size 34	79 hip 83 85			

How to measure a garment to get a half chest measurement

Lay a garment that fits you flat and measure from side seam to side seam under the armhole this will give you the half chest measurement

To measure the finished length - measure next to the neck of the garment near the highest point of the shoulder

Where to measure



Contact Sheena to place an order:

merchandise@mountloftyrangers.com.au

Club equipment for loan!

- Grate mates
- *Uniden* UHF handheld radios
- Tyre repair kit (large & small)
- *Tifor* hand winch and cable
 - Car Bra
 - Trestle tables, plastic folding 1.8m (x2)
- Recovery bag (inc snatch straps, extension strap, tree trunk protector and shackles)
- Gazebo 3m x 3m
- Hot water urn and kettle
- Bead breaker
- Drag chains (x 2)

*All club equipment is securely stored within the club trailer @ Lonsdale

For further information on any loan equipment, please email Property Officer: property@mountloftyrangers.com.au



Specialising in ;



- Aluminium windows and doors.
- Sliding, awning, double and single hung domestic windows.
- Sliding, hinged, French, multi-stack and bi-fold domestic doors.
- Full range of security doors and including "Invisi-gard" security
- Aluminium balustrading.
- Full range of aluminium commercial windows and doors.
- Window and door replacement (not glass replacement)

New homes or renovating. Club members receive **10%** discount.

Ph (08) 8268 8808 fax (08) 8347 3152 Email ron@aawindows.com.au



**Design
& Print
Copy**

197 Main Road
Blackwood SA 5051
p 08 8370 3344
f 08 8370 2800
David@bcps.net.au

All General Printing

Offset and Digital

- Business Cards
- Brochures
- Magazines
- Envelopes
- Stationery
- Dockets Books
& more

- Businesses
- Clubs and Associations
- Schools
- Government

Belair Road Auto Electrical

Proud Sponsors of the Mount Lofty Rangers Magazine

Auto Electrical 4x4 Installations
Mechanical Servicing
Brakes, Radiators & More
BOSCH Filters & Service Parts
REDARC Solar & Electrical Dealer
RAA and BOSCH Battery Dealer
Air Conditioning Repairs (AU27966)
Caravans, Camper Trailers, Motor Homes



59 Belair Road, Kingswood SA, 5062
Ph: 08 8271 7617 FAX: 08 8272 8510
E-Mail: brae59@internode.on.net

MEMBERSHIPS DUE NOW!

Your 2017/2018 membership fees are now due

\$70 for continuing member

\$80 for new or returning member

EFT payments are encouraged

For payment by EFT:

BSB: 065 132

Account No: 1004 4806

Account Name: Mount Lofty Rangers Inc.

Pay Now

*Remember to put your name in the reference field

If payment is not made by September club meeting (Monday 11th) you will be removed from club mailing list and unable to attend club trips.

Please contact Paul (the treasurer) for a confidential discussion if you require a payment plan for your membership fees.

4WD EXPERIENCE



FLY FREE

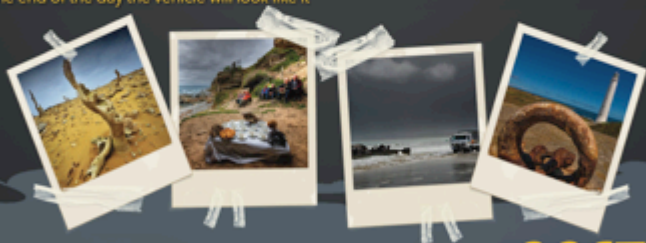
FROM MELBOURNE TO KING ISLAND RETURN

If you are a 4WD enthusiast that would like to explore the most diverse location in Australia then join us on this incredible 4 day/3 night tour in our purpose built 4WD all terrain vehicles where we will explore the hidden side of King Island in safety and comfort.

However your local guide can't guarantee he won't get you bogged over the 4 days!! You will climb the ancient dunes, travel along pristine sweeping beaches with waves lapping at the wheels, and cross rivers and creeks. At the end of the day the vehicle will look like it

has been to hell and back!! But you will have seen some of Australia's major icons. From the tallest lighthouse in the southern hemisphere to the smallest suspended lake in the world. 7000 year old calcified forest, fauna, flora, amazing scenery, the industries that drive our Island; your local guide will give you an insight into Island life.

Your hostess on board will treat you daily to culinary delights of King Island in dramatic locations - in fact, your dining experience is a part of the King Island food trail.



ITINERARY INCLUSIONS:

- Return Airfare from Melbourne to King Island - FLY FREE
- All transfers and tours
- Park entries
- 3 nights accommodation staying in Queen ensuite rooms, views overlooking Bass Strait
- 3 continental breakfasts
- 3 morning teas
- 3 hot lunches
- 3/2 course evening dinners
- All meals showcasing King Island produce

***COST PER
PERSON
\$1595***

Phone: 03 6461 1177 **Lucinda:** 0408 546 469 **Ian :** 0427 611177
kiholiday@kingisland.net.au www.kingislandholidayvillage.com.au

Special must be booked and deposited before 30 September 2017 for travel from 30 June 2017 - 31 October 2018. Conditions apply and subject to availability.

Big Desert Trip Report

14-16 July

By Gary Light

PM Friday, RV "Big Billy Bore" which is around 20 min down the Murrayville - Nhill road. It was noticeably drier compared to my 2016 trip.

Good company continued to arrive throughout the evening and we finished the night with the usual conversations around the campfire, no wind, no smoke...all was good.

Generally speaking it was good weather after a few minutes of rain late Fri afternoon. It was icy cold on Fri night, with the rain drops on canvas and cars freezing, perfect on Saturday for our touring.



After a lazy start we headed to "Dune 113" and as a good trip leader should, I released the pressure of other trip participants by being the first to be recovered for the day, getting snatched up over the warm up dune.



Then it was off to "Big Dune". My pre trip challenge was accepted and the dune was conquered not by one, but multiple vehicles this year. Well done to those who managed to get over it under their own steam (I won't mention that the first one up was Michael's emptied Jeep). Others made it close and with a quick (or not so quick) winch made it to the top and beyond and were rewarded with some great views.



After a bite to eat we proceeded to White Springs where we found a fairly iniquitous looking mud hole, it looked like setting concrete. Most decided discretion was the better part of valour and decided to give it a miss. I personally couldn't be bothered cleaning some rather smelly mud once I got home. Anyway, one lighted Jeep gave it a crack and very quickly came unstuck, or should I say stuck.



Time for to connect shackles without getting a free beauty treatment and ask future father in law for a winch out.



Meanwhile Adam had the goggles on and found some less threatening areas to play in [photo]



All good now so off to the look out which was another challenging dune with a sharp left hander up the top which was a momentum killer.



As the sun was getting low in the sky it was time to head back to camp, on the return journey we were swamped by a swarm of jeeps from the Melbourne Jeep club. Who had heard of us through our connection Jack at Wattle Ranges.

Day 2 another lazy start to the day. Canvas was dry as the wind had picked up during the night and the wind chill was noticeable.

We headed to Cactus Bore on the way saying our goodies to Lothar, Michael and Ellen.

After the bore we headed to the biggest challenge for the day "Thompsons" where we came across a bunch of Victorians trying to get up one of the dunes.

As they were leaving they were complaining how hard it was, mind you there pressures were circa 30psi, what can I say. We just punted up no problem to be blasted by the cold wind. We didn't stay long and descended via a nice ridge top track and headed to "The Gums" for some morning tea prior to completing the trip at the junction with the forests NW corner and Border Track.

After all of that I still didn't manage to get to the track I didn't do the previous year. C'est la vie, I guess I'll have to go back again next year...who wants to come?



MLR Quiet Achiever Award

The quiet achiever award is given to recognise the dedication and commitment of members who add value to the Club without fuss or bother. Often these men and women are quiet achievers who might otherwise not be recognised. No one realises the amount and quality of their work until they are acknowledged or they are away.

The Quiet Achievers Award acknowledges just how much they are valued and appreciated and recognises their important, often behind the scenes, contribution to the fabric of the Club. This is an award that is presented to those special people who go out of their way to do things for others, not because they want recognition but because it comes from their heart to give and serve others.

Eligibility

All financial members of the MLR 4x4 Club as defined by the MLR constitution.

Nomination Process

- Call for nominations will be made annually. However any member may nominate another member at any time throughout the qualifying period.
- The nomination period (per club person of the year i.e runs Feb to Jan)
- Nominations are made by submitting a nomination form outlining why the member is considered a quiet achiever with any additional achievements as outlined in the nominee criteria, in no more than one A4 page with font size not less than 10 points.
- Nominations close
- The MLR Awards Sub Committee will review the nominations and select the winner for the period.
- The winner will be announced at the annual MLR awards night.

Nominee Criteria

- Always friendly and supportive consistently helping others
- Continued fundraising efforts
- Volunteer efforts for the betterment of the Club
- Behind the scenes support

NB – there is no requirement to have lead a trip to be eligible for this award

Selection Panel

Nominations are to be forwarded to the MLR Secretary at secretary@mountloftyranglers.com.au

The MLR Awards Sub Committee will consist of the 7 MLR Directors.



NOMINATION FORM

MLR Quiet Achiever Award

NOMINEE NAME:			
NAME OF NOMINATOR:			
<i>Nominators contact details:</i>			
TELEPHONE :		EMAIL :	
MOBILE :		SIGNATURE :	

CRITERIA CITATION *(Attach one additional A4 page with font size not less than 10 points if required)*

--

Review Committee Only	
Date Received	
Review Ranking	

GUEST SPEAKER

Guest Speaker for August:

Justin from ARB



For further information or to book a guest speaker, please email Gary Light, Guest Speaker Co-Ordinator & Vice President at vp@mountloftyrangers.com.au

As a result of our July meeting where our guest speaker was Beyond Blue, people have expressed interest in providing a donation, for those interested in donating click on this link to donate to **Beyond Blue**: <https://www.beyondblue.org.au/get-involved/make-a-donation> or attend JakEm Farm in October on Jason's trip

Firelighters

What's your favourite fire starting method? It seems that teabags are most popular, or cotton balls soaked in candle wax. Preference for wax? It smells so much better than any of the other methods.

1. Save old tea bags, soak them in a jar of meth spirits (kero, diesel, citronella oil etc). One is enough to start your fire.
2. Dried gum leaves. Grab a whole pile of them then add your small kindling, then larger pieces etc in a teepee shape then light the leaves in a couple of places. The gum leaves work because of the high eucalyptus oil content.
3. Spray cans of degreaser, multi purpose, cleans things when away and also light fires.





Bruce's Meat specialising in local pasture grazed beef, local first cross lamb from the Strathalbyn area and our pork is all female from the Adelaide Hills through too Two Wells in the north. We make all our own smallgoods, ham, bacon, fritz and have over 20 flavours in our award winning range of sausages.

Going away on a 4WD trip to remote areas then come and see us first we vacuum seal your meat at no extra charge giving you up to 4 weeks shelf life in your fridge, no need to freeze it.


Poultry Options is Adelaide's only 100% free range fresh poultry shop. Exclusively stocking Lilydale Free Range Chicken, even our award winning chicken sausages and value added meal options are all made with Lilydale Chicken.

4 Great Locations

- Mitcham Square Shopping Centre
- Pasadena Green Shopping Centre
- Fairview Green Shopping Centre
- The Avenues – St Peters

Check out our how to page on our web site

WWW.brucesmeatandpoultryoptions.com

Or like us on  [brucesmeatandpoultryoptions](https://www.facebook.com/brucesmeatandpoultryoptions)

TRIP REPORT: CAMP COOK @ ASHBOURNE

MORE pictures from Steve's property!
Meet the animals



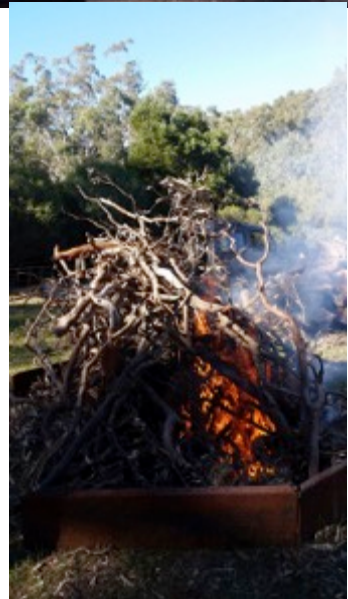
TRIP REPORT: CAMP COOK @ ASHBOURNE



Chopping and collecting dead wood



Our awesome bonfire



TRIPS CALENDAR

DATE	EVENT	CONTACT	DETAILS
4 th – 6 th August	Weekend trip	Paul McGregor	Bria Glen Park, Wonna Valley, Terowie, Mid North
<i>Meet Brian Sambell the landowner and Gawler Mayor, drive his tracks with Brian, plan an Octoberfest day trip, cut some wood and have a big camp fire and camp cook.</i>			
12 th – 13 th August	Weekend trip	Steve Townsend	Morgan Quarry
MONDAY 14 th August	Club Meeting 7.30pm Blackwood Football Club, Trevor Terrace, Blackwood		
18/19/20 August	Fishing Comp	Erik Kalderovskis	Salt Creek
19 th Aug – 3 rd Sept	Extended trip	Craig Watkin	Great Central Road Trip
<i>Alice Springs & drive the Red Centre Way. Head west to Uluru & drive to Laverton. Home via the Bight for whale watching. Permits required.</i>			
26 th – 27 th August	Reccie Weekend	Paul McGregor	Willangi
<i>Weekend reccie 4WD Octoberfest tracks</i>			
MONDAY 11 th September	Club Meeting 7.30pm Blackwood Football Club, Trevor Terrace, Blackwood		
29 th Sept – 2 nd Oct	Long weekend	Paul McGregor	OCTOBERFEST
<i>OCTOBERFEST 4WD weekend</i>			
7 th October	Day trip (and/or overnight)	Steve Brown	Yankalilla to Cape Jervis
<i>\$30 per vehicle + \$10 for lunch. Driving on farm land along coast lunch supplied by Lions Club (inc in cost). Can camp Fri & Sat night. Adventures 4WD club invited</i>			
7 th – 8 th October	Weekend trip	Steve Townsend	Peake
<i>Sand driving with Jeep club & Breakaways</i>			

TRIPS CALENDAR

MONDAY 9 th October	Club Meeting 7.30pm Blackwood Football Club, Trevor Terrace, Blackwood		
14 th October	Day trip (weekend trip)	Jason McKendrick	JakEm Farm
\$50 entry - donations to Beyond Blue *includes cost to camp for 1 night Drive tracks on property			
MONDAY 13 th November	Club Meeting 7.30pm Blackwood Football Club, Trevor Terrace, Blackwood		
Fri 25 th – Sun 26 th November	Christmas Show	Jordan Ray	Wirrina Cove Holiday Park
Stay for the weekend! Great location. Catering TBA. Nav challenge, day trips, mystery trip. How long can we make this years dinner table!!!!			
MONDAY 11 th December	Christmas Club Meeting 7.30pm Blackwood Football Club, Trevor Terrace, Blackwood		
All welcome ~ \$2 champagne for the ladies ~ Secret/Evil Santa			
MONDAY 8 th January 2018	Club Meeting 7.30pm Blackwood Football Club, Trevor Terrace, Blackwood		
Fri 26 th – 29 th January 2018	Long weekend	Tom Doody	Beachport
Day trips to Carpenters Rocks, Robe, the ICECREAM SHOP!!!! And lots more.			

*****AUSTRALIA DAY @ BEACHPORT*****

If you have booked a site you need to ring and pay your deposit.

If you still want to book a site you need to contact Tom Doody as he has 3 sites available!

Contact: Southern Ocean Tourist Park 8735 8153



TRAINING

MLR offers non-stop 4WD education from our trainers: Tom Doody & Glenn Lawson as well as the assessors: Jeff Morgan, Dave 'Shorty' Willsmore, Mark Curtis as well as Steve Townsend. Email training@mountloftyrangers.com.au for more information or to organise one-on-one or group training.

2017 DATES

MLR TRAINING

12-13 th August	Rocky undulated terrain	Morgan Quarry
7-8 th October	Sand driving & recovery	Peake (with Jeep club)

DTU TRAINING

STAY TUNED!!!

For further information on training please email
training@mountloftyrangers.com.au

2017 SA SCHOOL HOLIDAYS

Period	Start
School Holidays	Saturday 30 September, 2017
Term 4	Monday 16 October, 2017
School Holidays	Saturday 16 December, 2017

SA PUBLIC HOLIDAYS 2017

Monday 2 October -	Labour Day
Sunday 24 December -	Christmas Eve
Monday 25 December -	Christmas Day
Tuesday 26 December -	Boxing Day / Proclamation Day
Sunday 31 December -	New Year's Eve

Take charge with REDARC

REDARC's range of products ensures that you'll always be ready to go... wherever you are!

The Smart Start SBI ensures you'll never have a flat battery



The REDARC Smart Start® SBI is a microprocessor-controlled battery isolator designed for use as a solenoid priority system in multi-battery applications. It protects the start battery from excessive discharge, whilst allowing the auxiliary battery to supply non-essential loads. It's Australia's most trusted dual battery isolator, used by 4WD clubs throughout Australia.

Dual battery chargers made especially for Australia



REDARC's BCDC In-vehicle Battery Chargers feature technology designed to charge batteries to 100%, regardless of their type or size. By providing a unique charging profile to each specific battery type, the BCDC is able to achieve and maintain an optimal charge in auxiliary batteries... at all times.

Battery Management Systems for a complete solution



REDARC's Battery Management Systems, featuring the new Manager30, are state-of-the-art systems designed to charge and maintain auxiliary batteries used in recreational automotive and marine applications. They incorporate AC, DC and solar inputs to achieve the best possible charge.

For a complete list of products and technical information call 08 8322 4848 or visit redarc.com.au



AUSTRALIAN
BUSINESS
AWARDS
2011 NATIONAL WINNER

THE POWER OF

REDARC



508

<https://www.facebook.com/RedarcElectronics/>

REDARC

4WD Octoberfest

Fri 29th September to Mon 2nd October 2017

Based at Willangi Bush Escapes – Peterborough SA



NEW PROPERTIES NEW TRACKS

**ARB CAMP COOK
COMPETITION**



Strickland Road Band

ARB NIGHT DRIVE

4WDSA Big Brekky
Raising funds for RFDS

Kids movie night



Keep up to date
on our website
mountloftyrangers.com.au



2017 REDARC 4WD OCTOBERFEST UPDATE

**EARLY BIRD DISCOUNTED ENTRY EXTENDED
UNTIL MONDAY 8TH AUGUST**

ACTIVITIES

MULTIPLY DAILY TAG ALONG TOURS
NIBBLEFEST
CAMP COOK
FUNDRAISING 4WDSA BIG BREAKFAST
STRICKLAND ROAD BAND
TELL A STORY COMPETITION
SUNSET DRIVE
NIGHT NAVIGATION RUN
KIDS MOVIE NIGHT
WELCOME BAG
RAFFLE PRIZES

3 NEW 4WD DAY TRIPS INCLUDING

BRIA-GLEN TERROWIE
3 CREEK STATION
ARDEN HILLS
PLUS THE OLD FAVOURITES

MAJOR SPONSORS INCLUDING

REDARC ELECTRONICS
MOUNT BARKER 4X4 CENTRE
T VAN HIRE SA
ARB
SOUTHERN PERFORMANCE AND MICKEY THOMPSON TYRES
BLACKWOOD TYREPOWER
BRUCES MEAT AND POULTRY OPTIONS
ARTHUR J GALLAGHER INSURANCE
THE DIRT
DONALDSON FILTERS
FRANKS TOWBARS
DESIGN MC BUILDING DESIGN
FWDSA

FOR MORE DETAILS AND / OR TO PRE REGISTER CONTACT

PAUL MCGREGOR

EMAIL octoberfest@mountloftyrangers.com.au

PHONE 0408 900 889



LED LIGHT BARS

LIGHT BAR FEATURES:

- MULTI VOLT
- 3W CREE LEDs
- COLOUR TEMP 6000K
- INCLUDES PLUGS

The 18W is a great
camp area light!
Ask for a look at the
light output next
meeting

18W SPOT

175mm (L) 31mm (H) 45mm (D)



18W SPOT NORMALLY \$49.95 **SPECIAL \$40**

72W COMBO

647mm (L) 31mm (H) 45mm (D)



72W SPOT

647mm (L) 31mm (H) 45mm (D)



72W COMBO or SPOT
NORMALLY \$110 **SPECIAL \$80**

Call Tom Doody 0475 404 891 or see him at the club
meeting to get one of these super deals!
Please note there are limited numbers available at these prices

FOR SALE

JIM BEAM fibreglass cooler
\$150
Tom 0475 404 891





8186 1011

80A O'Sullivan Beach Road, Lonsdale SA 5160

Tyres & Wheels
of all types and sizes

Wheel Alignments
to all makes and models

4WD Accessories

4WD Lift Kits

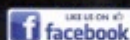
4WD Modifications

**Race / Drift Car Alignment
Setups**



Legendary Offroad Tyres

BILSTEIN



NIFFO
EXTREME PERFORMANCE

TOYO TIRES
driven to perform



8186 1011

80A O'Sullivan Beach Road, Lonsdale SA 5160

Vehicle Servicing & Repairs
Including log book services

Suspension / Steering

Brakes / Clutches

Cooling Systems

Fuel Systems

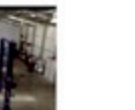
**Petrol / Diesel / Turbo
& Import Vehicles**

**Latest Electrical & Diagnostic
Equipment**

**Performance Upgrades
& Tuning**

Race / Drift Car Preparation

Engine Builds and Projects





Tyrepower

Blackwood

Specialising in -

Wheel & Tyre packages

Suspension upgrades

Vehicle Servicing

Wheel Alignments

Bull Bars and Rear Bars



KUMHO TYRE



Tyrepower Blackwood - 205 Main Road, Blackwood SA, 5051

Ph: (08) 8370 2195 W: www.tyrepowerblackwood.com.au

E: daniel@tyrepowerblackwood.com.au

Happy 4WDing & Camping!

magazine@mountloftyrangers.com.au

