



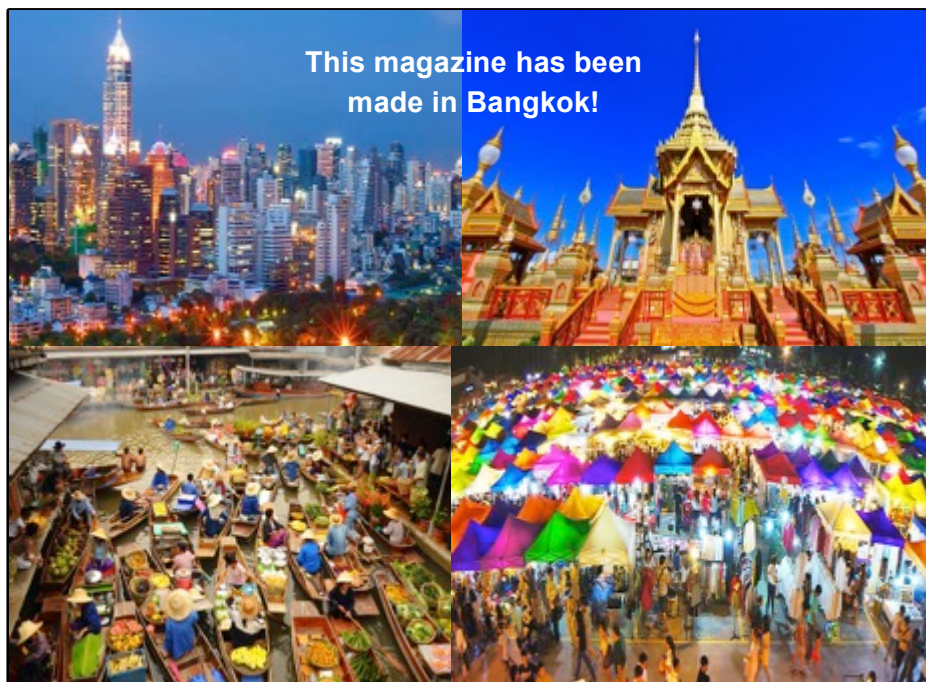
# Rangers' Review

Volume 22

No. 6

**Mount Lofty Rangers Inc.**  
PO Box 1150, Blackwood SA 5051  
[www.mountloftyrangers.com.au](http://www.mountloftyrangers.com.au)

November  
2016



This magazine has been  
made in Bangkok!

## **In this issue:**

Prez Sez	3	For sale	26
Uniform	8	Trip Report: Salt Creek	28
Trip: Living the dream	12	Photo competition	32
Trips Calendar	20	Guest Speaker	34
MLR Christmas	22	Trip Report: Peake 'Training'	36
Octoberfest	24	Hirer beware!	38
Training	26		

# **Mount Lofty Rangers Inc.**

## **About Us**

The Club's aim is for its members to enjoy all aspects of owning and using our 4WDs while enjoying the diverse surroundings offered by this great country. We are a club of 4WD enthusiasts who enjoy challenging driving, regular trips, camping, camp cooking and a great social scene on and off track.

## **Membership**

Membership is open to anyone who owns a 4WD (regardless of its make or model) and has a passion for driving. Mount Lofty Rangers Inc is an affiliated member of the South Australian Association of Four Wheel Drive Clubs (FWDSA).

## **Club Outings**

The Mount Lofty Rangers provides regular day, weekend and extended four wheel drive trips, lead by experienced trip leaders. Trips are rated on the level of difficulty and are available to all members and guests.

The club has a dedicated social committee which also organises regular events that complement the club trips.

## **Experience and Training**

Our current members possess a wide range of skills ranging from beginner to advanced. The club has a number of accredited instructors and assessors, and is involved in regular training via the SAAFWDC Driver Training Unit.

## **Meetings**

Club meetings are the second Monday of each month\* and are held at the **Blackwood Football Club, Trevor Terrace, Blackwood**

**Time: 7:15 pm for 7.30pm start**

\*Except where this Monday falls on a long weekend then the meeting is held on the third Monday of the month.

For more information on the Club please check out our website at:

[www.mountloftyrangers.com.au](http://www.mountloftyrangers.com.au)

<b>MT LOFTY RANGERS UHF CLUB CHANNEL NO 27</b>
--



# Prez Sez

Surprisingly there is not much to report this month, so I'll cheat and repeat some of last months as a reminder of what's coming up in MLR world!

I haven't even left the country yet and to say I have been made to feel very humble with the words of encouragement, the support and the donations I have received from friends, family and of course from the members of Mount Lofty Rangers 4WD Club is an understatement! I cannot thank everyone enough. As you may know the Doody family have been known to do the odd blog or two when one or all of us are travelling - and my trip to Nepal will be no different - I will endeavour to update the goings on every couple of days but this will depend on a couple of small things..... electricity and the good ole interwebs! The link to the blog will be updated on the new MLR facebook page, so send an email to [webmaster@mountloftyrangers.com.au](mailto:webmaster@mountloftyrangers.com.au) to get your facebook profile added to our page.

While talking social media of sorts, our new website is nearly ready for unveiling to the wider community. Firstly a big thankyou to Michelle for upgrading the website, I think it is sensational!!!!!! Michelle has done a great job with the new layout and the committee were very impressed at the committee meeting when they were shown it this week. Once we replace the old website, it will still be a work in progress as all "old content" has been loaded into the new format, however we are in the process of updating ALL content and working towards things like a members only section incorporating electronic trip sheets and online ordering for merchandise. So keep an eye out for an email saying that we are now live with the new website!

The MLR Christmas show is on the weekend of 26th and 27th November at Wirrina holiday park, you should find more info elsewhere in this newsletter, however you will need to book your own site (we currently have the A section unpowered booked for MLR), if you don't want unpowered there are other powered, or cabin sites available as well. I need to thank Jordan who has put his hand up to ensure everything comes together for this weekend, so please offer him whatever assistance you can to make it an enjoyable weekend for everyone. A BIG reminder to get your \$20 deposit to Paul McGregor for the meal.

Don't forget about the photo competition - details of how to enter and the categories can be found in the newsletter.

Our December club meeting as per the previous couple of years, will have a Kris Kringle theme with Evil Santa thrown in. The half price champagne will be flowing again. Please bring a wrapped gift to around the value of \$10 to place on the table. Tickets will be available to purchase at the door for you to steal someone else's present or choose one for yourself. Please bring a small plate of nibbles to share.

After Christmas has gone its time to clean up your fourby as the January club meeting we are having another show n shine, this is a great time to look at other members rigs and see what gadgets and widgets they have on their beloved fourby. There will be mystery categories to win with a mystery judge or two casting their eye over your pride and joy.

January will also see our annual Beachport Australia Day long weekend trip, the trip sheets are up as well as the trip leader sheet (for aspiring trip leaders to put your name down to lead a trip). Adventurers 4wd club have again invited us to their dinner and quiz night (Which MLR cleaned up majority of prizes this year) so there is a trip sheet for that too.....

Just a reminder that if you put your name on a trip sheet and then your situation changes, please please let the trip leader know so they are not expecting you to turn up. If you don't have the trip leader contact at least get in contact with either myself or Roger our trip coordinator [trips@mountloftyrangers.com.au](mailto:trips@mountloftyrangers.com.au) there has been another trip recently where a couple of people didn't turn up and the club has had to pay for their non attendance.

Thanks again to our VP, Gary who will be looking after things while I'm off helping the less fortunate in Nepal.

I hope you all have a very merry Christmas with your friends and family and a happy new year and if travelling, please do so safely!

See you out there somewhere, sometime in the New Year.....

# YOUR COMMITTEE 2016-17

## COMMITTEE DIRECTORS

	<p>PRESIDENT Tom Doody <a href="mailto:president@mountloftyrovers.com.au">president@mountloftyrovers.com.au</a></p>
	<p>VICE PRESIDENT Gary Light <a href="mailto:vp@mountloftyrovers.com.au">vp@mountloftyrovers.com.au</a></p>
	<p>TREASURER Paul McGregor <a href="mailto:treasurer@mountloftyrovers.com.au">treasurer@mountloftyrovers.com.au</a></p>
	<p>SECRETARY &amp; PUBLIC OFFICER Jo Reed <a href="mailto:secretary@mountloftyrovers.com.au">secretary@mountloftyrovers.com.au</a></p>
	<p>TRIPS COORDINATOR Roger Wilkinson <a href="mailto:trips@mountloftyrovers.com.au">trips@mountloftyrovers.com.au</a></p>
	<p>FWD SA DELEGATE Ron Versteeg <a href="mailto:delegate@mountloftyrovers.com.au">delegate@mountloftyrovers.com.au</a></p>
	<p>MEMBERSHIP OFFICER Jordan Ray <a href="mailto:membership@mountloftyrovers.com.au">membership@mountloftyrovers.com.au</a></p>



# YOUR COMMITTEE 2016-17

## COMMITTEE MEMBERS

	<p>WEBSITE OFFICER Michelle Watkin <a href="mailto:webmaster@mountloftyrovers.com.au">webmaster@mountloftyrovers.com.au</a></p>		
	<p>MERCHANDISE OFFICER Sheena Dunaiki <a href="mailto:merchandise@mountloftyrovers.com.au">merchandise@mountloftyrovers.com.au</a></p>		
	<p>PROPERTY OFFICER Peter Reed <a href="mailto:property@mountloftyrovers.com.au">property@mountloftyrovers.com.au</a></p>		
	<p>EDUCATION OFFICER Steve Townsend <a href="mailto:training@mountloftyrovers.com.au">training@mountloftyrovers.com.au</a></p>		
	<p>MAGAZINE EDITOR Kylie Cooper <a href="mailto:magazine@mountloftyrovers.com.au">magazine@mountloftyrovers.com.au</a></p>		
	<p>COMMITTEE MEMBER Wayne Ritchie</p>		<p>COMMITTEE MEMBER Rob Stevens</p>
	<p>COMMITTEE MEMBER Craig Watkin</p>		<p>COMMITTEE MEMBER Marianne Sag</p>
	<p>COMMITTEE MEMBER Lothar Dunaiki</p>		



Paul McGregor – 0408 900 889

## Keeping you off the beaten track

### Talk to us about:

#### Motor Vehicle

- Agreed value options
- All accessories included
- Modifications OK
- Full off-road cover
- No claim bonus protection
- Flexible cover

#### Caravans and Campers

- Australia wide cover
- Agreed value options

#### Camping

- Theft from open air
- Fire & malicious
- Cover in vehicle and at campsites

#### Additional benefits

- Annual or monthly payments
- Australia wide cover
- 4WD club discounts

Call us today, quoting  
'GET OFFROAD' and get  
a better deal for your 4WD.



1800 633 745 | [lisa.brock@ajg.com.au](mailto:lisa.brock@ajg.com.au)

[@AJG\\_Australia](https://twitter.com/AJG_Australia) | [in](https://www.linkedin.com/company/ajg/)



Arthur J. Gallagher



# Tyrepower

Blackwood

***Specialising in -***

**Wheel & Tyre packages**

**Suspension upgrades**

**Vehicle Servicing**

**Wheel Alignments**

**Bull Bars and Rear Bars**



KUMHO TYRE



Continental

**BFGoodrich**  
Tires

**TOYO TIRES**



Tyrepower Blackwood - 205 Main Road, Blackwood SA, 5051

Ph: (08) 8370 2195 W: [www.tyrepowerblackwood.com.au](http://www.tyrepowerblackwood.com.au)

E: [daniel@tyrepowerblackwood.com.au](mailto:daniel@tyrepowerblackwood.com.au)

# UNIFORM

We have a new supplier for our uniforms and they have provided better guidance on measuring and choosing the best size garment for order.

**How to measure:** select a similar garment that fits you and lay it flat. Then measure from side seam to side seam under the armhole; this will give you the half chest measurement shown on the sizing guide.

Note the half chest measurement is the *finished garment size* not your body size

## Khaki Shirt

We have new khaki shirts with the MLR logo, available for order, either short or long sleeve for \$40. Add your name for an extra \$7.



### Description

180 gsm  
100% cotton drill work shirts  
soft and durable  
UPF50+  
Complies:  
AS/NZ 4399:1966  
AS 2919-1987

### Sizing guide

Here you will find the sizing for this product

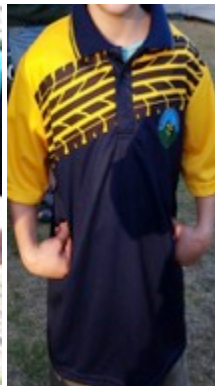
SIZE	XS	S	M	L	XL	XXL	3XL	5XL
HALF CHEST	55	57.5	60	62	64.5	67	69.5	74

## Polo Shirts

Available for order in the two designs: Tyre print and Flinders print  
Short sleeve \$55

Long sleeve \$58

Add your name for an extra \$5.50



# UNIFORM

## Jackets and Vests

These are still available to order

Softshell jackets - Ladies \$70; Mens \$75

Softshell vest - Ladies \$55; Mens \$60

Add you name for an extra \$7.00



## POLO Sizing Chart - NEW SIZES 2016

### Emmsee Sportswear

PLEASE NOTE:  $\frac{1}{2}$  chest measurement is finished garment size **NOT BODY SIZE**  
When measuring length start at highest point near neck / shoulder

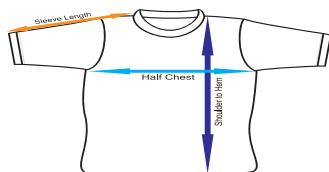
Emmsee sizes	$\frac{1}{2}$ chest	high point of shoulder		$\frac{1}{2}$ chest
Size 6	38	53		kids 6
Size 8	40	56		kids 8
Size 10	43	58		kids 10
Size 12	44	60	ladies 8	kids 12
Size 14	47	65	ladies 10	kids 14
Size 16	49	70	ladies 12	kids 16
Size 18	53	74	ladies 14	mens S
Size 20	54	75	ladies 16	mens M
Size 22	58	76	ladies 18	mens L
Size 24	60	78	ladies 20	mens XL
Size 26	63	81	ladies 22	mens 2XL
Size 28	66	81		mens 3XL
Size 30	70	81	ladies 24	mens 4XL
Size 32	75 hip 79	81	ladies 26	mens 5XL
Size 34	79 hip 83 85			

### How to measure a garment to get a half chest measurement

Lay a garment that fits you flat and measure from side seam to side seam under the armhole this will give you the half chest measurement

To measure the finished length - measure next to the neck of the garment near the highest point of the shoulder

Where to measure



Contact Sheena to place an order:

[merchandise@mountloftyrangers.com.au](mailto:merchandise@mountloftyrangers.com.au)

## **Club equipment for loan!**

- Grate mates
  - *Uniden* UHF handheld radios
  - Tyre repair kit (large & small)
  - *Tifor* hand winch and cable
    - Car Bra
    - Trestle tables, plastic folding 1.8m (x2)
  - Recovery bag (inc snatch straps, extension strap, tree trunk protector and shackles)
- Gazebo 3m x 3m
  - Hot water urn and kettle
    - Bead breaker
  - Drag chains (x 2)

**\*All club equipment is securely stored within the club trailer @ Lonsdale**

**For further information on any loan equipment, please email Property Officer: [property@mountloftyrangers.com.au](mailto:property@mountloftyrangers.com.au)**



### **Specialising in ;**



- Aluminium windows and doors.
- Sliding, awning, double and single hung domestic windows.
- Sliding, hinged, French, multi-stack and bi-fold domestic doors.
- Full range of security doors and including "Invisi-gard" security
- Aluminium balustrading.
- Full range of aluminium commercial windows and doors.
- Window and door replacement (not glass replacement)

**New homes or renovating. Club members receive 10% discount.**

**Ph (08) 8268 8808 fax (08) 8347 3152 Email [ron@aawindows.com.au](mailto:ron@aawindows.com.au)**



## DID YOU KNOW??



⚠ The headrest of car seats is deliberately kept detachable and sharp so that it could be used to break open the glass of car in case of fire and emergency. The car's glass too are kept easily breakable from inside. Very few people know about it and thus can't save themselves in case of emergencies. Please share it with as many possible and educate.

---

# LIVING THE DREAM

**Courtesy of Trish & Robert Dagri**

Yep, there's a lot of travellers out there doing exactly that – "Living the Dream". We discovered this during our 2 month trip in the Prado and camper trailer. We set our sights on The Kimberly but firstly we travelled to Darwin with 2 friends and stayed with them at the Tumbling Waters Caravan Park some 60 kms out of Darwin and departed after 10 days. Of course no trip into the Kimberley is complete without a visit to Lake Argyle, but the resort was booked out 7 days in advance so we booked into the caravan park at Kunnunurra.

Kunnunurra has definitely become more touristy but essentially it has managed to keep that Outback feel. There's plenty of attractions on offer in Kunnunurra, one of the major ones is the Mirima National Park. This is a stunning place with rock formations that you swear are a miniature version of the Bungle Bungles. We did a self-drive tour to Wyndham and visited the spectacular view of the 5 rivers.

We booked a full day tour out of Kunnunurra which was travelling 55km up the Ord River finishing at the Dam Wall at Lake Argyle. Transferred to another tour boat to do the Lake Argyle sunset cruise. This lake is massive, it makes Sydney Harbour look like a fish bowl, as it is some 35 times larger than Sydney Harbour. All sides of the lake are bordered by red rocky hills and then contrasted with the deep blue of the lake. They say the best view of Lake Argyle is from the infinity pool in the resort!

## **ORD RIVER**

The very reason we wanted to visit The Kimberly was to drive the Gibb River Road, it's the trek itself that is the greatest attraction, however, this road demands great respect and thorough preparation. Prepare well and you're in for a treat. You can expect spectacular gorges, ranges, waterfalls, swimming holes and abundant wildlife.



It seems The Kimberly is on everyone's bucket list, and because it's so popular you can expect crowds during peak periods as this place gets flooded with tourists. We met so many people who are travelling around this beautiful country with an indefinite "return home" date. Others have chucked in their jobs for one year and have hit the road with their kids, some with babies and toddlers, touring around in camper trailers, vans and some in tents.

# LIVING THE DREAM

## ZEBEDEE SPRINGS

Kunnunurra locals had mentioned that the road was good in some sections and poor in others. On the drive to El Questro we visited Emma Gorge which was absolutely spectacular. The road into El Questro was very corrugated but the Pentecost River crossing wasn't a problem at all, the flow was pretty low due to 2 dry wet seasons previously.



Spent 2 days camping there, soaked in Zebedee Springs, hiked to El Questro gorge and swam in Moonshine Gorge. We crossed Moonshine Creek to get to the gorge, this was deeper than the Pentecost.

We departed, aired the tyres down to the appropriate pressure and hooray we were finally on the Gibb River Road – 660km of dirt ahead! To our delight the road was smooth as silk, as the grader had been through very recently, but this ended after 10km. We'd heard so much about Home Valley Station so called in for a look – wow what a beautiful set up, swimming pool and all. We stayed for a short while, had a coffee break, they even offered us a swim in the pool as we could start to feel the heat of the day. Our next destination was Ellenbrae Station, some 150kms down the road. The road turned from smooth to very corrugated and stony. Rob was concentrating hard to dodge the stones jutting out of the surface, but the rule of this road, and many others is to drive to the conditions, which we did. We were down to 40km/hour in some sections and up to 80km/hour for short spurts. Had a rest half way through, had a quick check and I noticed a small chunk of rubber had lifted from one of the Prado rear tyres, but this was nothing serious.

Ellenbrae Station was another unique camp, with donkey heater for hot showers to wash off all that red dust and cattle roaming through. 34C during the day with cool nights, a big gathering of campers around the campfire that evening. The word was out, if you are heading for Mitchell Falls, expect a very rough ride from Drysdale River Station onwards, oh dear, what might that be like? Our fridge was starting to fail, showing a temperature of 30C but freezing inside, all our fresh salad turned into a soggy mess and was tossed. A return trip to Drysdale Station and Mitchell Falls required 5 days, the road conditions and the fridge dilemma made us cross this off the agenda.

We turned the fridge on for short spurts, then off, kept all our meat frozen, wow Rob's beer was icy!

## LIVING THE DREAM

Moving on, we headed for Mt Barnett, a roadhouse where you can purchase diesel at \$2.25 per litre and purchase food if you're desperate. Kunnunurra's supply of eggs had run out, so I purchased a dozen at Mt Barnett for \$8.00! Bag of ice \$11.00! Hell it was damn hot and I needed ice in my Sav Blanc. At Mt Barnett we explored the gorges and rock pools of Manning Gorge. The billabong was only 300m from our campsite, oh what bliss swimming in this crystal clear water with sand base, really gave us relief from the heat of the day. It seems every time we had to set up our camp, it was blistering hot. The gorge itself was a 1.5 hour (one way) pretty hefty hike, but it was well worth it. We were rewarded with beautiful falls. A swim in the deep blue gorge was a must. Upon our return to camp it felt like we'd done a severe 3 hour step class, we were hot and bothered and my hips and knees were so sore. Yep, another swim in the billabong helped. We were so chilled out and loving this lifestyle we didn't know what day it was or the date. Booked in to Broome before we evacuated.



**MANNING GORGE**



**MT BARNETT CAMPGROUND**

Back on the Gibb River Road again, yes, corrugations - the stunning scenery did help to take our mind of these. We called in at Galvan's Gorge, luckily a short walk to this one. I was still sore from the trek the day before. Much smaller than Manning, but every gorge seems to be equally "picture perfect". To our delight we viewed some aboriginal paintings here.

**BELLS GORGE**

A "must see" is Bells Gorge, we were advised not to miss it. Headed for Silent Grove, a lovely campground with hot solar showers and flushing toilets. As soon as we set up camp we drove to the gorge itself. A pretty rough road in, but only 1km walk in. Unbelievable, yet another spectacular place, with waterfalls.



# LIVING THE DREAM

The car had a rattle which Rob wasn't happy about. The roof rack has loosened on one side and the bash plates under the car, well, they'd been bashed alright. He re-drilled new bolt holes and fixed them nice and tight. The evening was wonderful, such clear night skies, you could see the milky way from one end of the universe to the other.

On the road again, now heading for Windjana Gorge. We passed through Imitji Roadhouse, another place stocked with fuel, supplies and dodgy old spare tyres if needed. You'd probably pay anything out here if you had to! Is that a rattling chain we can hear? Quick stop to check, shackle pin had rattled loose, good old electrical ties fixed that problem. The traffic to Windjana had been very busy, 20kms of deep corrugations all the way. All we could do was stick to one speed and go for it.

Windjana was quite an open campground, we managed to find a tree to camp under. This gorge had an impressive gorge wall, the rocks looked like organ tubes and the gorge itself was a short stroll from camp. Orange banded gorge walls towering up from a sandy riverbed, rock pools crowded with fresh water crocodiles. We counted 40 in one area. Yet another amazing place. Our plan was to view Tunnel Creek which was 20 kms from Windjana (40kms return trip). We'd heard from fellow campers the road was very bad so we crossed that off the list for now and do that from the blacktop when we head for Fitzroy Crossing.

The corrugations gave way to bitumen just short of Derby and this marked the end of the Gibb River Road. We were elated to feel the bitumen road beneath us, but sad to see the red dusty road leave our view behind. We stopped in Derby just long enough to marvel at the massive height of the jetty. Enjoyed a big feed of barra and chips and purchased a new shackle at Mitre 10. Found a great freebie roadside stop about 110km from Broome, camped there overnight with many others!

Paradise found, we stayed in Broome for 7 nights, an interesting town with lots of charm. First thing we took the fridge in for repairs, new thermistor needed, a common problem for our model we were told, washed off the dust of the Gibb River Road. Your first drive along Cable Beach and viewing the sunset you will remember forever!

# LIVING THE DREAM

We booked a full day tour which took us to the Horizontal Falls then a 4WD tour from Cape Le Veque to Broome. This was an expensive trip, only accessible by air or boat. Definitely a must see – the awe of this magnificent place is hard to put into words, you need to view it with your own eyes. What a way to spend our last day in Broome. Great to have the fridge in good working order again.

## HORIZONTAL FALLS



Now on the black top, destination Tunnel Creek. Our plan was to view Tunnel Creek and stop at a freebie campsite which was an old RAAF quarry. We couldn't locate the campsite, due to lack of signage, the road in was so good, it had been graded 2 weeks earlier so we headed all the way to Windjana Gorge and camped there again. OMG we're almost back on the Gibb River Road yet again! Decided to view Tunnel Creek on our departure – yet another unique place. We did find the RAAF quarry after all, pretty good camp spot, plenty of room. Fuelled up in Fitzroy Crossing – Fitzroy River enormous but very dry. Stopped overnight in another freebie called Mary Pool, the other side of Mary River. Jam packed with caravaners and anything else that resembled camping. Called in to Halls Creek to sort out mobile phone troubles. All fixed, had a look around and headed for Spring Creek.

## WINDJANA GORGE

Spring Creek is yet another freebie stop only 500 metres to the turn off to the Bungle Bungles. We're loving these freebies! The rumour here was "man it's a rough drive into the Bungles". The not so sure travellers booked a tour instead. Next morning we pressured the tyres down and set off. They were damn right it was rough, speed of 20km – 40km hour, heavily corrugated road, but I might add it was quite an interesting drive as there were creek crossings to encounter and also hills and bends. 78kms took us 2.5 hours. Cathedral Gorge and Echidna Chasm are the main attractions. It wasn't a real lengthy walk to the Gorge but the heat of the day was really setting in, it felt like 40C, we probably should have set out earlier. Cathedral Gorge is where they did the





# LIVING THE DREAM

Qantas advertisement. The amphitheatre is huge, the rock formations rise up some 300m. This was the more outstanding section to visit. Fantastic views of the many bee hive rock formations, the colours were just beautiful. Slow drive back to camp. Collected wood for a campfire, chatted to a couple from Queensland who'd been travelling for some 13 months, absolutely loving it, but, they had a fancy caravan they called home! Spring Creek was so lovely I could have stayed another night, didn't, but maybe should have.

## **EDITH FALLS**

Stayed one night and headed to Katherine to see if we could get into Edith Falls. Visited the information centre, you cannot book a site at the Edith Falls campground, so we took our chances and managed to get the second to last camp site on offer – no power here, that didn't bother us. We'd heard of the nasty weather back home, we were still enjoying 34C, sunny blue skies every day, and had for the last 6 weeks.



The plan was to return on the Tanami via Wolfe Creek, we had time on our hands, so we headed back to Kunnunurra and stayed in the warmth, washing everything, replenishing supplies and just relaxing. We were reluctant to give up our life on the road just yet. After a 3 day stay in Kunnunurra we headed for Big Horse Campground, 10kms from Timber Creek. This was jam packed when we set out, the traffic had thinned out considerably, there were plenty of choices this time round.

They just keep happening, another must see place! Delightful campground with yes, green grass, what a luxury. The falls themselves fill out to a massive pool the size of a reservoir, great for swimming. You can hike up to the upper pools and swim there too. Walking track is pretty easy to manoeuvre across with magnificent views along the way. We stayed for 3 days, loved it so much, but our amazing trip was ending. We stretched it out even further and headed for Mataranka Homestead and stayed there for 3 days also. It was tempting to do a left turn at the Three Ways and head for Queensland!

The humidity was starting to creep in early, you could really feel it in the air, it was time to head south again. We stayed at Banka Banka, a cattle station who welcome us travellers with open arms. A great set up here, can thoroughly recommend it as a stop from Katherine to Alice Springs. Next day we arrived in Alice, a very grey bleak day, rain and freezing cold as usual.

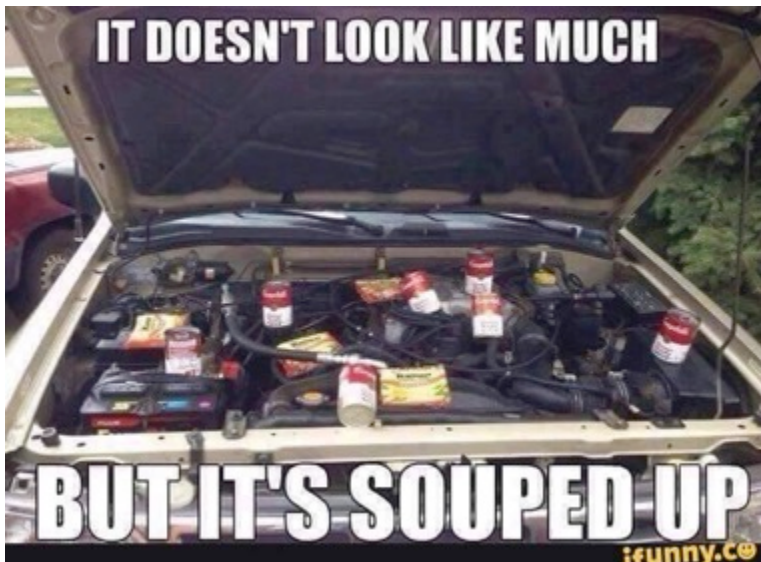
## LIVING THE DREAM

Headed for Coober Pedy, stayed 2 nights and had a look at the Breakaways, did a museum tour which was interesting.

We did 11,453kms in total. 27 full campsite set up/pack ups which then totalled 54 open/closes to the camper.

Glad we didn't visit all the intended locations, it gives us a good excuse to go back and do it all again.

---





**Design  
& Print  
Copy**

197 Main Road  
Blackwood SA 5051  
p 08 8370 3344  
f 08 8370 2800  
David@bcps.net.au

## All General Printing

### Offset and Digital

- Business Cards
  - Brochures
  - Magazines
  - Envelopes
  - Stationery
  - Dockets Books  
& more
- 
- Businesses
  - Clubs and Associations
  - Schools
  - Government

## Belair Road Auto Electrical

*Proud Sponsors of the Mount Lofty Rangers Magazine*

Auto Electrical 4x4 Installations  
Mechanical Servicing  
Brakes, Radiators & More  
BOSCH Filters & Service Parts  
REDARC Solar & Electrical Dealer  
RAA and BOSCH Battery Dealer  
Air Conditioning Repairs (AU27966)  
Caravans, Camper Trailers, Motor Homes



59 Belair Road, Kingswood SA, 5062  
Ph: 08 8271 7617 FAX: 08 8272 8510  
E-Mail: brae59@internode.on.net

# TRIPS CALENDAR

DATE	EVENT	CONTACT	DETAILS
MONDAY 14 <sup>th</sup> November	Club Meeting 7.30pm Blackwood Football Club, Trevor Terrace, Blackwood		
16 <sup>th</sup> November	Club night 6-8pm	Gary Light	Snowy's & BBQ
After hours access to Snowy's including sausage sizzle & discount shopping			
<div></div>			
26 <sup>th</sup> – 27 <sup>th</sup> November	Christmas Show	Jordan Ray	Wirrina Cove Resort
Fun for all the family! Activities planned! Bush walks & wine drinking!			
			
MONDAY 12 <sup>th</sup> December	Christmas Club Meeting 7.30pm Blackwood Football Club, Trevor Terrace, Blackwood		
Social evening * All welcome * Kris Kringle versus Evil Santa * Fruffle sales * \$2 Champagne			
<div></div>			
**PLEASE BRING A \$10-15 WRAPPED GIFT – RAFFLE TICKETS \$2 AT THE DOOR			

<b>2017</b> MONDAY 12 <sup>th</sup> January	Show 'n' Shine Club Meeting 7.30pm Blackwood Football Club, Trevor Terrace, Blackwood		
<i>Show your wares! Categories to be announced! Prizes to win!</i>			
			
Thurs 26 <sup>th</sup> – Sun 29 <sup>th</sup> January	Extended long weekend	???	Australia Day @ Beachport
<i>Sand &amp; dune driving / ladies trip / ice cream / wine tasting / quiz night and more!</i>			
			

## 2016 SA SCHOOL HOLIDAYS

Period	Start
School Holidays	Saturday 17 December, 2016

## 2017 SA SCHOOL HOLIDAYS

Period	Start
Term 1	Monday 30 January, 2017
School Holidays	Friday 14 April, 2017
Term 2	Monday 1 May, 2017
School Holidays	Saturday 8 July, 2017
Term 3	Monday 24 July, 2017
School Holidays	Saturday 30 September, 2017
Term 4	Monday 16 October, 2017
School Holidays	Saturday 16 December, 2017



# MLR CHRISTMAS SHOW



**Book by phone: 8598 3125**

**\$25 per site (20% discount to be applied upon booking)**

(2 x Adults and up to 2 x Children, with a total max. of 6 people/site (Children - 15yo and below, Adult - 16yo and older). Additional Adults are \$10/night and additional children are \$5/night)

Wirrina Cove Holiday Park is located on Paradise Drive at Wirrina Cove, South Australia 5204 (8 minutes South of Normanville towards Kangaroo Island).



**MLR – Area A**

**HOT/WET WEATHER**

Shearing shed available

**MENU**

**Meat on a spit  
Salad / veges  
Dessert TBA**

**Entrance**

**\*\*\* \$20 refundable deposit to be paid per membership to the Treasurer by November meeting to assist with catering requirements  
Rangers Review**



**PLACE YOUR FRUFFLES ORDERS EARLY!** Pre-orders can be made to Kylie or Frank at November meeting for collection at December meeting. Small amounts will be available to purchase at December meeting from Debbie.



fruffles

"Fruit Truffles" Individually handmade with a selection of dried fruits & a hint of honey

### ORDER FORM

**Phone: 0403 433 026**

**Fax: 8321 9765**

#### 1 Doz Loose Chocolates @ \$14.00 each

Qty Req. \_\_\_\_\_ Milk / Dark / Mixed Total \$ \_\_\_\_\_

#### Loose Chocolates @ \$1.00 each (applies to orders of 100 or more only)

Qty Req. \_\_\_\_\_ Milk / Dark / Mixed Total \$ \_\_\_\_\_

#### Wrapped Singles @\$1.80 each

Qty Req. \_\_\_\_\_ Milk / Dark Total \$ \_\_\_\_\_

#### Bon Bon 3 Pack @\$4.50 each

Qty Req. \_\_\_\_\_ Milk / Dark Total \$ \_\_\_\_\_

#### Bon Bon 6 Pack @\$8.00 each

Qty Req. \_\_\_\_\_ Milk / Dark / Mixed Total \$ \_\_\_\_\_

#### 1 Dozen Gift Box @\$15.00 each

Qty Req. \_\_\_\_\_ Milk / Dark / Mixed Total \$ \_\_\_\_\_

#### 2 Dozen Family Box @\$29.00 each

Qty Req. \_\_\_\_\_ Milk / Dark / Mixed Total \$ \_\_\_\_\_

(Please circle your selection)



#### Loose Chocolates

\$14 per doz (milk, dark or mixed)  
Bulk loose orders 100 @ \$1.00 each



#### 3 Pack Bon Bon

\$4.50 (milk or dark)



#### 1 Doz Gift Box

\$15 (milk, dark or mixed)



#### Wrapped Singles

\$1.80 (milk or dark)



#### 6 Pack Bon Bon

\$8.00 (milk, dark or mixed)



#### 2 Doz Family Box

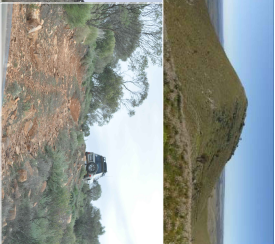
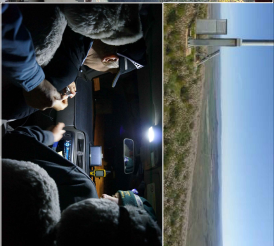
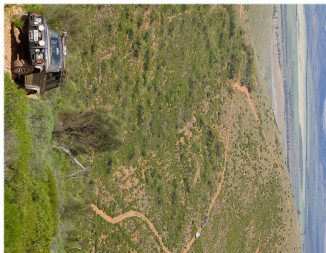
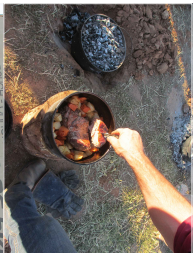
\$29.00 (milk, dark or mixed)



## Mount Lofy Rangers 4wd Club



Present



# 4WD Octoberfest

FRIDAY 29TH SEPT TO MONDAY 2ND OCT 2017

BASED AT WILLANGI BUSH ESCAPES - PETERBOROUGH

WHAT'S NEW THIS TIME YOU ASK?

MULTIPLE 4WD CLUB LEADERSHIP

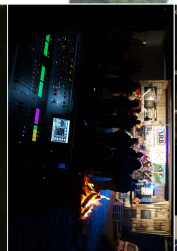
NEW PROPERTIES

NEW TRACKS

ADDITIONAL ACTIVITIES

COME AND JOIN THE FUN!!!!!!!!!!!!

DETAILS TO FOLLOW IN EARLY IN 2017



# OCTOBERFEST 2017

It's that time of year and we need to get cracking on Octoberfest 2017 planning.

Our first meeting to form the new sub-committee is on Friday 4<sup>th</sup> November 6.30 pm for dinner and 7.30 pm for meeting at the Maid of Auckland Function Rooms 926 South Rd, Edwardstown.

Paul has already had some initial discussions in regards to other club assistance, new properties and sponsorship proposals.

If you are interested in helping out please do not hesitate to join us (partners welcome too), so if you're coming please let Paul know on [treasurer@mountloftyrangers.com.au](mailto:treasurer@mountloftyrangers.com.au) or 0408 900 889, so we can ensure we have enough seats. If you can't make it on Friday 4<sup>th</sup> and want to be involved please can you please let Paul know on the contact details above.

---



## THE SNORKEL

It doesn't appear to be working



# TRAINING

## MT LOFTY RANGERS TRAINING

DATE	TRAINING
------	----------

### DRIVER TRAINING UNIT

DATE	TRAINING
November 5 <sup>th</sup> – 6 <sup>th</sup>	DTU Training – Peake (sand)
November 12 <sup>th</sup> – 13 <sup>th</sup>	DTU Training – GPS Ozi Explorer – Cavan \$10

## Club Trainers

**Education Officer:** Steve Townsend

**Assessors:** Steve Townsend, Mark Curtis, Jeff Morgan & Dave Willsmore

**Trainers:** Tim Byrne, Tom Doody, Glenn Lawson

For further information on training please email Steve Townsend

[training@mountloftyranglers.com.au](mailto:training@mountloftyranglers.com.au)

# FOR SALE

Auxiliary battery box & a portable fridge stand.

\$60.00 the lot

Or of course, \$30.00 each.

Contact Frank





# Take charge with REDARC

REDARC's range of products ensures that you'll always be ready to go... wherever you are!

## The Smart Start SBI ensures you'll never have a flat battery



The REDARC Smart Start® SBI is a microprocessor-controlled battery isolator designed for use as a solenoid priority system in multi-battery applications. It protects the start battery from excessive discharge, whilst allowing the auxiliary battery to supply non-essential loads. It's Australia's most trusted dual battery isolator, used by 4WD clubs throughout Australia.

## Dual battery chargers made especially for Australia



REDARC's BCDC In-vehicle Battery Chargers feature technology designed to charge batteries to 100%, regardless of their type or size. By providing a unique charging profile to each specific battery type, the BCDC is able to achieve and maintain an optimal charge in auxiliary batteries... at all times.

## Battery Management Systems for a complete solution



REDARC's Battery Management Systems, featuring the new Manager30, are state-of-the-art systems designed to charge and maintain auxiliary batteries used in recreational automotive and marine applications. They incorporate AC, DC and solar inputs to achieve the best possible charge.

For a complete list of products and technical information call 08 8322 4848 or visit [redarc.com.au](http://redarc.com.au)



AUSTRALIAN  
BUSINESS  
AWARDS  
2011 NATIONAL WINNER

THE POWER OF

**REDARC**



508

<https://www.facebook.com/RedarcElectronics/>

# TRIP REPORT: SALT CREEK

## **Courtesy of Jim**

When we learned that very wet and extremely windy conditions were forecasted for Salt Creek over the proposed weekend of our annual fishing competition we were left with no alternative other than to postpone the trip.

Naturally there were many disappointed people so when Eric announced the new dates, we were over the moon and started going through our tackle boxes checking and double checking we had everything needed to catch a fish.

## Day 1 (Friday 14<sup>th</sup>)

Eric was lucky enough to have Friday off from work so together with his son Adam and close friend Eric number 2, they were able to head off in the morning and make an early start. Soon after they set up camp Eric made the epic climb to the top of the sand dune behind our camp and called me to let me know the track conditions along the beach.

Shortly afterwards Barry arrived at the soft section which Eric warned us about but decided that he had to know what his new car was capable of so rather than go around it he would go straight through the middle and his new V8 Landcruiser just gobbled it up without any problems. Naturally after hearing this Eric had to make the epic climb to the top of the sand dune again to update me on the changing beach conditions along the beach.

I was only 4 days into my new job and had no holidays yet so my plan was to head out after work and get there after dark and stay the night at the Salt Creek camp ground and then do the beach drive the next morning but on overhearing one of Eric's track updates my manager gave me the afternoon off and I was able to do the beach drive before it got dark.

Once I arrived we were now all there and so Eric started handing out a little MLR Welcome pack to everyone which consisted of a complete pre-prepared ready to be clipped on salmon rig and a tin of CRC Tackle Guard, thanks Eric for tying the hooks and making the sinkers and thanks to CRC for the Tackle Guard.

Friday was a beautiful day, not a cloud in the sky, the water was dead flat and there was virtually no wind. It was perfect fishing weather, too bad nobody told the fish and the only thing caught all day was a sting ray by Eric.

As it got dark the fishing stopped and we all gathered by the fire where we discussed what went wrong and made excuses why no fish were caught. After all the excuses and after a few more drinks started 'Tomorrow I am going to get up at 5am, fish the morning tide and catch a monster of a fish, you wait and see', but of course nobody got up.



# TRIP REPORT: SALT CREEK

## Day 2 (Saturday 15<sup>th</sup>)

After a late night, nobody was able to get up at 5am like we talked about the night before but as we finished breakfast, one by one we headed out to the water's edge and threw our lines in. The weather had turned and it was now quite windy and a little coolish but that did not stop us, we fished all morning and just before midday Barry landed the first fish, it was a Mulloway but it was undersized so he had to throw it back. Eventually the tide had stopped moving and we were at low tide so we all decided to break for lunch.

After lunch we headed back out and fished some more and again the only fish caught was by Barry, another undersized Mulloway and again once the tide had stopped moving we decided to call it quits for the day and gather by the camp fire and have some dinner.

This time the topic of conversation around the camp fire was our previous MLR fishing trips and how one year the Roulettes visited us on their way to the Parafield air show and how they put on a show just for us. The conversation quickly turned to last years trip (which Barry won) and how everyone caught lots of fish and how big they were, naturally of course we are on a fishing trip so naturally everything was a little exaggerated.

As the night went on and after a few more red wines consumed some even more elaborate fishing stories were told when suddenly it hit us, other than Barry's two undersised Mulloway and Eric's sting ray, nobody had actually caught an eligible fish and that the coveted MLR fishing trophy was still there for the taking by anyone who could actually catch a fish, any fish, it just had to be legal, so again we decided to wake up at 5am the next morning and have another crack at it.

## Day 3 (Sunday 15<sup>th</sup>)

The next morning despite everyone saying they will be up at 5am, only Eric actually did it and couple of hours later the rest of us stagger out of our swags and tents and joked 'so much for the 5am start' and no sooner had we finished laughing, Eric walked into camp holding a good sized salmon. He did it, he actually got up at 5am and caught a fish, the fish which ultimately won the 2016 MLR Fishing competition.

The plan for the rest of the day was to have breakfast, pack up and do the drive down to Tea Tree before we turn around and come home, but after breakfast as we were all packing up it started to rain, not much but enough to get what was still out wet.

## TRIP REPORT: SALT CREEK

As we approached Tea Tree the track became wetter and wetter until the track was completely flooded, it wasn't looking promising for Tea Tree because once we all got through the flooded section of track we would just have to turn around and do it all over again so the decision was made to turn around and head back down to the 42 mile crossing. It was on this section of the beach where Barry was looking for every bit of shell grit or soft sand he could find to really test his new cars capabilities but on this occasion nothing was going to even come close to slowing down that new V8 Land Cruiser of his.

By now the rain was getting heavier so once we reached the Salt Creek camp ground we all aired back up and headed straight for the Salt Creek general store where we said good bye to Barry who went home via the S.E. Freeway while the rest of us stopped for a quick bite to eat and a cup of coffee before we headed back to Adelaide across the Wellington Ferry and through Langhorn Creek where we stopped for some wine tasting.

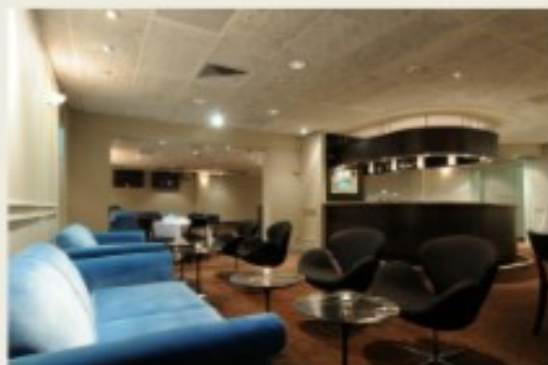
In short while we were not as successful on the fishing front as we have been in previous years we still all had a good time and I can honestly say that this trip too will one day be talked about around the camp fire of future trips

Finally although Barry, our carry over champion, caught 2 mulloway, they were both undersized so congratulations to Eric who caught the only eligible fish and therefore won the 2016 MLR fishing competition.





**Book your function with us!**



Go to our website for more details

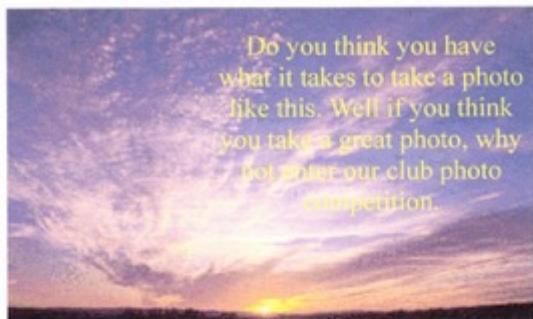
[www.belairhotel.com.au](http://www.belairhotel.com.au)

Or call Stacey 8278 8777

# PHOTO COMPETITION

## LAST CHANCE TO ENTER!!!!

# MOUNT LOFTY RANGERS PHOTO COMPETITION



### Categories for photos:

**This Country Australia** — photos of the outback, high country, riverscapes or picturesque views taken on club trips.

**Rangers having fun** — club members (rangers) having copious amounts of fun during club trips or social events.

There will be first and runner up prizes for each Category. There will also be a 'best overall' prize. To enter a photo please obtain an entry form from Lyssa rli79925@bigpond.net.au, complete the entry form (one for each photo). All entries to be emailed to Lyssa rli79925@bigpond.net.au or provide hard copy.

Competition will commence from the February general meeting with entries being accepted only by November general meeting.

Any questions to Lyssa 0401 132023.



# COMPETITION ENTRY FORM

Please complete the form below to provide details about your entry.

Club Member Name:

.....

Email address:

.....

Phone: .....

Category entry:



This Country Australia



Rangers having fun

Date of photo entry: .....

Place where photo was taken:

.....  
.....

Date photo was taken: .....

Name of club member that took photo:

.....

Signature of member submitting entry:

signature of organiser

.....

.....

Date entry received: .....

## GUEST SPEAKER

Guest speaker for November



Orange Sky Laundry is the world's first free mobile laundry service for the homeless. A crazy idea in 2014 to put two washing machines and two dryers in a van and wash and dry clothes for free. Starting in the streets of Brisbane, Orange Sky has now grown to 10 services across Australia in Brisbane, Gold Coast, Melbourne, Sydney, Sunshine Coast, Canberra, Perth, Adelaide, SE Melbourne and Hobart. Orange Sky Laundry now does over 6.9 tonnes of laundry every week. However most importantly, has over 1,300 hours of positive and genuine conversations every week.

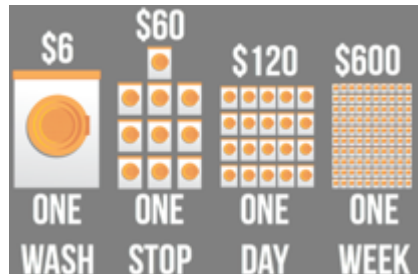
Orange Sky Laundry is a catalyst for conversation. In the one hour time it takes to wash and dry someone's clothes there is absolutely nothing to do but sit down on one of our 6 orange chairs and have a positive and genuine conversation between our everyday volunteers and everyday friends on the street.

### How can I donate?

Orange Sky Laundry is a DGR Type 1 charity run completely by donations. It costs us \$6 to wash and dry someone's clothes whilst we have an awesome chat. You can help right now by donating a tax deductible load of washing right now.

[www.orangeskylaundry.com.au/donate](http://www.orangeskylaundry.com.au/donate)

\$6 purchases 1 cycle \$60 purchases 10, \$120 purchases a day and \$600 a week.



**For further information or to book a guest speaker, please email Gary Light, Guest Speaker Co-Ordinator & Vice President at [vp@mountloftyrangers.com.au](mailto:vp@mountloftyrangers.com.au)**





Bruce's Meat specialising in local pasture grazed beef, local first cross lamb from the Strathalbyn area and our pork is all female from the Adelaide Hills through too Two Wells in the north. We make all our own smallgoods, ham, bacon, fritz and have over 20 flavours in our award winning range of sausages.



Going away on a 4WD trip to remote areas then come and see us first we vacuum seal your meat at no extra charge giving you up to 4 weeks shelf life in your fridge, no need to freeze it.



Poultry Options is Adelaide's only 100% free range fresh poultry shop. Exclusively stocking Lilydale Free Range Chicken, even our award winning chicken sausages and value added meal options are all made with Lilydale Chicken.



#### **4 Great Locations**

- Mitcham Square Shopping Centre
- Pasadena Green Shopping Centre
- Fairview Green Shopping Centre
- The Avenues – St Peters



# TRIP REPORT: PEAKE ‘TRAINING’

**Courtesy of Sheena Dunaiski**

The Peake weekend arrived after all the wild weather, and Lothar and I decided we would go even though the training would not proceed as scheduled, since Steve was ill. The drive there on Friday was uneventful and we were pleased to see that there had been substantial rains there too as the campground at Peake had a big “lake” in the middle. We were the first to arrive and decided to try out some of the dunes before setting up camp for the night. We had the place to ourselves and enjoyed a quiet red by the fire watching the light fade over our “private lake”.



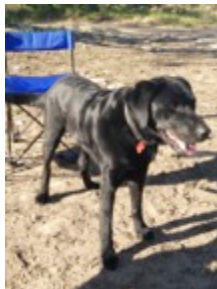
Next morning, we were just having brekkie and predicting when other cars would arrive when we saw the first one pull in just after 8am. It was Anne and Malcolm Morris with Malcolm’s guide dog Albie. After they set up their trailer we headed off for a morning drive. The sand was pretty firm in the open areas but we found softer patches in the more sheltered gullies between the dunes. At one point Lothar got the Prado bottomed out on the soft crest of a dune; so in true MLR fashion the game was on. Anne fetched her spade to dig the soft sand from the front tyres, while Malcolm used his bare hands to scrap the sand from in front of

the back tyres so we could position the Maxtrax. After such great teamwork we soon rolled forward and down the dune, ready to take on the next challenge.

## TRIP REPORT: PEAKE 'TRAINING'



After all that hard work if it was coffee time so we headed back to camp. To our surprise no one else had turned up, but this didn't stop us from heading off for another drive, this time ladies leading. It was great to drive around just enjoying the day and learning new tricks in the sand. We spent a leisurely afternoon enjoying the sunshine while Albie was off duty and escaped to run through our little lake. During the night a strong wind whipped up the dust and by morning we had the challenge to pack up in a sand storm.



# HIRER BEWARE!

**Courtesy of Lothar Dunaiski**

When hiring a vehicle, specifically a 4x4, it is important to ask the right questions. It is well known that hired off-road vehicles get a beating, probably more so from non 4x4 drivers. Therefore, it is understandable that hire companies take innovative measures to protect their vehicles.

Recently a friend returned from their Botswana trip and was alerted by the fine print, that by driving through deep water, an additional fee would be imposed and possibly the insurance would be cancelled. Shortly before returning the vehicle he was cleaning it and discovered a small jar mounted out of sight in the engine bay. He queried this during the vehicle return inspection and was told that had that jar contained water, it would indicate that the vehicle had gone through deep water. Nowhere was this monitoring mentioned in the documentation.

When I made enquiries for our Namibia/Botswana MLR trip, I contacted a reputable hire company for 4x4 vehicles in Namibia, and no mention was made of the following points. Later, I found some additional information on a blog site about how this company monitor a vehicle route and speed with the on board GPS system, and use this to make judgements about responsibility on insurance and repair claims.

I contacted them and based on what the blogs said, I asked the following questions to satisfy my curiosity:

**1. Do all your vehicle have tracking devises?**

ANSWER: Yes, some vehicles do have 'live' tracking, others are 'passive' which means that data is exported from the vehicle.

**2. What exactly is being tracked?**

**i.e. Speed, routing, gravel and tar road driving.**

ANSWER: Vehicle specifications such as vehicle type and registration number, date, time, GPS coordinates (exact mapped location using Google maps), complete route driven, gravel and tar road driving and most important the real GPS speed driven (so NOT what is on the speedo meter as this has a deviation of approx. 5%).

**3. Does your system warn the clients when they transgress any of your conditions and if so how is this done?**

ANSWER: A beep signal sounds when the client is driving over 120 km/hr (based on GPS speed, so at approx. 125 km/hr by speedo).

# HIRER BEWARE!

**4. Do you phone the clients to inform them of the transgression?**

ANSWER: No, we only inform the client beforehand of the fact that a tracking system is in place and what the consequences can be in case of severe speeding. During the clients' rental period we do not look into the details of the tracking system (in case of a 'live system'). Data is only analysed afterwards in case of a severe accident.

**5. After how many transgression does the insurance laps if at all?**

ANSWER: in case of a severe accident, the data is handed over to a specialised company who makes an independent report taken into account the overall drivers behaviour during the rental period and looking specifically at the moment of the 'trigger point' of the accident, meaning the situation just before the accident. This report is handed over to our insurance company, for them to determine if a situation of gross negligence is applicable. The insurance company will then issue a letter to confirm if the insurance claim has been accepted or declined.

**6. Do you inform the clients and us when such insurance has lapsed?**

ANSWER: Yes, but only after a severe accident has happened.

**7. Does your Tracking system in anyway infringe on the privacy of the clients?**

ANSWER: No

**9. Do you inform the clients of the Tracking system at handover of the vehicle.**

ANSWER: Yes. The client is in many ways informed about the fact that all our vehicles do have tracking devices. They even sign for it on the rental contract that they are made aware of it. It is verbally explained when they receive the vehicle and sign the contract. An obligatory safety-video must be watched informing them about all the ins-and-outs including the GPS tracking. Furthermore, a sticker is visible from the inside on the windscreen. And as a warning, we do have a 'wall of shame' with information of accidents that happened in the past and a wreck on display.

**10. Do you use the Tracking system to proof negligence on the part of the clients in the event of an accident or other damage to the vehicle.**

ANSWER: Yes. See above.

It is important to ask the right questions and fortunately this company was upfront and provided me with some reasonable answers.

## A WORD FROM THE EDITOR

Don't forget to send me your piccies  
and trip report for the magazine!

Cheers Kylie

[magazine@mountloftyrangers.com.au](mailto:magazine@mountloftyrangers.com.au)

