



Rangers' Review

Mount Lofty Rangers Inc.

PO Box 1150, Blackwood SA 5051
www.mountloftyrangers.com.au

Volume 15 No.14

April 2010



Lunch stop at Memory Cove – Lincoln National Park

TABLE OF CONTENTS

Editorial	3
President's Report	4
Social Scene	7
4WD Matters.....	9
Trip Report—Beachport 2010.....	10
Cooper basin Flood Report.....	13
For Sale	20
Trip Report—Loveday 4x4 Park.....	23
Upcoming Trips	26
Training	32
Safety Alert	35

Mount Lofty Rangers Inc.

About Us

The Club's aim is to enjoy all aspects of owning and using our 4WDs while enjoying the diverse surroundings offered by this great country. We are a club of 4WD enthusiasts who enjoy challenging driving, regular trips, camping, camp cooks and a great social scene on and off track.

Membership

Membership is open to anyone who owns a 4WD regardless of its make or model and has a passion for driving. Mount Lofty Rangers Inc is an affiliated member of the SA Association of 4WD Clubs.

Club Outings

The Mount Lofty Rangers provides regular day, weekend and extended four wheel drive trips, lead by experienced trip leaders. Trips are rated on the level of difficulty and are available to all members and guests.

The club has a dedicated social committee who also organises regular events that complement the club trips.

Experience and Training

Our current members possess a wide range of skills ranging from beginner to advanced. The club has a number of accredited instructors and assessors, and is involved in regular training via the SAAFWDC Driver Training Unit.

Meetings

Club meetings are the second Monday of each month* and are held at the

Blackwood Football Club Trevor Terrace Blackwood

Time 7:15 pm

*Except where this Monday falls on a long weekend then the meeting is held on the 3rd Monday of the month

Information

For more information on the Club please check out our website at:

www.mountloftyrangers.com.au

MT LOFTY RANGERS UHF CLUB CHANNEL NO 27

Editorial

All,

Welcome to the April edition of your club magazine. Hope everyone had a great Easter break ?

Our weekend in Pt Lincoln shark diving went well, with the only issues being there were no sharks and the sea's were very rough !!!! Lincoln National Park was very nice though and we will definitely be going back for a longer trip in the future (and hopefully catching up with those elusive Great Whites).

Page 35 has a timely reminder for all desert travellers about the need for caution when cresting not just sand hills, but any crest on unmade roads. This is in light of the recent fatality in the Cooper Basin where two vehicles collided head on - over the crest of a dune.

Don't forget to send me your trip reports for your trips away over Easter, as the magazine is always looking for new material.

Cheers Neil Cook



PRESIDENTIAL REPORT APRIL 2010

Hello all club members

I hope everyone had an enjoyable & safe Easter long week end.

At this month's meeting it is important that we receive nominations for all the positions on the club's committee as the AGM is coming up again in May. Therefore I have left blank nomination forms on everyone's table to fill out during the course of the club's general meeting. You can either nominate yourself or someone else with in the club for any of the positions, currently all positions are available for nominations. Once that form has been completed by having signatures of the nominator, a seconder & the person receiving that nomination could they please be handed back to myself. It is very important that we fill all positions on the committee to be a correctly running club as per the Clubs constitutional document. Which has implications to our insurance which in turns restricts are ability to run 4wd drive trips & like myself that is the major reason for us all joining a four wheel drive club.

The key 5 positions that must be filled are as follows President, Vice President, Secretary/Public Officer, Treasurer & Association Delegate. Other positions we would need as a minimum to be filled are Training Officer, Membership Officer, Trips co-ordinator & Magazine Officer. Supplementary positions are Property Officer, Merchandise Officer, Social Trip co-ordinator(s) & Web Site administrator.

So if you are interested in sitting for one of the positions on the committee could you have a talk with one of the current committee members to find out in more detail exactly what their role is, what they do & how much time they spend doing that role.

It does not take allot of your time being on the committee it would be the committee meeting itself & the clubs general meeting which both are held once a month. It would be good to get new people on the committee to bring along their new ideas & enthusiasm to run the club on behalf of the other club members. There will always be the previous year's committee members around the club to provide you any support or answer questions you may have to help you undertake your role. So I implore all club members to consider standing for one of the positions on the club committee.



TOTAL TRACTION TYRES

Darren Callary
0404 099 397

**80A O'SULLIVAN BEACH
RD, LONSDALE S.A. 5160
Ph: 8186 1011**

sales@totaltractiontyres.com

Specialising in 4x4 - Wheels, Tyres and Suspension



LEGENDARY OFF ROAD TYRES

www.totaltractiontyres.com.au



PRE-TRIP SERVICING,
INSPECTIONS & ADVICE

****FULLY Qualified mechanic****

**QUALITY NEW & USED TYRES & MAGS—ALL BRANDS—ALL SIZES
REPAIRS—BALANCING—WHEEL ALIGNMENT—ACCESSORIES—BATTERIES
EXPERT ADVICE—QUALITY, RELIABLE SERVICE
LIGHTFORCE & STAUN PRODUCT STOCKIST, EVAKOOL FRIDGE STOCKIST
RIDEPRO & BILSTEIN SPECIALIST**

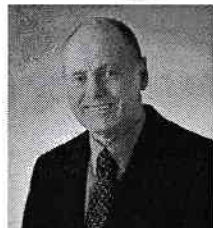
ABN 74 280 871 853



VogueLending

THREE IMPORTANT QUESTIONS

- Is your Bank giving you the 'run around' ?
- Does your home loan need its free annual health check ?
- Have you ever felt uncomfortable inviting a stranger into your home to discuss finance ?

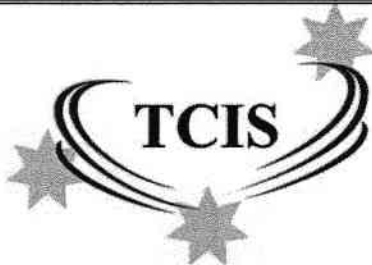


Now it's easy and hassle free to discuss your finance and investment property needs in total confidentiality with someone you know

Proud sponsor of the Mount Lofty Rangers Magazine

**Home Loans, Refinancing,
Debt Reduction, First Home
Buyers**

Paul West has been a club member for 12 years and really enjoys helping people achieve their dreams.
Phone anytime on 83874255 or
0405484448.



Insurance Brokers Pty Ltd

FOR ALL YOUR INSURANCE NEEDS

CALL

KAI HEINSEN

Tel: 8278 7000

kai@tcis.com.au

SPECIALIST 4WD CONTRACTS

Proud sponsor of the Mount Lofty Rangers Magazine

Social Scene

What: Rock the Mount and Remarkable Ute Muster

Where: Melrose, SA (270km north of Adelaide, Approx 2 ½-3 hrs drive)

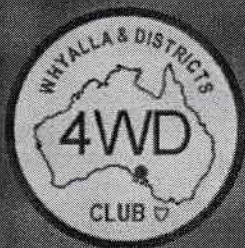
When: Friday 16th to Sunday 18th April

Cost: Weekend Pass \$125 (includes: Rock the mount stubby holder, 2 nights camping with showers at the showgrounds (fri & sat night), Breakfast on Saturday and Sunday, entry to view the Remarkable Ute Muster, day stage entertainment, **Lee Kernaghan's Planet Country concert** and unlimited shuttle bus between the Showgrounds and Melrose's Main Street).

Website: www.remarkablefestivals.com.au

Everyone that wants to attend this event must book their own tickets by calling them on 0438 888 307 or by email info@remarkablefestivals.com.au

2010 4WD WEEKEND in WHYALLA (WW6)



2nd, 3rd & 4th of October 2010




Activities include:

- Camp-oven Cooking Competition • Mt. Laura Circuit
- Get to know your GPS Session • Tagalong tours
- Night Navigation Challenge • Andrew's Canyon
- Camping with all facilities at Whyalla Showgrounds

Visit **www.whyalla4wd.org.au** for more details.

This event is open to all financial members of the South Australian 4WD Association. For Insurance purposes all weekend participants must be financial members of a SAAFWDC Club, and register this event with your Club as a Club Trip.




Official Information Release from Four Wheel Drive SA

4WD Matters

South Australian Association of Four Wheel Drive Clubs Incorporated ABN 24 036 898 953 - www.saa4wdc.asn.au

March 2010
- 10/03/2010



FWDSA Clubs at the 2010 Caravan & Camping Show

So how does the Caravan Show affect your Club? Well all Clubs were promoted at the FWDSA display stand and Club brochures were handed out too.

The DTU provided a daily seminar and thrice-daily "Live Recovery Demonstrations".

At this show the FWDSA stand had an integrated display with an exclusive club focus.

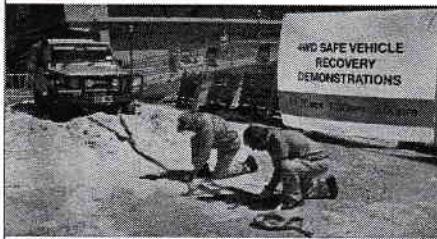
It was staffed by 40 Club Members from 10 Clubs.

The creation of display material and stand construction was co-ordinated with an ongoing show committee of 12 Clubs under the auspices of the Association Executive

FWDSA was among the exhibitors in the Stirling Angas Pavilion which formed the SA Outdoor Adventure Show segment of the Caravan Show.

The official blurb described this area as ".....an added dimension.....to appeal to the more active self-drive travellers".

The potential exposure to upwards of 40,000 show patrons over 5 days makes this a significant promotional opportunity.




The new FWDSA Brochure had its first outing at the Show and proved an attention grabber on our stand.

The brochure has Club location labels positioned on maps of SA Country and Adelaide Metro areas.

The concept is to give potential members some idea where our Clubs are located, but to refer them to the FWDSA website for Club contact details.

A photocopied download of the website detail was handed out at the Show.



Thank You List:

The following organisations contributed in various ways to our presence at the Caravan & Camping Show:

- Tourism SA
- Keep SA Beautiful (KESAB)
- ARB 4X4 Accessories - Regency Pk.
- Terry Howe Printing - Blair Athol
- Opposite Lock - Mile End
- Fourplay 4x4 - Holden Hill
- Caravan & Camping Industry Assoc SA (CCIASA)

Edited by 4WD Adventurers Club of SA inc- Direct all correspondence to Editor FWDSA email:- saa4wdc@saa4wdc.asn.au

4WD Matters March 2010 - 10/03/2010 : Disclaimer: Whilst every endeavour is made to ensure the accuracy of the material in this publication, Four Wheel Drive South Australia shall not be held responsible for any errors, omissions or inaccuracies.

Trip report, Sunday 24th January 2010 at Beachport – Carpenter Rocks to the border

With a group of a variety of 13 vehicles we set off with Mark Curtis and Paul West in the lead.

We headed south to Eastern Rendelsham where we turned off to take dirt roads via the huge Canunda and Lake Bonney Windfarms (they are really a magnificent and majestic sight). We stopped to look at the huge turbine blade which gave us a better concept of just how large the windmills are. We had a quick morning tea at Blackfellow's Caves where we aired down before heading onto the beach to drive to Port Macdonnell. At first the sand was really firm and we were able to travel quickly along the beach for a while. We then had to go onto an inland track to get past a headland. Onto the beach again for more sand driving and we took our second excursion off the beach at Beam Valley where there were some great shacks.

We stopped for a photo shoot on the top of a cliff which gave a great view north of the cliffs, and where we were all wishing for wings, so we could fly down to a large flat rock that the waves were breaking over, and throw in craypots to grab dinner.

We had another view north a bit further on and then had to leave the beach and drive through Cape Douglas. Onto the beach again we went – this time the sea was a completely different colour and the sand was fairly soft. Ali had trouble staying in the tracks as she had too much left hand down and the 4WD was pushing sand. Thanks to the guys on the radios for their advice!!! (We had put a tape around the steering wheel so we would know instantly that it was straight, but she was 360 degrees off!) Someone gave some advice afterwards – for the navigator to stick head out of the window to see where the wheels were pointing!

We continued to go on an off the beach, to avoid large rocky outcrops and steep sandy slopes, and again it was fairly hard sand. It wasn't long before we came across another expanse of soft sand and had no problems as we kept an eye on the steering wheel!

Driving along next the surf is a fantastic experience and site and we really enjoyed it. We are really lucky in SA to be able to drive along our wonderful coastline.

On the last section of beach before Port Macdonnell a silver Prado bottomed out -and with expert advice being given - managed to get out. We managed to leave deep holes for the next group though. Advice: Let tyres down and go backwards and forwards on the starter motor to form a ramp and it then should be ok to drive out.

We enjoyed our lunch at Port Macdonnell and the second group led by Shorty caught up with us just as we were leaving. We had to negotiate around large drains on the next couple of sections of beaches and found a vehicle from the other group stuck in the drain. They were setting up the snatching equipment as we drove past. The beach just after that certainly smelt like Rotorua!

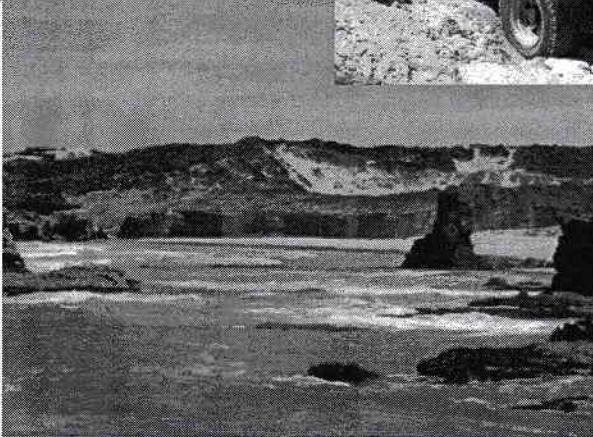
We were amazed to come across a large flock of black swans happily swimming around in the sea in a sheltered area. A bit further on, we came across small nests built for shorebirds. We then had to give way to a pig!!

We hit really soft sand and a Hilux got stuck in front of us. This led to us stopping and much to our dismay when we got going again, about 50 metres we got stuck with the back of the vehicle slanting towards the sea! We tried numerous times to get going but to no avail. Many thanks to Mark and Paul and the two Erics who came to our aid and dug and sand tracked us out. Eric was a bit concerned at the sea lapping at his feet as he was digging. The four vehicles that had travelled on that stretch of beach then returned via the higher side without mishap. Advice: Remember the 100 metre rule.

We left Browns Beach just before Green Point and drove inland to air up. Most of the group returned to base, but a few vehicles visited Piccaninni Ponds on the way back.

We had a great day and learnt heaps, and thanks go to Mark who led our group with the able assistance of Paul!

Ali Ford



Thought this info may be of interest to upcoming desert travelers. *Ed*

Cooper Flood Report 25 March 29th 2010

Synopsis: The total volume of water of this flood downstream of Innamincka is now estimated at 9000gigalitres which 95% the 1990 flood and the equal 3rd largest flood since Moomba Gas Plant was established. Impact of this flood has been hard to estimate in advance as volumes recorded through Windorah in 2010 were of minor flood level and had been exceeded in the 1989,1990,1991, 2000 & 2004 floods.

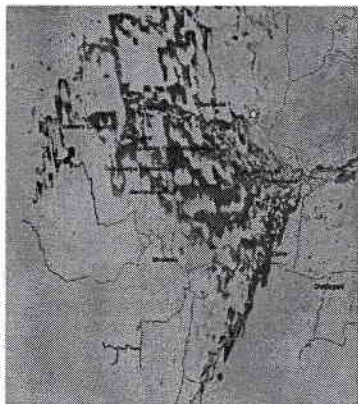
Nappamerri Bridge has significant damage to approach roads. Main bridge has emerged - significant damage to approach roads and eastern side of bridge(see photos below)

The Tirrawarra Rd is cut by flood waters -access not expected until early-mid My as water is still flowing strongly across the road at Merrimelia.

Adelaide Road: Adelaide rd cut on Sunday 21st March at 1345hrs. Expect to be closed for around 45 days(not open before May 5th). Alternate route via Lake Blanche & Strike Oils Weena location will be opened up subject to Dept. of Environment & Heritage approval.

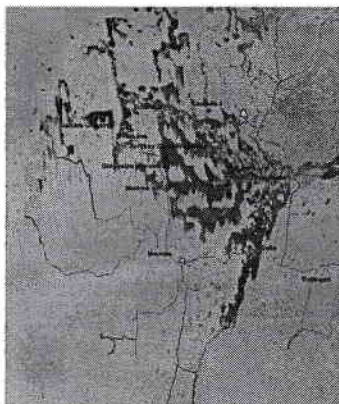
Satellite Image below(March 28th 1100hrs) showing continued break out of waters into the Cooper Basin flood plains.

Image March 28



Rangers Review

Image March 18th



Windorah: Levels have fallen to near pool level and there is full road access across the Cooper Ck at Windorah - there are no floods in the system upstream of Windorah.

Ballera-Jackson crossing: The current level is 0.53m over the crossing and falling at 5cm/day. The crossing should be fully emerged by April 9th except for the odd low spot.

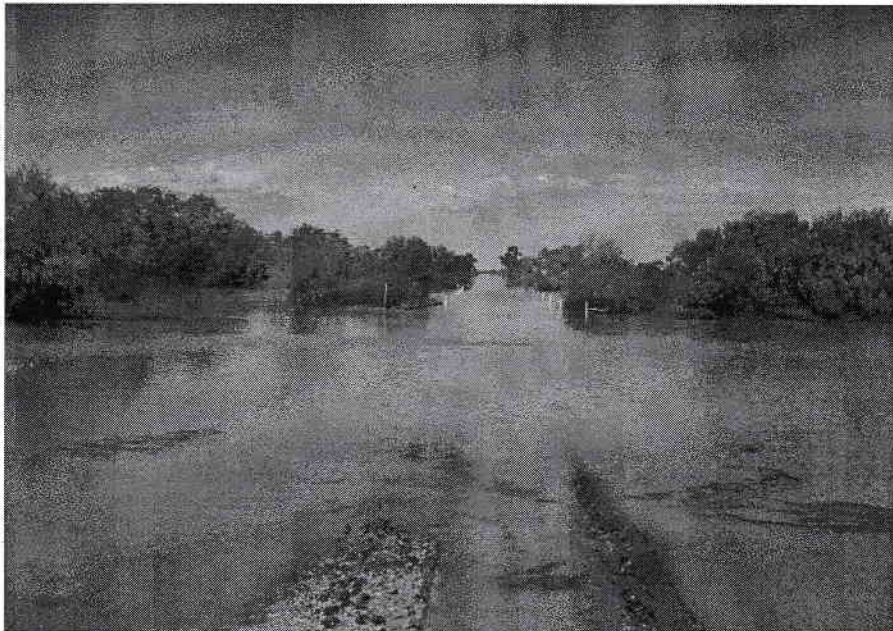
Innaminka Crossing: Levels peaked at 11.3m gauge level or 9.4m over the crossing on Sunday 14th March. I expect the crossing to remain closed until early to mid-June based on 1990 flood data. Current level is 8.0m over the crossing and falling ~10cm/day. Once the level falls to below 4m gauge Ht rate of fall becomes much less.

Della Rd: The Della Rd was closed on Monday 15th March after being breeched by Strzelecki waters at 5:30am near Adams bore. The road is also cut near Blackies bore with flood waters flowing south into the Namur channel(Map ref. B6). Further breeching of the road has occurred near Moomba 7. No access from Moomba to Della is expected until June.

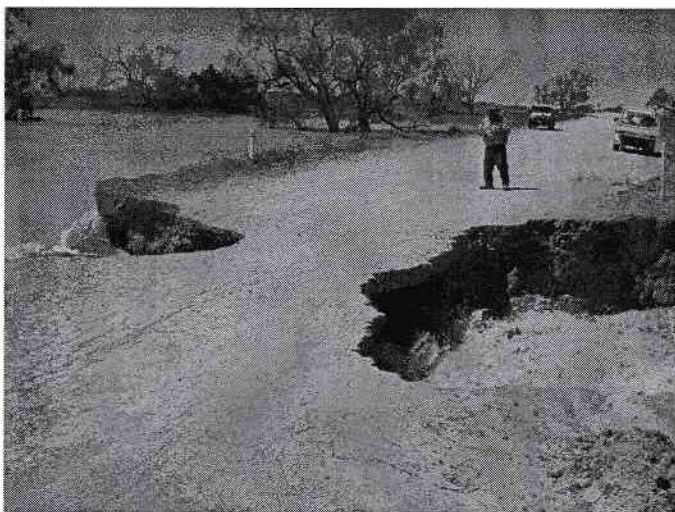
Nappamerri Bridge damage March 28



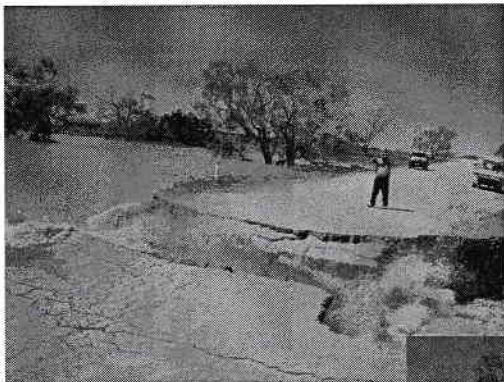
Ballera-Jackson crossing(Mar 28th)



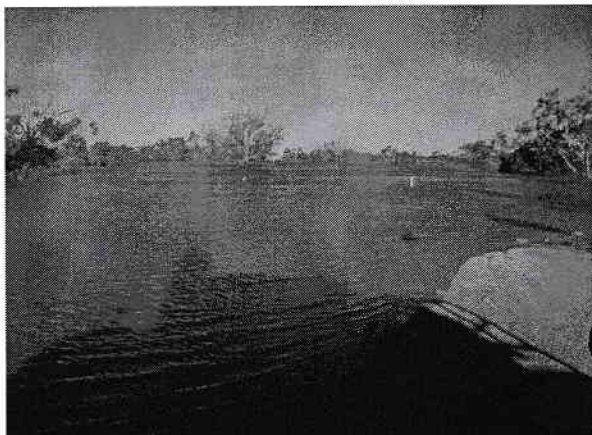
Strzelecki Track breeched by Strzelecki Creek 21/3/10



Strzelecki Track breeched by Strzelecki Creek 21/3/10



Strzelecki Track breeched by Strzelecki Creek 24/3/10



MILITARY VEHICLE PRESERVATION SOCIETY OF SOUTH AUSTRALIA INC.



NATIONAL MILITARY VEHICLE MUSEUM

10 Sturton Road Edinburgh Parks 5111

PO Box 174 Salisbury 5108

Ph: (08) 8341 3011

ABN: 36 547 733 430

Email: secretary@military-vehicle-museum.org.au

www.military-vehicle-museum.org.au

<http://www.military-vehicle-museum.org.au>



4 WD Parts Swap Meet

Sunday 06 th June 2010 Gates Open 5 AM

Have you got a shed full of 4WD Parts & Accessories ?, now is the Time & Place to SELL,
& Find something that you Need!!.

The Military Vehicle Preservation Society SA is holding our, INAUGURAL SWAP MEET for
4WD & Military Vehicle parts, at ,our National Military Vehicle Museum area, Sturton RD,
Edinburgh Parks SA, South of the RAAF BASE.

This will be the opportunity to SELL all of these 4WD parts and accessories, sitting in your
shed.

Being a Military Vehicle Club, parts, associated equipment, uniforms & other items will be
for sale.

Our Museum area is located at Sturton Rd Edinburgh Parks SA, off Edinburgh Rd UBD MAP 61,
A4 in the new 2009/10 books.

Our site has a huge secure area available for VENDORS, with a network of hard standing
roads and large grassed areas.

Public parking will be outside the secure area and adjacent the Entrance Gates.

Food & Drink will be available on site.

Demonstrations of, 4 x 4 and 6 x 6 Military Vehicle operation.

\$5.00 Entry, Vendors & Public.

Trade and Club Stands welcome.

9 AM Visit our Military Vehicle Museum

CONTACT--- Trevor Brown trevload@esc.net.au 0418 829 320, 83841695 leave a message.



The National military vehicle museum
PRESERVING YESTERDAYS HISTORY - TODAY - FOR TOMORROW



HOW TO IDENTIFY A STROKE

Blood Clots/Stroke - They Now Have a Fourth Indicator, the Tongue

STROKE: Remember the 1st Three Letters.... S. T. R.

STROKE IDENTIFICATION:

During a BBQ, a woman stumbled and took a little fall - she assured everyone that she was fine (they offered to call paramedics) .she said she had just tripped over a brick because of her new shoes.

They got her cleaned up and got her a new plate of food. While she appeared a bit shaken up, Jane went about enjoying herself the rest of the evening

Jane's husband called later telling everyone that his wife had been taken to the hospital -

(at 6:00pm Jane passed away.) She had suffered a stroke at the BBQ. Had they known how to identify the signs of a stroke, perhaps Jane would be with us today. Some don't die. They end up in a helpless, hopeless condition instead.

It only takes a minute to read this...

A neurologist says that if he can get to a stroke victim within 3 hours he can totally reverse the effects of a stroke....totally. He said the trick was getting a stroke recognized, diagnosed, and then getting the patient medically cared for within 3 hours, which is tough.

RECOGNIZING A STROKE

Thank God for the sense to remember the '3' steps, STR. Read and Learn!

Sometimes symptoms of a stroke are difficult to identify. Unfortunately, the lack of awareness spells disaster. The stroke victim may suffer severe brain damage when people nearby fail to recognize the symptoms of a stroke.

Now doctors say a bystander can recognize a stroke by asking three simple questions:

S *Ask the individual to SMILE.

T *Ask the person to TALK and SPEAK A SIMPLE SENTENCE (Coherently)

(i.e. It is sunny out today.)

R *Ask him or her to RAISE BOTH ARMS.

If he or she has trouble with ANY ONE of these tasks, call emergency number immediately and describe the symptoms to the dispatcher.

New Sign of a Stroke ----- Stick out Your Tongue

NOTE: Another 'sign' of a stroke is this: Ask the person to 'stick' out his or her tongue.. If the tongue is 'crooked', if it goes to one side or the other, that is also an indication of a stroke.

FOR SALE

General

Garmin Quest GPS Navigator

Kit includes Navigator, Map CD, Suction Cup Mount, External Speaker with 12-24V Adaptor, A/C Charger, USB Interface Cable and All Operating Manuals.

Comes with full Australian Street Level Mapping Preloaded
Country Mapping Downloadable

Automatically creates routes with Turn by Turn Directions

Voice prompts for Navigation Instructions

High Resolution bright colour display

Brand new in box never used.

Full Warranty

\$650

Contact Glenn Bull 0410 648 410

CGear annexe matting - special discount offer to all club members.

Small 1.8m x 2.4m - RRP \$109 - Club price \$85.00.

Medium 2.4m x 4.3m - RRP \$208 - Club price \$176

Large 2.4m X 6.0m -RRP \$274 - Club price \$220

Extra Large 3.6m x 4.6m RRP \$307 - Club price \$247

For more info on this product See Paul Tabone or phone him on
Ph 8276 5666

FOR SALE

The latest edition of Camps Australia 5

This is a great book for finding camp sites when in new areas.

B4 size spiral bound with camp site pics \$70 RRP normally \$79.95

A4 paper back \$40 RRP normally \$49.95

I have both in stock at the moment.

Cheers

Paul Tabone

Mitsubishi Pajero

1. Team Poly bull bar, Good condition, couple of light scratches, suit NL,
\$400 ono

Neil Cook 0400 416 220 nlhcook@adam.com.au

Toyota Landcruiser

For sale : set of 4 Suzuki wheels and tyres in reas. cond. \$100.00.
set of 5 - 6 stud Toyota skinny split rims and tyres in good cond.
\$150.00.

CONTACT LES TOOMER 0409285232.

TO SUIT 80 / 100 SERIES SOLID AXLE : Set of 2" lift heavy duty
coil springs, EFS TLC-102 front (brand new), TLC-113HDE rear
(5000km travelled), \$200.

For further info & specs contact Neil Cook 0400 416 220

FOR SALE



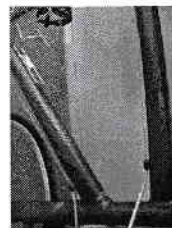
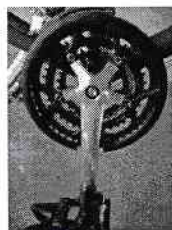
2008 SPECIALIZED "SIRRUS" FLAT BAR ROAD BIKE

24 speed - Shimano gears
56.5 cm seat post to head stem
57 cm seat post to pedal crank
Toe clip pedals - Twin drink holders

Only ridden a handful of times,
I need a racing bike

\$580.00 ono

PHONE: TOM DOODY 0428 216 307



Easter at Lovedays 4WD Park

Hi guys

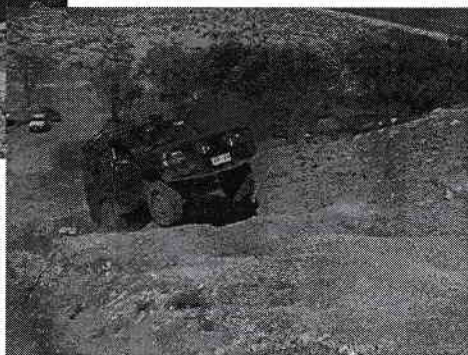
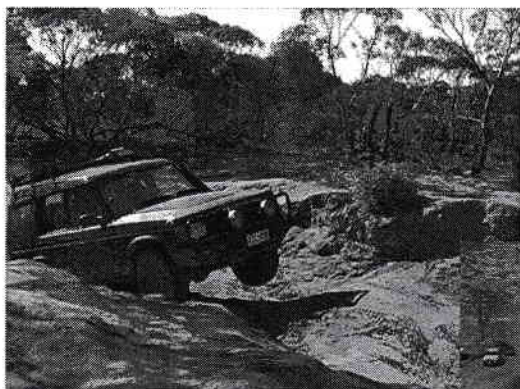
Had a fun weekend with Luke Laura and his mates from TJM. I was responsible, mature, careful and conservative. Not normally adjectives you would associate with me and certainly not at Lovedays 4WD park.

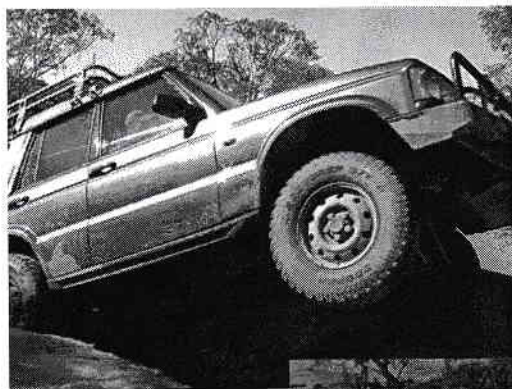
Still the car came back in one piece with no damage, well a few scratches on my newly made steel rear bumper. Its possible if I still had the old plastic one it might not have survived the exercise.

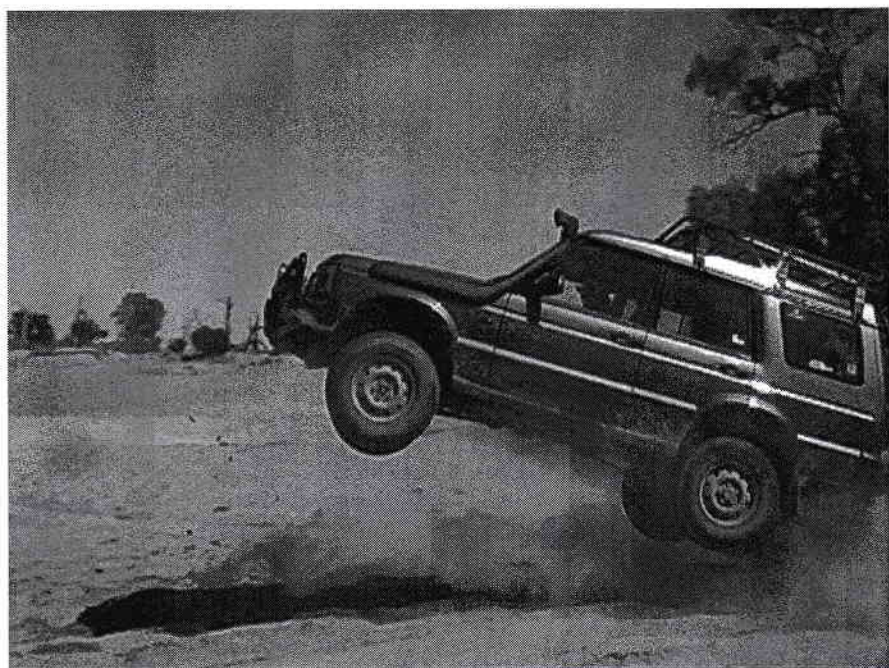
Luke on the other hand did a diff on the side of a very difficult hill climb, one which we had both completed the day before, in my case twice. Still 4 hours and \$50 later he had a better one than he had come with. Too much power for one so young.

There's a few pictures attached just of me at this stage but if anyone is interested there's heaps more as well as a video which will put it all into context. I saved the best til last.

Wayne







Upcoming Trips

Summary of up coming trips:

When putting your name down for a trip you **MUST include your contact number** If you cannot attend and your name is on the trip sheet you **MUST** contact the trip leader or Trips coordinator.

- | | |
|---------------------|----------------------------|
| ♦ 23-26 April | Ngarkat & Border Track |
| ♦ 5-6 June | Peake |
| ♦ 2-11 July | Simpson Desert |
| ♦ 24-25 July | Kapunda Area |
| ♦ July /August 2010 | Cape York |
| ♦ 2-4 October | Loveday 4x4 Adventure park |
| ♦ 2-4 October | Weekend In Whyalla 6 |

Club Trainers

Trainers: Ian Manglesdorf, & Tim Byrne

Assessors: Ken Bradey, Mark Curtis, Jeff Morgan, Ricky Esser, Paul Tabone

Advisors: Brenton Bowley

MLR Club Training

Contact: Paul Tabone, Education Officer Mobile: 0417 080 663

Unless otherwise specified, ALL MLR trips use UHF channel 27

Upcoming Trips

Trip	Ngarkat Conservation Park
Date/s – Duration	23rd to 26th April
Trip Leaders	Mark Curtis
Convoy limit	10
Distance – Kms	500+
Departure / meeting point & time	TBA
Difficulty	TBA
General comments	Tintinara-Bucks Camp-North through park centre-Pine Hut Soak-Mt Shaugh-Red Bluff

Unless otherwise specified, ALL MLR trips use UHF channel 27

Trip	Pendleton Farm
Date/s – Duration	23rd to 26th April
Trip Leaders	Paul McGregor
Convoy limit	10
Distance – Kms	400
Departure / meeting point & time	TBA
Difficulty	TBA
General comments	Farm stay at Keith, with trip into Ngarkat and Border Track.

Upcoming Trips

Trip	Innamincka
Date/s – Duration	15th to 27th May
Trip Leaders	Mark Curtis
Convoy limit	6
Distance – Kms	TBA
Departure / meeting point & time	TBA
Difficulty	TBA
General comments	Strez track to Innamincka-Bore Track-Stuart National park

CANCELLED DUE TO FLOODS

Unless otherwise specified, ALL MLR trips use UHF channel 27

Trip	Peake
Date/s – Duration	5-6 June 2010
Trip Leaders	Ken Bradey
Convoy limit	8-12
Distance – Kms	400
Departure / meeting point & time	TBA
Difficulty	All difficulties
General comments	Sand Driving - Sand Flag/Shovel/Snatch Strap/Compressor required

Upcoming Trips

Trip	Simpson Desert
Date/s – Duration	2-11 July 2010
Trip Leaders	Mark Curtis
Convoy limit	6
Distance – Kms	2000+
Departure / meeting point & time	TBA
Difficulty	Medium to Hard
General comments	West to East crossing

Unless otherwise specified, ALL MLR trips use UHF channel 27

Trip	Cape York
Date/s – Duration	July/August 2010
Trip Leaders	Les Toomer
Convoy limit	Expressions of interest required
Distance – Kms	Lots TBA
Departure / meeting point & time	TBA
Difficulty	Moderate to very hard
General comments	

Upcoming Trips

Trip	Kapunda Area
Date/s – Duration	24-25 July 2010
Trip Leaders	Mark Moss
Convoy limit	TBA
Distance – Kms	TBA
Departure / meeting point & time	TBA
Difficulty	TBA
General comments	Dirt Roads & tracks, camping overnight at Robertstown.

Unless otherwise specified, ALL MLR trips use UHF channel 27

Trip	Weekend in Whyalla 6
Date/s – Duration	2-4 October 2010
Trip Leaders	TBA
Convoy limit	Non
Distance – Kms	1000
Departure / meeting point & time	TBA
Difficulty	Various
General comments	October Long Weekend, see flyer in mag

Upcoming Trips

Trip	Loveday 4x4 Adventure Park
Date/s – Duration	2-4 October 2010
Trip Leaders	David Lamb
Convoy limit	TBA
Distance – Kms	1000
Departure / meeting point & time	TBA
Difficulty	TBA
General comments	Private property on the banks of the River Murray in the Riverland. October Long Weekend

Unless otherwise specified, ALL MLR trips use UHF channel 27

TRAINING

Below are some dates for DTU ran training & MLR club only training.
This will be the last of the training offered by the DTU.

I strongly recommend any members wanting to do training get to some of these events.

This is for anyone wanting to start the training you MUST do this first.
This will be the only theory course for 2010.

Club Training - Basic theory at Cavan, 13th - 14th March 2010; Practical 20-21 March at Cherry Gardens

Club Training - 001B Practical at Cherry Gardens, 20-21 March, Theory course members get preference

Any of the Clubs Trainers please consider doing this course.

Assessor Course: 22-23 May & 5-6 June & 19-20 June 2010

This is for any of our clubs Advisors.

Trainer Course: 17-18 April & 1-2 May 2010

Morgan is a great location and not too far.

Anyone wanting 001B items Trained or Assessed this is for you.

Club Training - 001B Practical at Morgan, 8th - 9th May 2010

This one is for DTU members only eg Advisors, Trainers & Assessors.

DTU Professional Development / Advanced Assessment at Kuito, 7 - 8 August 2010 (DTU Members only)

MLR Club member training open to all MLR club members with training books.

Limited spots available depending on number of Trainers & Assessors available.

Weekend of the 27 or 28 March - Morgan.

Sun 11 April.- Deep Creek inclines etc then to Goolwa beach for sand driving and some recoveries.

Sat 22nd May somewhere local to do stuff like pre departure checks, Changing a wheel, puncture repairs etc.

Email Paul Tabone if you would like to attend any of the above.
I will need your full name and return phone number and email

Thanks
Paul Tabone.

NEED & NEED

CHARTERED ACCOUNTANTS

Our Services Include:

Accounting & Taxation, GST,
Business Advisory & Management Consulting,
Audit, Business & Estate Planning,
Statutory Record Keeping,
Investment/Retirement/Superannuation,
Computer Advisory & Processing

See Craig Need Ph. 0438-297-447

9a Anzac Highway, Keswick, South Australia, 5035

Phone: (08) 8297-4477 Fax: (08) 8297-9989 email: craig@need.com.au

Proud sponsor of the Mount Lofty Rangers Magazine

I GOT WIRED

@

Belair Road Auto Electrical

59 Belair Road
Kingswood SA 5062



Phone: 08 8271 7617

Prop: Tim Byrne

Repairs To: Motor Vehicle Electrical and Electronic Fuel Injection Systems

Air-conditioning Servicing

Bosch Electronic Tuning

RAA/Bosch Battery Sales

4x4 Accessories –sales and fitting

59 Belair Road, Kingswood 5062

Phone 8271 7617 Fax 8272 8510

E-mail: brae59@internode.on.net

Proud sponsor of the Mount Lofty Rangers Magazine

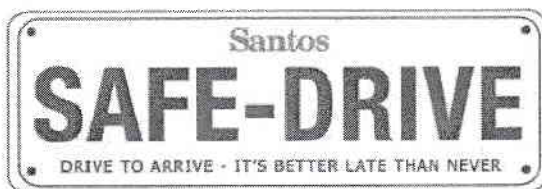
SAFETY ALERT

Sandhill Crests - Danger

Many field roads have restricted vision crests over sandhills and these present a significant risk

- Expect the unexpected over sandhills crests.
- Ask yourself – what could be over that crest?
- When approaching the crest of sand dunes stay as far left of centre as safely possible to reduce potential collisions.
- Reduce speed.
- Look for dust clouds that may indicate oncoming traffic.
- Ensure you have a dune pole fitted.

So please, all drivers take care, be patient and remember.....



If we all work together we will achieve our vision that
"We all go home from work without injury or illness"

Prepared By	EHS Coordinator	Approved By:	Manager EHS&S
Date Issued:	24 March 2010	Remove From Notice Boards	24 June 2010

ENVHS P026

Visit the Bulletins intranet site on The Well.





4X4 ACCESSORIES



ACCESSORIES SALES AND FITTING SERVICE

- | | | |
|-------------------------|--------------------------|-------------------|
| 1 Dual Batteries | 1 Air Compressors | 1 Fridges |
| 1 Side Steps | 1 Driving Lights | 1 Snorkels |
| 1 Roof Racks | 1 Storage Systems | 1 Cargo Barriers |
| 1 Bullbars, | 1 Staun | 1 Polyair Springs |
| 1 Warn Winches | 1 Wheel Carriers | 1 Fuel Tanks |
| 1 Canopies | 1 Recovery Equipment | |
| 1 Air Locking Diffs | 1 Old Man Emu Suspension | |
| 1 UHF Radios & Antennas | | |

*****CLUB DISCOUNTS AVAILABLE TO ALL MEMBERS*****

*****CONTACT GLENN BULL FOR FULL DETAILS*****



**Mount Barker
4x4 Centre**

PH (08) 8391 4391

Shop 10/4 Dutton Road

Mount Barker SA 5251



MOUNT LOFTY RANGERS 4WD CLUB



GENERAL MERCHANDISE RANGE

Cloth Badges	\$7.00
Car Stickers	\$2.50
Name Badges	
Initial 2 on joining	FREE
Additional	\$6.00
Replacement	\$6.00
Sand Flags	\$2.50
Tyre Plugs	\$7.50

Please see Les Toomer (0409 285 232) for clothing or other purchases

ITEMS FOR LOAN

Crate Mate Recovery Tracks	Recovery Kit
Club Banner	Tirfor Winch
Club Flag	Puncture Repair Kit *
Exhaust Jack	First Aid Kit *
Maps	4 x Lightweight Shelters with sides.

** Please replace used items*

Please see Mark Curtis for any items you wish to borrow Ph 8358 4776

MOUNT LOFTY RANGERS 4WD CLUB



MERCHANDISE APPAREL RANGE

Sizes available for the clothing range are S, M, L,
XL, XXL & XXXL

So let's get out there and support & promote our

see Andrew Thomas 0408 854 694

Bulk orders placed in Feb, May, Aug & Nov or/if when minimum orders quantities are met
All items to be paid in full when placing order. Add \$5 per item for name embroidery.

HATS

with club logo embroidered



Baseball Cap
\$17



Bucket Cap
\$15



Beanie
\$15

SHIRTS

with club logo embroidered



Polo Shirt
With pocket \$37
Without pocket \$35



Chambray Shirt \$45
Mens and Ladies
Full, short or 3/4 sleeves

COOLER

with club logo printed



Stubby Holder
\$5

JUMPERS

with club logo embroidered



Windcheater
\$50
Rangers Review



Arctic Top
1/3 or full zip \$50



Winter Jacket
\$85

Your Committee

✓ PRESIDENT

Andrew
Thomas



0408 854 694

Andrew.thomas@hills.com.au

VICE PRESIDENT

Graham
Jones



0419 851 040

✓ SECRETARY &
PUBLIC OFFICER

Pat
O'Kane



0408 775 969

✓ TREASURER

✗ Paul
McGregor



0408 900 889



ASSOCIATION
DELEGATE

Richard
Williams
12. 13.



0437 734 670



MEMBERSHIP
OFFICER

Jim Usher

0432 043 715



TRIPS
CO-ORDINATOR

Luke Hooper



0406 881 321

lwjhooper@gmail.com

✗ EDUCATION
OFFICER

Paul Tabone



0417 080 663

✓✓ PROPERTY
OFFICER

Mark
Curtis



0408 297 065

✓ MAGAZINE
EDITOR

✗ Neil
Cook



0400 416 220

nlhcook@adam.com.au

✓ INSURANCE
OFFICER

✗ Ken
Bradey



0418 807 934

Paul
McGregor



0408 900 889

✗ WEBSITE

paulm@totalimage.net.au

✗ SOCIAL
SECRETARY

Matt Eastmure



0433 561 395

Dave 'Shorty' Willsmore

0412 411 751

✓ MERCHANDISE
OFFICER

✗ Les Toomer



0409 285 232

TRIP LEADERS CHECKLIST

PRE-PLANNING

Choose a location for the club trip

Choose a date - start & finish

Choose a route - there & back

Accommodation - caravan, camper trailer or tents only

Cost of camping, track access or other costs

Determine difficulty of the trip

Determine vehicle suitability, requirements & convoy limit

Work out an estimate of the trip distance

AT A CLUB MEETING

With all your pre-planning information at hand approach the trips coordinator

Discuss & seek feedback on your trip details & amend if necessary

Ask if anyone else within the club has done the same trip for any advice or suggestions

Fill out a trip sheet & post on the trips board

Within the club meeting, stand up & introduce yourself

Explain all the details of your proposed trip as outlined in the pre-planning stage

Answer any questions if needed

During the next subsequent meetings keep up to date with progress of names listed on your trip

IN THE MEANWHILE FINALISE DETAILS FOR YOUR TRIP

A start meeting point & time for your trip, there can be multiple places to meet when on route

Finalise any personal, camping, safety & recovery equipment required for the trip as a minimum

Determine if there is any First Aiders, club trainers or assessors on your trip

Amount of fuel stops & fill up locations whilst driving

Notify & book in your trip with any relevant landowners, caravan parks, national parks etc

Assess & check any possible weather conditions you may encounter whilst on your trip

Leave details of your trip with the trips coordinator - itinery, route & planned return time

Determine all the water & food requirements of the trip - are there any group cooked meals ?

THE LAST CLUB MEETING BEFORE YOUR TRIP

Gather together the members of your trip into a small group & finalise any details of the trip

Confirm all names & numbers of persons attending

Gather all participants trip application forms

Determine if there are any special needs or medical requirements of the participants

Collect any money or fees if it is required

THE FIRST DAY OF YOUR TRIP

Arrive first at the chosen meeting place & time

Once all intended persons have arrived, introduce yourself & anyone travelling with you & call sign

Get everyone else to introduce themselves, people travelling with them, call sign & type of vehicle driven

Make sure everyone is aware of your mobile phone number in case of an emergency

Make everyone aware of the nominated first aider

Discuss convoy procedures, marking of corners & making sure they can see the vehicle behind them

Remind everyone of UHF radio use, etiquette & rules. No swearing / bad language etc

THINGS TO DO THROUGHOUT EACH DAY OF YOUR TRIP

At the start of each day or each individual section of the drive appoint a Tail End Charlie

Nominate a person to write the trip report for that day

Perform regular radio checks of all vehicles in your convoy

Make yourself available to everyone if there are any grievances or conflicts on the trip

CLUB BY-LAWS & RULES FOR TRIPS & ACTIVITIES

As extracted from the Club's Constitutional Document

CLUB ACTIVITIES

For the purposes of these by-laws & rules, only those activities that have been approved by the Directors or at a General Meeting & noted in the minutes shall be recognised as official Club activities. Any activity not so approved shall be considered as a member's private activity & shall only be discussed at General Meetings during general business, if time permits.

REGULATIONS

All members & visitors shall at all times abide by the Club Constitution, these by-laws, rules & regulations laid down by Government Authorities & owners/lessees of private property.

CLUB IDENTIFICATION

All club identification shall be removed from vehicles prior to sale or upon expiration of membership.

RADIOS

Members using CB, UHF & HF radios shall use them at all times in accordance with State &/or Federal Government rules & regulations governing the use of radios.

All members shall install 27 Meg (AM) or UHF radios for all club trips within 6 months of joining the club.

VEHICLE INSURANCE

All participants in Club activities are required to produce to Directors a written declaration stating that they have in force, and will have in force for the duration of the club's financial year, a current policy of Comprehensive or 3rd Party Insurance applicable to the vehicle they are driving, upon renewal of such participants' membership with the club.

CONDUCT OF ACTIVITIES

Direction of Organisers

All members & visitors participating in a club activity at all times shall abide by the directions of the activity organizer or trip leader in respect to:

- i. Compliance with Club by-laws & rules

- ii. Safety of all other members
- iii. Fire precautions & restrictions
- jjj. Care & respect of private property
- kkk. The rights of other people

Trip Leaders

On trips, the Trip Leader has absolute authority over the whole trip & they must ensure that members & visitors are aware of all relevant Club by-laws & rules & have adequate recovery equipment.

Assistant Trip Leader

Trip Leaders at their discretion may appoint separate trip leaders to lead separate convoys.

Contravention of Club by-laws & Rules

A member contravening Club by-laws or rules may be asked by the trip leader to leave the activity or trip & the incident reported to the Committee. Disregard of club by-laws & rules should be reported to the Committee members by the club members. All members must inform the Trip Leaders of their intention to go on a club trip.

National Parks & Forest Areas

All members & visitors are responsible for knowing & observing Park, Woods and Forest regulations whilst traveling in these areas, or in other areas controlled by Government Authorities.

Conclusion of Trips

Trip Leaders must ensure that all participants have clear directions to their destination at the conclusion of the club trip.

Children

Adults must be responsible at all times for the behavior of the children in their charge.

Prospective Members

Prospective members & visitors are allowed on Club activities at the discretion of the activity organiser but not to the exclusion of club members.

Non Financial Members

Persons previously on the club committee but who are currently not financial, or other persons, who are not financial, are not allowed to take part in club activities with our prior Committee approval.

Numbers of vehicles

The number of vehicles on a Club activity shall be determined by the trip leader but also may be subject to requirements of outside authorities. As a general rule the number of vehicles in a convoy shall not exceed 15 as the sight & inconvenience to other members of the public must be considered.

Dogs

On trips where dogs are permitted, they must be kept under control at all times, preferably on a lead.

Motorcycles

Motorcycles are not permitted on Club trips except with the express permission of the trip leader.

Firearm

Guns & rifles must not be visible inside vehicles & should only be removed in cases of emergency, or with the express permission of the trip leader.

Intoxicating Liquor

Excessive consumption of intoxicating liquor on club activities is discouraged.

Off Tracks

Vehicles are to stay on existing roads & tracks except in areas where permission has been granted to move away from existing vehicle corridors.

Flora & Fauna

Live branches are not to be broken from trees or shrubs. No member shall use a tree as an anchor for winching without providing adequate protection around the tree from slings or cables. Trip members must not disturb birds, animals & their habitat.

Gates

All gates must be left as they were found.

Camping

Campsites must not be within 500m of any artificial constructed watering points. Campsite adjacent to large natural watering points must be sited so that stock & wildlife are not prevented from gaining access to water. Campsite must be at least 1km away from any station homestead, shearing shed, outstation or other improvement unless prior approval of the land manager. Previous campsites should be used wherever possible. Care must be taken to minimize damage to vegetation etc at campsites & making of unnecessary vehicle tracks is to be avoided.

Water

Minimal water only is to be taken from any watering point. Members are not to swim or bathe in tanks or dams without permission from the land manager. If water is required for washing it is to be bucketed out. Soaps & detergents etc are not to be introduced into tanks, dams, rivers or natural watering points.

Litter

No litter or rubbish is to be thrown from vehicles. At all stops, members shall ensure that no rubbish is left at the site. All non-burnable rubbish is to be carried out & disposed of in approved receptacles or areas. Burnable rubbish may be burnt at campsites provided all other members are considered, correct precautions are taken & there are no fire bans in place. Non-combustibles are to be removed from ashes.

Historical Sites

All sites of historical significance are to be left undisturbed & artifacts are not to be removed off site.

Toilets

When using bush toilets ensure an adequate, deep hole is dug & covered properly before leaving the campsite. Do not allow paper & tissue to blow around the area.

Mobile Generators

The use of generators must be kept to a minimum & not used after 8.00pm or before 7.00am without the permission from everyone within the vicinity. At all times other travelers must be considered when using generators. Members must ensure as far as possible that generators are permitted in NPWS areas prior to departures or obtain permission from rangers at the site.

Fires

Fire bans must be complied with at all times. Normally one campfire should be adequate and the trip leader is responsible for its location. The trip leader may approve other small cooking fires. At sites where adequate supply of dead wood on the ground is not available (especially National Parks etc) or during potential fire danger periods members are encouraged to use gas or other means for cooking. All fires must be extinguished before the site is vacated, ashes disposed of, and where practical, no signs of the fire should be left at the site.

Spares

Vehicles must carry enough spare to be reasonably self sufficient in the event of breakdown. Spares for similar type vehicles can be shared amongst those on the trip. The specific spares would depend on the type of trip & location and agreement between participants.

Grievances

Any grievance arising from any club activity must be made as soon as possible (preferably in writing) to the organisers of that activity or Directors so that any problems can be resolved promptly.