



Rangers' Review

Volume 13 No.2

Mount Lofty Rangers Inc.

PO Box 1150, Blackwood SA 5051

www.mountloftyrangers.com.au

June 2007



Stuck fast on Yorke Peninsula Trip

TABLE OF CONTENTS

President's Report.....	3
Trip Reports.....	6,12,27,32
Upcoming Trips.....	14-17
Social Events.....	19
Recipes.....	34
Trading Mart.....	37

Mount Lofty Rangers Inc.

About Us

The clubs aim is to enjoy all aspects of owning and using our 4WD's while enjoying the diverse surroundings offered by this great country. We are a club of 4WD enthusiasts who enjoy challenging driving, regular trips, camping, camp cooks and a great social scene on and off track.

Membership

Membership is open to anyone who owns a 4WD regardless of its make or model and has a passion for driving. Mount Lofty Rangers Inc is an affiliated member of the SA Association of 4WD Clubs.

Club Outings

The Mount Lofty Rangers provides regular day, weekend and extended four wheel drive trips, lead by experienced trip leaders. Trips are rated on the level of difficulty and are available to all members and guests.

The club has a dedicated social committee who also organises regular events that compliment the club trips.

Experience and Training

Our current members possess a wide range of skills ranging from beginner to advanced. The club has a number of accredited instructors and assessors, and is involved in regular training via the SAAFWDC Driver Training Unit.

Meetings

Club meetings are the second Monday of each month* and are held at the

Blackwood Football Club

Trevor Terrace

Blackwood

Time 7:15 pm

*Except where this Monday falls on a long weekend then the meeting is held on the 3rd Monday of the month

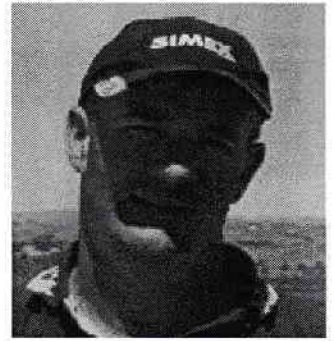
Information

For more information on the Club please check out our website at:

www.mountloftyrangers.com.au

MT LOFTY RANGERS UHF CLUB CHANNEL NO 27

"Shorty's Presidential Report"



Hi all,

As I sit here and type this report, I have been thinking how long it's been since I have been on a trip. I think the last trip I went on was to the Pyrenees at Easter. You may be surprised, as I have been very busy with work & doing jobs at home. So I am really looking forward to going away at the end of June to Peake for the weekend. If members could please bring some small firewood to get the fire going I will bring along some larger logs to keep fire going thru the night. Quite a few of us are going up on Friday night so if you would like to join us see Paul Tabone or myself.

The new committee has been busy getting things organized for the year. Lots of social trips as you will see in this magazine. I hope that a lot of you will attend these functions as they are great events to go on. So get your name up on the trip sheets, you won't be disappointed.

There are various trips going up on the trips board, some overnight trips & training events coming up in the next few months. If you are interested in trips to the Flinders Ranges there will be two trips on the October long weekend. They are going up now to give you plenty of notice. So get your name down on the trip sheet before you miss out as trip numbers will be adhered to.

There also will be trip put up to Port Pire on August 11th. The FWDSA is having a regional meeting up there. There will be a tour of the Bridal track on the Saturday 11am and the meeting in the afternoon at 3pm proceeded by a BBQ Dinner put on by the Assoc. Quite a few of the committee members are going to attend. We will probably stay the night at Crystal Brook or Melrose. So if you would like to attend put your name down on the trip sheet. Put all these together with the social events it's going to be a very busy couple of months.

Tim Byrne has contacted St Johns about First Aid courses and 2 dates will go up on the trips board for July & Sept. It is a Senior First Aid Certificate and will be done over a weekend. It is fairly important that members of the club do these courses as most of us go on trips, some of them can be to quite remote places and you never know what can happen. It would be great if there were First Aiders on each trip. I will definitely be putting my name down.

See you on a trip.

Dave Willsmore (Shorty)

Rangers Review

Page 3

Southern Vales 4WD



Ian Richardson

Serious 4wd Equipment

4WD MEGASTORES
Everywhere
Where your journey begins

**88 Main South Road
REYNELLA SA 5161**

Ph: 8381 8300

Fax: 8381 8600

Mbl: 0414 322737

We supply and install:

Bull bars & Nudge Bars	Winches	Side steps and rails
Driving Lights	Suspension	Waeco Fridge/Freezers
Recovery Equipment	Canopies	Fan Belt & Radiator Hose Kits
Roof Racks	Tow Bars	Rear Wheel Carriers
Roof Consoles	Diff Locks	Compressors
Roller Draws Systems	Snorkels	Michelle's Sacs 4X4 Products
Flexi tanks (Water)	Dashmats	Black Duck Seat Covers
Headlight Covers	Staun Products	Luggage Trays & Capsules
Primus Hot Shower	UHF Radios	Paint Protection (Paint on)
Airbag Suspension	DP Chip	EPRS Rust Prevention
SHOO ROO Products	Smartbar	Maps, DVDs, Books
Plasti- Dip	Auto Skin	Plus other Brands & Accessories

Black Widow
4WD STORAGE SYSTEMS



RHINO-RACK
Aerodynamics & Heavy Duty Roof Rack Systems
SMART BAR

POLYAIR
springs

ECB
EAST COAST BUILDERS
WINDSHIELD
Automotive Protection Equipment and Accessories

EFS
ENHANCED 4WD SUSPENSION

FLEXIGLASS *Challenge*
4X4 ACCESSORIES



THE WORLD LEADER
Kaymar
4x4 ROOF END 4WD ACCESSORIES

SAFARI
SNORKEL



WAEKO
mobile solutions



SHIMANO
NEW EMERGENCY RELEASE SUPPLY SYSTEM

michelle's sacs
Privacy, Protection



T-MAX
MAXIMUM OFF ROAD RECOVERY



LA
ROOF RACKS

D CHIP
OFFROAD

Supplying the South with its 4WD needs

Auto Skin

Simply Paint On & Peel Off

AutoSKIN is a water-based peelable coating product used for the temporary protection of motor-vehicle paintwork, mouldings, and stainless or aluminium accessories.

AutoSKIN protects against damage from:

- Branch Scratches
- Bug Splatters
- UV Damage / Fading
- Stone Chips
- Bird, Bat, Bug Droppings
- Pollution
- Dirt and Dust
- Tree Sap
- Grease & Grime

Originally developed for use in the commercial sector protecting motor-vehicle paintwork during transit, AutoSKIN was modified to be used by anyone to aid in the prevention of branch scratches when 4WD driving and stone chips when on road trips, amongst many other uses.

AutoSKIN coverage varies according to use

Use	Coverage	Recommended Purchase
All 4WD's	1.0 to 1.5 litres for sides	1 litre minimum (sides only)
	1.5 to 2.0 litres for sides and front	4 Litres typical (two uses)

AutoSKIN is a revolutionary NEW PRODUCT by PAW Industries developed using the paint-on peel-off technology of its award winning temporary protection for windows during construction product – PAW55

Approved surfaces that AutoSKIN can protect

- Most motor-vehicle paintwork (vehicles over 10 years old should be tested)
- Plastic Mouldings
- Rubbers (dense solid type only)
- Stainless Steel
- Coated Aluminium
- Glass
-

Testing on a small inconspicuous area when uncertain is recommended

Available from



**Southern
Vales 4WD**

Ph:8381 8300



Googs Track Trip

Day one Saturday 21st April

Paul West

Ten vehicles met at McDonalds, Port Augusta at 9am. After little expeditions to the local bakery etc. we formed our convoy on the Whyalla Road and headed off at 9.45 am. Trip leader – Paul Tabone

(RAINMAKER) with Annette, Jordan and Kyah and their camper trailer. Followed by Trevor and son Brendan, Mark and Linda, Glen and son Daniel, Mark Curtis and co-pilot Merv Tucker, Hubert and Lyn, Peter and Jenny, Murray and Joan and ourselves, Paul and Bev.

The plan was to stop at Kimba and visit the Big Galah which is on the highway, however a few took the scenic tour. I think we used up our quota of U – turns following Zulu who was apparently trying to find the toilet which ended up being located across from the Big Galah! While in Kimba some of us saw a group of ‘bikers’ shepherded through the town with their Police escort. We left Kimba via Whites Knob Lookout and the Buckleboo Road (eventually, after some confusion) and headed towards Buckleboo. After about 40 kms we turned left into Woolford Road and headed west towards Wudinna.. Our intention was to turn off and head southwest down the Buckleboo Stock Route.

However we were enjoying the challenges of the sand driving on Woolford Rd and kept following it to Wudinna.. The sand was quite deep and soft in sections and overall it was a great drive. It would have been a big challenge if we hadn’t had the rains a few weeks before!

At Wudinna the cars fuelled up and the ladies used the last flushing toilet for a few days. Mark and Linda were waiting for us – they had stayed back in Kimba to get a fuel problem fixed. As it turned out both Mark and Paul West had picked up some water contaminated fuel at the same pump in

Pt Augusta. Paul’s problem came later in the day but was fixed by draining the fuel filter. Paul and Mark also had uhf radio problems caused by faulty aerial to cable connections.

We headed towards the Gawler Ranges and Waganny Campground collecting firewood along the way, arriving at 4.30pm. It was a very nice campsite except for the ant hills dotted all around. Eventually we managed to avoid them and pitch our tents. This was to be our campsite for two nights.

As we sat around the campfire that night, little did we know that this trip was going to have all the elements of a great club trip! Great destinations, friendships and help when we needed it, great weather (until Wednesday), spectacular scenery, plenty of sand and mud driving and a lot of laughs!

Thanks Crooza for organising the trip and the rain!!!!!!

Our photographs and memories will be around for a long time!

This is the first day of the trip from last magazine!



Patron: Anne Beadell

Code of Conduct – Off road driving

1. Obey the laws and regulations for Recreational Vehicles that apply to public lands.
2. Respect the cultural, heritage and environmental values of public/private land,
By obeying restrictions that may apply.
3. Respect our flora and fauna. Stop and look, but never disturb.
4. Keep to formed vehicle tracks.
5. Keep the environment clean. Carry your own, and any other, rubbish out.
- 6 Keep your vehicle mechanically sound and clean to reduce the environmental impact.
7. Adopt minimal impact camping and driving practices.
- 8 Seek permission before driving on private land. Do not disturb livestock or
Watering points, leave gates as found.
9. Take adequate water, food, fuel, basic spares and a first aid kit on trips. In remote
areas travel with another vehicle and have Royal Flying Doctor Service, or
equivalent, radio contact.
10. Enjoy your recreation and respect the rights of others.
11. Plan ahead and lodge trip details with a responsible person.
12. Support four-wheel drive touring as a responsible and legitimate family recreational
activity. Consider joining an affiliated four-wheel drive Club.

THIS CODE SUPPORTS THE NATIONAL RECREATIONAL FOUR WHEEL DRIVE VEHICLE POLICY.

Produced by the ANFWDC in the interest of promoting responsible recreational vehicle use.

For advice and assistance in meeting the requirements of this Code of Conduct contact the
Public Relations Officer, ANFWDC PO Box 79, CANBERRA ACT 2601

□ Australian National Four Wheel Drive Council, June 2005

Adventure OFFROAD CAMPERS

CAMPER TRAILERS & TRAY TOP CAMPERS

100 Daws Rd Edwardstown S.Aust 5039

Ph 08 8276 5666 – Mob 0417 080 663

Email – info@adventurecampers.com.au

SALES & HIRE

Made in AUSTRALIA



With 4 models and a host of options there is an Adventure to suit everyone.

Special offer to all 4WD club members

Have our 90 minute DVD posted to your door for only \$5.00 incl postage
Just call Paul on ph 08 8276 5666

Also visit our excellent website:
www.adventurecampers.com.au



ENGEL

'Winter Fully Equipped Promotion'

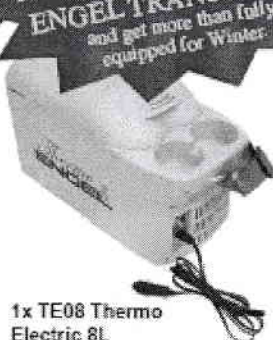
Purchase any MT-Series Engel portable fridge-freezer during June, July and August 2007 and receive over \$285 RRP worth of Engel products*

**ASK FOR A
SPECIAL PRICE ON
A MATCHING GENUINE
ENGEL TRANSIT BAG!**
*and get more than fully
equipped for Winter.*

**Absolutely
Free!**



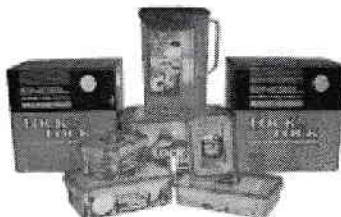
*The ENGEL 'Winter Fully
Equipped Promotion' includes:*



**1x TE08 Thermo
Electric 8L**
Value: \$99 RRP



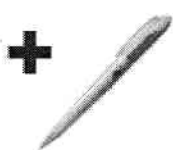
1x Engel Lamp
Value: \$54.95 RRP



1x Discovery Pack
Value: \$65 RRP



1x Engel Thermometer
Value: \$29.95 RRP



1x Engel Pen
Value: \$10 RRP



2x Engel Stubby Holders
Value: \$18 RRP



2x Engel Baseball Caps
Value: \$12 RRP

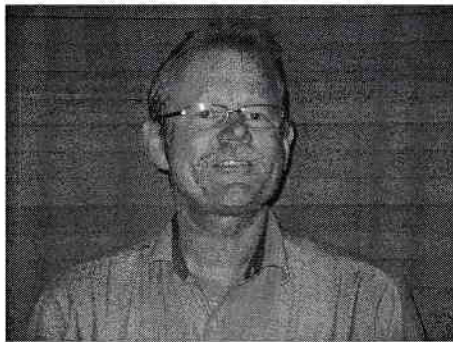
** While Stocks Last. Engel reserve the right to substitute products with those of similar value if the need arises.*



**For your nearest stockist or to view the entire
range of Engel fridge-freezers and accessories call
1300 302 653 or visit www.engelaustralia.com.au**



Member Profile



Full Name: Frank Aschmoneit

Nick Name: Grumpy

Call sign: ?

Motto: Don't drive past a bakery

Occupation: Service Technician of Portable Fire Extinguishers

Family: Wife – Debbie

Daughter – Lisa

Son – Luke, Partner Zoe & Grand Daughter Ellie

Vehicle: 2003 Toyota Hi_Lux SR5 Dual Cab 3l TD

Modifications: Lots

First 4wd Owned: - 1976 Ugly Duckling Subaru Wagon

Ultimate 4WD: Unimog

Favourite Holiday Spot: Victorian High Country

Other Interests: Tinkering with my Truck, V8 Touring Cars

Favourite Food: Cheese

Favourite Drink: Coopers Pale Ale

Ultimate Goal: Early Retirement / more Get Aways

NEED & NEED

CHARTERED ACCOUNTANTS

Our Services Include:

Accounting & Taxation, GST,
Business Advisory & Management Consulting,
Audit, Business & Estate Planning,
Statutory Record Keeping,
Investment/Retirement/Superannuation,
Computer Advisory & Processing

See Craig Need Ph. **0438-297-447**

9a Anzac Highway, Keswick, South Australia, 5035

Phone: (08) 8297-4477 Fax: (08) 8297-9989 email: need@camtech.net.au

Proud sponsor of the Mount Lofty Rangers Magazine

Belair Road Auto Electrical

Prop: Tim Byrne

Repairs To: Motor Vehicle Electrical and
Electronic Fuel Injection Systems

- Air-conditioning Servicing
- Bosch Electronic Tuning
- RAA/Bosch Battery Sales
- 4x4 Accessories –sales and fitting

59 Belair Road, Kingswood 5062

Phone 8271 7617 Fax 8272 8510

E-mail: brae@bigbutton.com.au

Proud sponsor of the Mount Lofty Rangers Magazine

Yorke Peninsula 4wd drive trip

Most of the Mount Lofty Rangers left Friday night heading to Port Victoria after arriving at Port Wakefield at 7:15pm for a bite to eat. There was little confusion on which way to get to Port Victoria but soon after everyone trusted Paul in his navigation skills and sure enough we arrived in no time.

The Yorke Peninsular Club consisting of about five vehicles had already set up the camp site once we got to Port Victoria. Everyone had their camper trailers set up within minutes, however dad (Wayne) and I took about an hour or longer to figure out the tent in the dark.

The next morning the group started off exploring the sand hills around the camp site area, before our guide “Steve” from the Yorke Peninsular 4WD Club headed us up onto the sand heading south.

It wasn’t too long before the sand took its first vehicle and that was the 4runner, stuck down to the chassis it needed a winch from the safety of hard sand to ready to push on.

The beach driving was fairly easy going however the amount of seaweed seemed to gradually be getting more and more, in some sections it basically engulfed the entire beach. Seaweed driving was a new experience for me, it seems you never can really tell whether the next few meters will sink your vehicle or let you pass.

We ended up in Port Rickaby where we stopped for an ice cream and to decide the next path to take back north. Port Rickaby seems like a nice little place consisting of about 3 houses and a camping ground, okay maybe there is 4 houses.

On our travels back to camp (I have no real idea where we were I was just following whoever was in front of me, mostly it was Skippy who wasn’t pulling his weight taking out the branches for me) we came across a few bigger sand dunes, and by bigger I mean a lot bigger than the ones we were playing on at camp. I think dad (Wayne) was the only one to make it to the top with his unique approach to most 4wd obstacles, more speed. However he did manage to make himself bogged at the top when he realized the other side was nearly as big a drop as the front side to go up haha. Lucky Paul could get his truck close enough to pull him back down.

We got back to camp, even used the camp oven we remembered to bring this time and most people went about cooking dinner except Paul who just reheated old food ha,ha

The night was spent talking shit by the fire, drinking and eating it was a lot of fun. Sunday began with old mate Steve taking us in the opposite direction as Saturday so by my calculations that was north, up to somewhere called Cape Elizabeth. The driving was much the same as the day before but I must give a mention to Steve our guide getting bogged, and then 'diesel n dust' getting bogged, who went to rescue him. That seaweed can be very deceiving.

We eventually came to an old shack that looks a good place to come back to fish, ask Skippy where it is im pretty sure he has it marked. From there the group split in two, those headed back to camp with intensions of going back to sand dunes and those headed back to civilization as it was already getting on.

For those who went back to camp, by the time we got there it was too late to go looking for the dunes so we all packed up and headed home.

It was a good weekend and thanks to the Yorke Peninsular 4WD club for showing us around.
I'm sure all those who went had a good time.
I know I always enjoy getting out.



Upcoming Trips

Summary of up coming trips:

When putting your name down for a trip you **MUST** include your contact number

Peake. 23-24 June.

Painted Desert. July 07 **TRIP FULL**

Port Pirie – with Southern Flinders 4wd club. 11–12 August

Morgan – Advanced training. 25-26 August

Allawoona – North of Lameroo 15-16 Sept

Flinders Rangers. 29 Sept – 1 Oct. October long weekend.

Social – Kuitpo camp cook weekend 20-21 October.

**We need more trip leaders for day or weekend trips
in July, August and September.**

NOTE:: With the clubs recent growth trips are filling fast and you will see more trips FULL so if you are keen get your names on the trip sheets.

Trip	Peake
Date/s – Duration	Saturday 23 June to Sunday 24 June
Trip Leader	Ken Brady Contact No : 0418 807 934
Convoy limit	Unlimited
Distance – Kms	Adelaide CBD to Peake 145kms.
Departure / meeting point & time	6.30pm Friday at the pub for a meal OR 9am Sat morning at Peake Post Office
Radio	UHF 27 – Club channel
RSVP – deposit	\$15 Per vehicle per day payable at camp
Special requirements	Bush camping –Camper trailers & caravans okay –
General comments Peake gate :WGS84 – S35 20'38.4 E139 57'40.0 Peake camp: S35 20'35.6 E139 58'55.9	Some training may be available – Bring sand flag – compressor - firewood – minimum recovery equipment is 1 snatch strap – If you have not been to Peake before make the effort as it is a great place to practice some sand driving.

Upcoming Trips

Trip	Painted desert Oodnadatta Track
Date/s – Duration	July 07
Trip Leader	Pat O’Kane 0408 775 969
Convoy limit	Trip FULL
Distance – Kms	
Departure / meeting point & time	
Radio	UHF 27 – Club channel
RSVP – deposit	Required by
Special requirements	See Pat
General comments	Have good tyres. Bush tyres are expensive.

Trip	Port Pirie with Southern Flinders 4wd Club.
Date/s – Duration	11 & 12 August
Trip Leader	David Willsmore AKA – Shorty or Pres.
Convoy limit	Unlimited
Distance – Kms	Not many
Departure / meeting point & time	See TL.
Radio	UHF 27 – Club channel
RSVP – deposit	Required by
Special requirements	Need to arrange own accommodation. See info sheet on trips board.
General comments	Have good tyres. Bush tyres are expensive.

Upcoming Trips

Trip	Morgan
Date/s – Duration	25&26 August
Trip Leader	Jeff Morgan
Convoy limit	Unlimited
Distance – Kms	Approx 160kkms to Morgan
Departure / meeting point & time	Morgan Caravan Park down by river front
Radio	UHF 27 – Club channel
RSVP – deposit	Required by
Special requirements	Advanced training 002 - 003
General comments	Park fees payable. Can have a meal in the pub.

Trip	Tamarisk – Allawoona – Mallee North of Lameroo
Date/s – Duration	15-16 Sept
Trip Leader	Merv Tucker
Convoy limit	Approx 15
Distance – Kms	Not sure when Merv is TL J
Departure / meeting point & time	Tailem bend 9AM SHARP.
Radio	UHF 27 – Club channel
RSVP – deposit	Required by
Special requirements	Camper trailers at own risk must be capable offroad and prepared for anything.
General comments	Have good tyres. Bush tyres are expensive.

Upcoming Trips

Trip	Flinders Rangers.
Date/s – Duration	29 Sept – 1 Oct. Long weekend.
Trip Leader	Donald Ward
Convoy limit	Unlimited
Distance – Kms	Approx a few?
Departure / meeting point & time	See info sheet.
Radio	UHF 27 – Club channel
RSVP – deposit	Required by
Special requirements	See Donald
General comments	Have good tyres. Bush tyres are expensive.

Southern Flinders 4WD Club Inc

Southern Flinders invite Northern Clubs and Executives to the 4WDSA Delegates Regional meeting to be held in Port Pirie on Saturday August 11th, 2007.

The regional meeting will be held in our Club rooms on Gertrude Street at 3.00 pm.

This will be preceded by a tour along the Bridal track starting at 11.00 am.
(Weather permitting)

After the meeting a BBQ will be put on for the delegates and friends attending.

Those intending to stay overnight are asked to make their own arrangements with one of our caravan parks or hotels.

Please advise us before hand of numbers attending (for catering purposes)

0438 863 327 or P O Box 1140 Port Pirie 5540

First Aid Course

Saturday & Sunday Course
Practical and Theory components

1st Choice28th and the 29th of July

2nd Choice22nd and the 23rd of September

.....ONLY 15 PLACES EACH WEEKEND.....

Bulk price discount \$120 per person

Please list yourselves on available weekends

One course could be cancelled if numbers don't add up

We need exactly 15 people to run **NO MORE NO LESS**

This way , we should be guaranteed to fill the classes

Paul Tabone just attended a work place senior 1st Aid course @ \$170 per person

Payment of \$120 per person **NO REFUND**

will be required at next meeting to secure position.

Transfer of people that have payed and cant attend , is OK.

We also believe that the DTU will probably make it mandatory to have a First Aid officer on every trip.

You should all consider this course not only for club trips, but to have that knowledge when you do those trips on your own.

Venue and Biscuits, tea, coffee will be Free Of Charge normally \$55

Regards Sparky

SOCIAL SCENE

BOWLING & DINNER – Saturday 23rd May 2007

Come & join us for a fun afternoon of bowling & then dinner after. Meet at Bowland Marion at 4.45pm. Look for Jo Reed when you get there and she will advise us the details for the afternoon. It will cost \$9.00 per person. We will then go to the Flagstaff Hotel Darlington, for dinner at 7.30pm. Don't forget to put your name on the list if you are going to attend.

MID YEAR DINNER – 17th August 2007

TAFE COLLEGE Restaurant MARTINHAS

Level 3 West Wing 120 Currie Street Adelaide Cost \$30.00 per head
3 Course Options Entree / Main and Dessert 2 Choices per course.
Room only booked for 40 people so be quick.

CAMP COOK WEEKEND – 19th & 20th October

This popular annual event will be on again at Jack's Paddock, Kuitpo.
Mark your diaries now & more information will follow.

SUNDAY 16TH SEPTEMBER

Steam ranger Train Trip Details on the board.

OTHER SOCIAL ACTIVITIES

We are in the early stages of organising the following events;
more details will follow in future magazines.

- On the evening of Saturday 17th November some fun at a Quiz Night.

As we have done in previous years at the December meeting which will be on Monday 10th December with our Christmas BBQ where Santa will also visit.

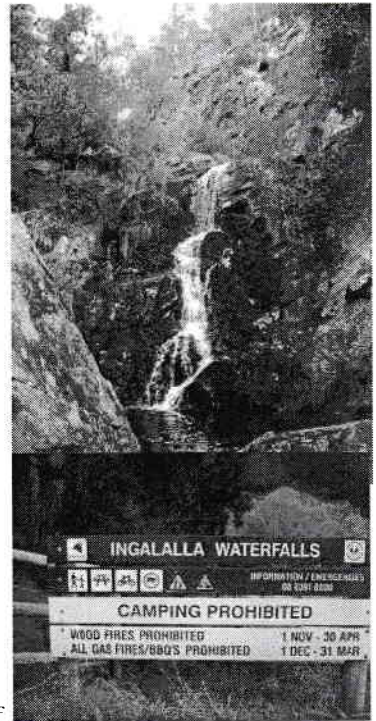
If you have any other suggestions for a fun day or afternoon please let Lyn, Jo or Sheralyn know. We will advise you of more details soon.

As always please come and speak with Lyn, Jo, or Sheralyn tonight if you have any suggestions or questions regarding our events for the year. Have a great night! !

Social Committee

FOUR WHEEL DRIVE SOUTH AUSTRALIA NATURAL RESOURCES ADVISORY UNIT Access Guide and Newsletter

A good inclusion on a one day trip to SA's Fleurieu Peninsula, 80Km or so south of Adelaide. Ingallala Waterfalls are a beautiful spot for a short visit or a picnic. Situated 10km south-east of Normanville. It is accessed from Hay Flat Rd, which runs from Normanville, reaching Range Rd. just west of Parawa. A short walk from the carpark and picnic ground along a narrow ravine, the lower falls are set amongst impressive rocky cliffs and tall eucalypts. The upper falls are reached along a walking trail around the rim of the ravine. This trail starts at the carpark and follows the edge of the adjacent Second Valley Forest section. Finches, Robins, Wrens and more provide for good birdwatching. After rain you'll probably get water over the waterfall(s). Don't expect toilet facilities. For more accurate detail visit the local Information Centre at Yankalilla (this also holds a variety of information on walks in the area, including those in the Deep Creek Conservation Park).



Five South Australian wetlands are included on the List of Wetlands of International Importance under the Ramsar Convention, out of the 64 currently in Australia. These are; The Coorong, and Lakes Alexandrina and Albert Wetland; Bool and Hacks Lagoons; Riverland; Coongie Lakes; Banrock Station Wetland Complex. But what is Ramsar?

Ramsar is a town in Iran where in 1971, 18 nations (including Australia) met to adopt an intergovernmental treaty known as the "Convention on Wetlands of International Importance especially as Waterfowl Habitat" which provides the framework for national action and international cooperation for the conservation and wise use of wetlands and their resources. This is more generally known as the Convention on Wetlands or the Ramsar Convention. There are presently 154 Contracting Parties to the Convention, with 1674 wetland sites, totaling 150 million hectares. A wetland should be considered internationally important if:

1. It contains a representative, rare, or unique example of a natural or near-natural wetland type found within the appropriate biogeographical region.
2. It supports vulnerable, endangered, or critically endangered species or threatened ecological communities
3. It supports populations of plant and/or animal species important for maintaining the biological diversity of a particular biogeographical region.
4. It supports plant and/or animal species at a critical stage in their life cycles, or provides refuge during adverse conditions.
5. It regularly supports 20,000 or more waterbirds
6. It regularly supports 1% of the individuals in a population of one species or subspecies of waterbird.

7. It supports a significant proportion of indigenous fish species, species or families, life-history stages, species interactions and/or populations that are representative of wetland benefits and/or values and thereby contributes to global biological diversity.
 8. It is an important source of food for fishes, spawning ground, nursery and/or migration path on which fish stocks, either within the wetland or elsewhere, depend
- Ramsar Mission Statement: "The Convention's mission is the conservation and wise use of all wetlands through local, regional and national actions and international cooperation, as a contribution towards achieving sustainable development throughout the world" (Ramsar COP8, 2002). Sources:
- Bool Lagoon Game Reserve and Hacks Lagoon Conservation Park Management and Ramsar Plan 2006 - Dept for Environment and Heritage SA
 - Wetlands of South Australia - International Convention on Wetlands - Dept for Environment and Heritage SA <http://www.environment.sa.gov.au/biodiversity/wetlands.html#convention>
 - Text and Logo courtesy of the 'The Ramsar Convention on Wetlands' website at <http://www.ramsar.org>

Ngarkat Conservation Park

Report of Ngarkat Border Track Interclub Working Bee : 28-29th April 2007

The weekend's activities were preceded by a Friday day trip into the Big Desert State Forest. This was enjoyable new ground for most, but quite difficult in places.

Despite soaking rain on Friday and additional showers on Saturday, this was an excellent working bee. The whole work force was concentrated on the Border Track and numerous goals were achieved. All participants enjoyed the weekend, and made a huge contribution to the maintenance and sustainability of the Border Track.

Present were 12 clubs, 40 vehicles and 70 volunteers - probably the best ever attendance. The large numbers enabled the formation of several work groups, each charged with separate tasks. There were,

- The Murray Bridge group determining track monitoring requirements (installation commenced on several sites)

- A 'resupply group' delivering pre-cut and drilled fence posts as required along the track,

- Three 'maintenance groups' re-opening several previously closed sections of the original Border Track, closing

numerous 'undesirable' finger and bypass tracks, delineating two camping areas (including a new site just north of Hensleys Trig) and performing other general track maintenance.

The Ngarkat Track Maintenance Committee, and the Senior Park Ranger thank you all for your attendance and the many jobs well done.

Footnote: The rain provided made northern access to the park a 4WD experience with water over the road in several places and very slippery conditions. Several groups returning to Adelaide went south via the Centre Track & Pertendi

Hut, increasing the trip by 50km and 1½ hours.

Source Bob Bolto for Ngarkat Tracks Maintenance Committee - (a sub-committee of the NRAU of Four Wheel Drive SA.)

Sue (08) 8269 2883 suzy@internode.on.net

LATEST 4WD PRODUCT

It's called the **R.T.I.** or **Rough Terrain Indicator**. It can be used for all types of 4wding, accents and descents, sandy or rough tracks, from mild to wild. Caravaners and week-enders, whether its soft-roaders or custom modified vehicles.

Imagine this, you're travelling along the main hi-way and then turn off onto that all important track you've been dreaming of, and you are confronted with the "Road to Hell". What do you do? What will happen if I get it wrong?

Well several things such as, breaking something ,damaging the environment, arriving at the other end at a very high speed with bits hanging off and strewn all over the place, and your left arm numb from your wife/partner belting the s*it out of you!

You need the R.T.I. The **R.T.I** is more sophisticated than Pajeros inclinometer and more accurate than a pair of Fluffy Dice.

Before you use your **R.T.I** it has to be calibrated to suit the challenge. First you need to

- 1 - Stop, get out & look,
- 2 - Think, assess & decide
- 3 - Adjust the calibration module

1 x can of Coke (basic 4wd certificate or competent person) or

1 x can of Beer (advanced 4wd certificate)

While assessing the severity of your challenge take an appropriate number of gulps from the can of choice.

- 4- Adjust filter control

Place the can in your vehicles appropriate drink holder (picture shown in safe mode)

Dashboard cup holder = Medium terrain

Console cup holder = mild terrain

Rear seat cup holder = Extreme terrain

CAUTION: Do not over/under calibrate or have the wrong filter adjustment on because an incorrect reading will result as well as your left arm becoming numb!

If at any stage during your traversing the system activates, apply steps 1&2.

Rub the feeling back into your arm and re-calibrate unit (it may be necessary to replace the module before continuing.)

If a refined result is required the **R.T.I** has a" Micro Indication" setting and 2 cans can be used. .

CAUTION: If system is activated in Micro mode the mess will be excessive and the left arm and or leg will become numb with possible ringing in the ears!

Happy 4wding





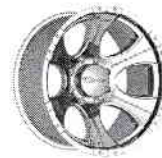
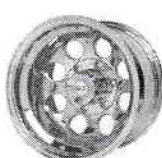
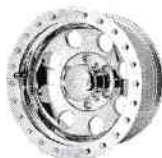
Legendary Offroad Tires

www.mickeythompsontires.com

ATZ 80/20 %

FC-11 70/30 %

MTZ 60/40 %



FOR THE BEST ADVICE & SERVICE ON ALL 4WDS
4WD WHEEL ALIGNMENT AND SUSPENSION SPECIALISTS
SPARE 4WD TYRE & RIM HIRE / RECOVERY EQUIPMENT
EXTENSIVE RANGE OF OTHER BRANDS AVAILABLE



**TOTAL
TRACTION
TYRES**

DARREN CALLARY

Mobile: 0404 099 397

Ph: 08- 8186 1011

Fax: 08- 8186 1022

UNIT 8/4 ALDENHOVEN ROAD

LONSDALE SA 5160

Email: sales@totaltractiontyres.com

4x4, SUV, Car and Light Commercial - Wheels, Tyres and Suspension

Your Local Authorised Dealer

Out of the Mouth of Babes

Brenton & Jo Bowley

I know it was our fault, but it started such a long time ago and bad habits are hard to stop even when circumstances change; besides it was all her fault, she started it.

We've been camping for a long time now; starting by going to all points of the compass in a valiant sedan with a 2 man tent and a foam esky stuffed into the boot. But as we ventured further and further off the bitumen, the car and the future Mrs B started to complain about the rough treatment (quote: "sh*t this tent leaks").

So with another car, a 3 man tent and a Coleman esky stuffed into boot, we set off once again to explore (quote: "sh*t its hot we need air conditioning").

This lasted for a few years 'til Bubs arrived and was old enough to travel. Now the family camping trips can start, we'll need a bigger tent, one on a trailer will do, and a fridge and a 4wd to pull it so we can go on all those tracks we've been missing out on.

Now with all this outback travelling (and city traffic) you occasionally/ always encounter surprises jumping out at you in one form or another when you least expect it e.g.: pot holes, potential punctures, scared, weird, strange stray wildlife, stop signs, etc so the Australian standard exclamation is ofcourse "ohh SSH*T!!".

The BIG trip to Darwin in 1986 was a cracker (the road was still dirt then) Nathan was 22months old, we took a full size cot and had to wash nappies. We soon realised we didn't take enough water so we washed him in the creeks. We also broke the tow ball off the Nissan and tied it back on with fencing wire, ran off the road in Kakadu and submerged the ute crossing JimJim Creek (no damage only to the seat covers). Boy did we have fun, but in doing so, a few Australian Standards were said on that trip.

After weeks, and thousands of kilometres later, we arrived back in Adelaide and called into see Mum & Dad to tell them of our 4wd expedition. Guess what the first words Grandma and Grandpa heard from their grandson after he'd knocked over his building blocks . You guessed it! "Oh Sh*t!"



VogueLending

Home Loan *tired* or just *old fashioned* ????

Why not upgrade to a stylish new

‘up to date’

home loan through Vogue?

We give ‘obligation free’ confidential advice in the comfort of your home. Call Paul on 0405484448.

Home Loans, personal loans, refinancing, debt reduction,
First Home Owner’s Grant, pre – purchase approval.

Proud sponsor of the Mount Lofty Rangers Magazine

TCIS Insurance Brokers Pty Ltd

Ken Bradey

Tel: 8278 7000

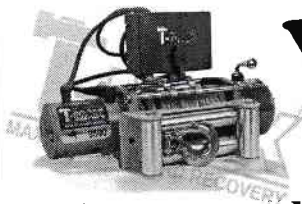
www.tcis.com.au

National Insurance Scheme

Australian National For Wheel Drive Council (ANFWDC)

- | | |
|---------------------------------|--|
| * Four Wheel Drive Motor | * Camper Trailer & Caravans |
| * Camping Equipment | * Home & Contents Cover |
| * Other Insurances | * Payment Options Available |

Proud sponsor of the Mount Lofty Rangers Magazine



Winch Offer

Here's a few great reasons why T-Max Winches are the best value on the market

- T-Max winches have hardened gears & gear carriers
- Outer drive gear is longer & larger in diameter, hardened and properly circlipped
- Brake assembly has no movement on brake shaft
- Brake shaft is hardened & fits correctly
- Internal drum braking system for positive brake control
- Gear & motor housing is 1 piece, tight tolerances for better sealing & hardened gear ring
- Both ends of motor supported by bearings not bushes
- Winch has undergone salt spray testing for 72 hours
- All T-Max winches are tested prior to packing
- All winches undergo line pull tests to 30% over rating, 9000lb tested to 12000lb
- Aircraft remote plug connector to eliminate interference with switch
- Double solenoids in control unit
- New 6.6hp Motor
- Full service Two (2) Year Warranty and National support
- Sizes Available 6500lb, 9000lb, 10000lb, 12000lb, 15000lb

****FOR JUNE ONLY****

T-MAX 10000lb WINCH

\$850.00

INCLUDES

****Bonus Snatch Block****

*See Ian Richardson
Tonight or Ring
Southern Vales 4WD
8381 8300
Fitting Available*

MURRAY SUNSET TRIP REPORT

SATURDAY 9TH JUNE 2007

The Reeds

Left 6.00am Saturday morning to meet the others who stayed the night at the Pinnaroo Caravan Park. We arrived at 8.45am for breakfast at the Pinnaroo Bakery and ready for the 9.00am start. Couldn't have asked for better weather, the sun was shining and the air was crisp, there were eleven 4wd's ready to embark on one of Merv's legendary trips. We started through Pinnaroo's Mallee country to the Big Desert National Park we came across Colburn Pines which were planted in 1928 by Mr Colburn along with some fruit trees. Morning tea was by some large red river gums which seemed out of place considering that there weren't any more planted for the next 80km away. Rumour has it that aboriginal traders dropped the seeds unintentionally many years ago. The tracks were changing all the time; we came across Cactus Bore which was sunk in 1929. Had some fun in the sand hills which took a while, few cars needed to try a couple of times. We stopped at Round Swamp to set up camp for the night, had a good fire and all the stories of the day started to emerge after a few drinks. The night was very cold minus 3 when we got up, with ice on the tent.

Day 2 10/06/2007

The morning was very cold and foggy and there was ice on everything. We were the last one's to have packed up and leave due to as very tasty breakfast of scrambled eggs. We left Round Swamp Camp at about 10am CST. We then drove into some awesome mud and all had a great time sliding around, Murray had so much fun he decided to drive over it again without his wife in the Pajero. Pete and I had trouble video taping the mud crossing because the lenses fogging up. We then went up a steep track to the southern trig point and looked over spectacular views. Skippy had parked off on a side track and proceeded to get incredibly lost. He then had to do a lot of difficult reversing maneuvers, so much for being a geocacher!!!

We continued our adventures and hit some fog, which fortunately didn't linger long. Time for a lunch stop so we headed off to Rainbow for petrol and pies. Our next part of are trip was in the most amusingly named place of Bollock Bottom reserve. It was somewhat bumpy, muddy and slippery. We passed Lake Albacutya that had been completely dry since 1976. The terrain then change to sand, some hard and compacted and some very soft and quite corrugated. We all took a wrong turn and had a sense of de ja vu as we went round recovered our tracks.

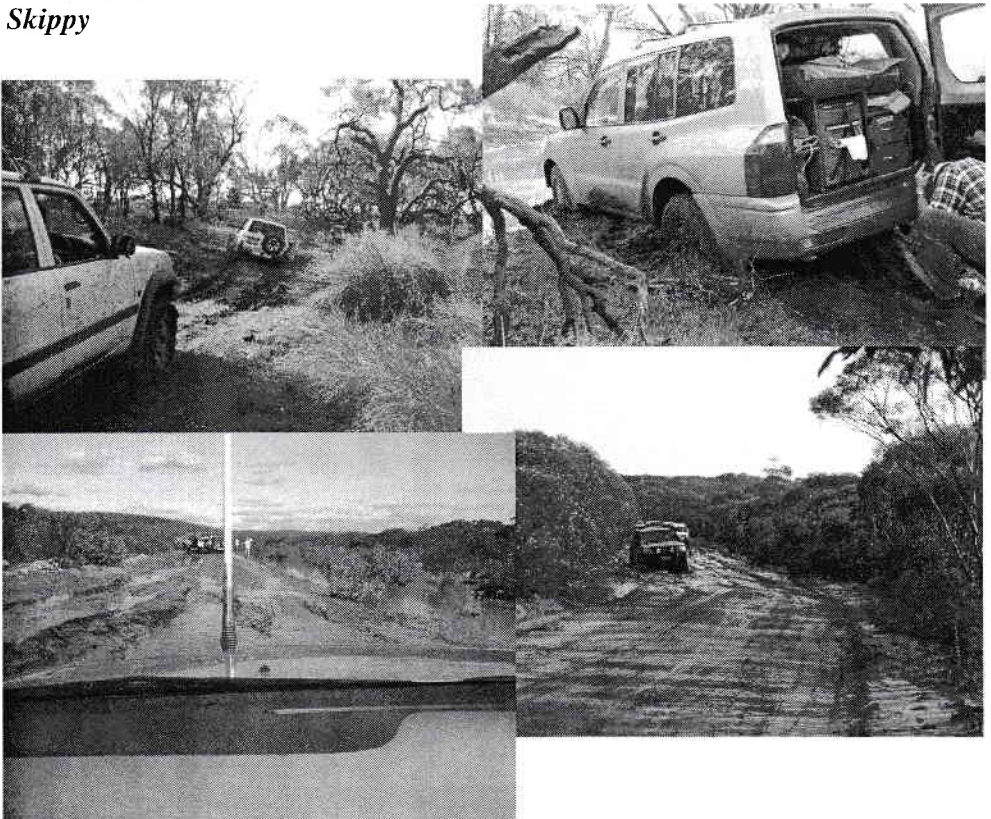
At the end of the park a few of us went off to drive across the lake. Eventually we hit the blacktop and headed for our campsite at Black Flat.

We all pitched up quickly and got stuck into happy hour around 5. Some of the guys went foraging for wood and came back laddened. A huge campfire was enjoyed by all.

Sarah

Sarah forgot to mention that I let her drive the GU for a while, as she started to drive off Sarah was using the brake pedal as the accelerator she couldn't understand why the car wouldn't move forward. During the trip she constantly was depressing the foot rest instead of the clutch, at one stage I said Clutch and she thought she had to change a gear, and she ended up stalling the GU
I wonder why!

Skippy



Day3 11/6/2007

After a great night and another good camp fire, we awoke to a light rain. Amazing timing the weather has!

Following the penalty applied to the Skip Bin for their in-discussion about being late in packing up and holding up the group to leave on time.

Sarah and Skippy were not going to be last to pack up on the last day, no way were they going to do another trip report.

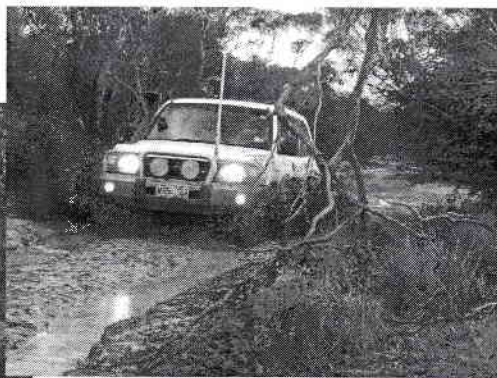
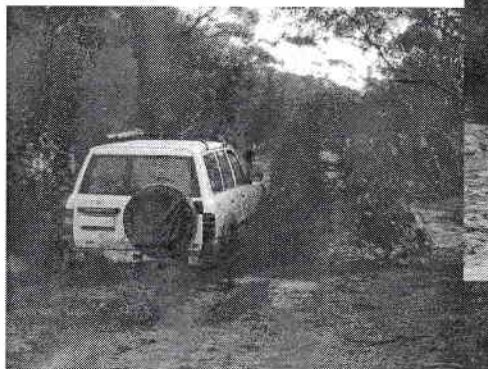
Up early and away they were packed up in a new record time!

A planned was hatched to rearrange who was to do the last day's trip report. As we left Lake Brimin, Skippy's vehicle was selected by a random number selection, well sort of!

Well we could not use the radio for the next three minutes as Sarah went off stating her reasons why they shouldn't do the next report, well that was the edited version – bait taken!

Lyn and I volunteered as we were concerned about Sarah's rising blood pressure. We followed the track around Lake Brimin. Turning into Daltuck Track (no camper trailer zone) the tracks became sandy and soft in places, but we were maintaining a good pace and got through easily, then turning north to Wirrengren Plain via Snow Drift.

Snow drift is a large sand drift where we had a short coffee break before heading around Wirrengren Plain.



Wirrengren Plain was once a lake that had water up to 12ft deep and has not held any major water holding since 1874.

The lake is approximately 61.2square kms and the water holding capacity would be in excess of 150 million litres.

As we followed the boundary of the Big Desert Park we encountered our biggest sand hill yet about 8m and very soft at the top a few made it first time and other had a couple of goes to get over. Paul West got the accolade of not giving up it took about 10 goes but finally made it after a 3 km run up.

An afternoon coffee break and then we were out of the park, and off to Pinnaroo. After a refuel and ice creams we were of on Merv's infamous last track " ... it will only add another 20 minutes"

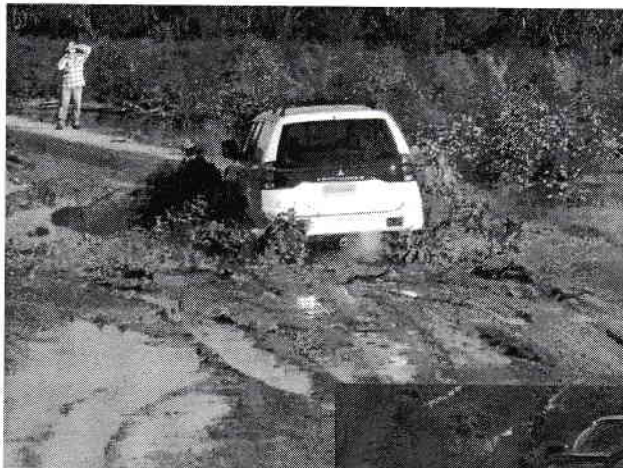
The first track ended over grown, I led a couple of vehicle around to the railway line, most turned back. We manage to cross over the line and get onto the track on the other side and met up with everyone at the next crossing.

The next track we encountered some mud holes which provide some final entertainment at Maryanne's expense when se got bogged after mis-interpretation of Merv's instructions.

Merv lived up to his reputation again!
A great trip with a good company and everyone had a top long weekend –
Thanks from everyone to Merv and Ann

Lyn & Jeff Morgan





Warraweena Conservation Park – Flinders Ranges

June Long Weekend

I got away from work around 9:30am (I start at 5am) and it wasn't long until I caught up with Graham & Coralline in their patrol towing their trailer with all the camping gear behind them. We cruised on up on the highway to Pt Augusta and turned right towards Hawker and the gateway to the Flinders.

We came across another patrol towing camper just before Parachilna driven by Gary and Cathy. So we ended up in a convoy of 3 in to Beltana Roadhouse. We checked directions to Warraweena and headed off, two cattle grids later Graham's trailer snapped an axle, 30 minutes from camp and we were stranded. We lost around 1 hour trying to get it going. So we decided to get to camp, set up and come back to pick up the essentials. We were set up by about 6pm and got back from unloading the trailer around 7:30pm. Graham & I returned on Saturday with the temperature around a warm 4 to 5 degrees, removed the axle and took it back to the Beltana Roadhouse where Rob very kindly welded the axle together again and then braced it as well. A top job, it amazes me the level of skill these outback mechanics possess. We put the axle back on and headed so slowly back to camp with the trailer in tow. How much did an outback axle repair cost on a Saturday of a long weekend? I'll tell you later on.

We did not get back to camp until around 1pm; too late to hit the tracks as they do not let cars leave for the tracks after 10am. Mark and Lenora had arrived around 11am in their bloody Nissan (where are all the Toyota owners in this club). So we had lunch and did some sight seeing around the property. We checked out Black Rock camp ground about 40 minutes away from the homestead and still on the property. Not as big as the Lambing Camp Ground we were camping at and much closer to the hot showers than Black Rock. We stopped at the lookout on the way a short climb with just enough room for the 4 cars on the top of the lookout. On the way back we collected drift wood from the creek beds (the only wood allowed for fires on the conservation park) we filled 3 cars roof racks with wood for the fire and returned to find Barry, Dave and Tony (mates of mine who I planned the original trip with but threw it open to the club last minute) had stocked the fire up using the firewood left from Friday night. Well we had a great warming fire well stoked up by our resident pyromaniac Gary, who with a gleam in his eye took to the job with gusto, even considering getting out of bed to add more wood when it was overheard from around the campfire that the fire was a bit low now Gary had gone to bed. But we figured out how to do it ourselves and all went to bed warm in the plummeting temperatures.

The nights were cool dropping to 5 and 6 degrees and around 5am it must have been 0 or there abouts. The dew started very early each night with the canvass being very wet each morning. I was awoken by the call of nature around 3am Sunday when I opened the tent the clouds had blown over and covered the moon and it was dark as dark but much warmer than I expected.

It was eerie but amazing.

Sunday morning the sizzle of bacon and eggs was on my mind so it was a quick cook up and off to see Stony the station manager for the keys to Mt Gill 35km track took 5 hours. More rough than challenging but all the same a great drive with a magnificent view of the Flinders. We lunched a top of Mt Gill with a 360° panoramic view before heading back down and back to camp. The drive up was interesting along creek beds and we crossed a number of wash ways ducking under low hanging branches and around newly washed down tree trunks and debris adding that bit of interest. It was low range crawling and hopping most of the way up and back. In some places the track was just able to be made out but as a first time trip leader we all made it back to camp. The notes and maps from Stony were easy to follow and with the distance counts and way points made it easy no techno wizzbangs here just good old fashioned instructions.

Sunday night around the camp on the last night was a good social event with everyone being relaxed by a good days 4wheeling and of course there were those who enjoyed a red or 3. With Gary keeping the home fires burning we ate swapped stories and generally had a good time. That was until Graham tried to keep the fire burning using natural gas which was still in full force the following day.

Monday and an early start and those without trailers took the track off the property along creek beds most of the way and through some nasty wash aways and deep ruts. Loosing the tracks a few times and having to reverse back to get back on them was interesting. It was amazing the amount of debris wash down the creek beds in the last major rains earlier this year. The track came out near Parachilna where we intended having lunch, but it was packed so we moved on and headed home.

I have booked for Warraweena for the October long weekend for another trip as we did not cover half the tracks this weekend so I heading back check the trip board for details.

Thanks to the group who made it nice and easy for my first trip leader exercise

Trevor Hill

Camp Meals

(Recipes from Camp Cook)

Pumpkin soup

1/2 medium pumpkin	1/2 teaspoon of salt or to taste
1/2 teaspoon black pepper	1 teaspoon basil (optional)
4 large potatoes	2 medium onions
1 teaspoon curry powder	2 or 3 bacon stock cubes

Cut pumpkin and potato into small pieces, chop onion finely. Place vegetables and spices in camp oven. Add enough water to almost reach the top of the vegetables. Crumble in bacon cubes. Add salt and pepper. Bring to the boil then simmer until vegetables are soft. Mash or sieve. If soup is too thick add a little milk.

Beef goulash

1 kilo chuck steak (cubed)	2 tablespoons butter
2 large onions, chopped	1 clove of garlic, crushed
1 tablespoon paprika	2 potatoes, cubed
1/2—3/4 cup beef stock	3 tablespoons tomato paste
1/4 cup sour cream, to serve	

Heat butter and fry onion and garlic until golden. Add meat, a little at a time until all browned. Add beef stock, and remaining ingredients. Bring to the boil. Simmer very gently, covered, for 1 1/2—2 hours until beef is tender. Remove from heat and stir in sour cream.

Macadamia Bread

½ cup water	1 cup milk
30g (1 oz) butter	1 tablespoon honey
4 cups self-raising wholemeal flour	1 teaspoon salt
120g (4¼ oz) chopped macadamia nuts	

Heat water, milk and butter, until butter is melted. Add honey and stir. Cool. Knead remaining ingredients into dough. Place dough into a greased loaf pan. Bake in hot oven for 35 to 40 minutes.

If you have any Recipes to share please email to southern.vales@esc.net.au

Four Wheel Drive Courses

MLR Club Training
Contact: Jeff Morgan
Home: 8381 5404
Mobile: 0410 665 019

TRAINING DATES

Peake: Ken Bradys booking which we have access to 23/24th June.

Basic Training Theory has been cancelled until further notice, when we are advised by the DTU and training books are available we will re-advise.

Intermediate Driver Training Assessment 002 & 003 Elements only -
Morgan 25-26th August.

Trip Leaders Advisory Course - Date TBA based on numbers

DTU Skills Update Kuitpo 28-29th July

DTU Skills Update Peake 3-4th Nov

Ozi Explorer - Intermediate Users - Date TBA subject to numbers

Advisor Course 10-11th November

Assessors Course TBA

Trip Leaders

For those Trip Leaders planning trips this web site is good value

<http://www.toiletmap.gov.au>

For those with Garmin GPS's check for your latest updates

<http://www.garmin.com/support/blosp.jsp>

Club Trainers

Trainer's: Ian Manglesdorf, Paul West, Tim Byrne, Paul Tabone

Assessor's: Ken Bradey, Mark Curtis, Layne Holberton, Jeff Morgan,
Christian Whamond, Ricky Esser, George Haniotis.



MT LOFTY RANGERS

Lets Promote Our Club!!!

Cloth Badges	\$7.00
Car Stickers	\$2.50
Name Badges	
Initial 2 on joining	FREE
Additional	\$6.00
Replacement	\$6.00
Sand Flags	\$2.50
Tyre Plugs	\$7.50

Please see a committee member for the above purchases.

Windcheaters (fleecy lined)	\$45.00	
<i>(includes name and logo embroidered on & GST)</i>		
Arctic Fleece Tops	\$45.00	
<i>(includes name and logo embroidered on & GST)</i>		
Polo Shirts (short sleeve with Pocket)	\$37.00	(no Pocket \$35.00)
<i>(includes name and logo embroidered on & GST)</i>		
Caps (including logo embroidered on)	\$13.00	
NEW ITEM		
Bucket Hats (including logo embroidered on & GST)	\$13.00	

If you require clothing please speak to a committee member.

ITEMS FOR LOAN

Books (hopefully in the future)	Recovery Kit
Club Banner	Tirfor Winch
Club Flag	Puncture Repair Kit *
GPS Promotional Videos	First Aid Kit *
Maps	4 x Lightweight Shelters with sides.

* Please replace used items

Please see Merv Tucker for any items you wish to loan Ph 8278 1414.

Trading Mart

For Sale

Nissan Patrol GU Series 3 Alloy Bull Bar Good Condition \$200.00

DMH Outback 6 Dome Tent 6.0m x 3.0m 2 Bedroom can sleep up to 6 used 4 times also has brand new fly. New canvas carry bag \$200.00

2 Dunlop Grandtrek AT2 265/70/16 to Nissan Patrol 3/4 Tread \$50.00ea

2 Bridgestone Duelers D693 Pattern 1/2 Tread \$50.00ea

Contact Dave Willsmore (Shorty) 0412 411751

For Sale

Garmin Streetpilot 111 Including Turn by turn voice navigation Autorouting City navigator Version 4 \$ 400.00

Garmin GPS V Including Metroguide Version 4 and Turn by turn navigation Autorouting City Navigator Version 6 \$ 400.00

Garmin GPS Geko 201 \$ 150.00

Nissan Patrol Series 4 Winch compatible Bullbar Still in box \$600.00

Contact Reno 0418 828372

For Sale

1 Bridgestone Dueler D693 & 1 Michelin LTX. 4-5mm tread depth, LT265/75/16. good condition, make great spares. \$30ea or \$50 both

Used, heavy duty Aluminium or Steel extending roller bearing slides. Ideal for fridge or drawers. Closed length 670mm, extended length 1800mm. \$80 pair.

Bbq Cook-On, Beachcomber .4 Burner, Timber frame. Half grill, Half plate. With lid and weather proof cover., Very Good Condition \$75.00

Camp Bed Two yrs old, spring frame, canvas bed. 1.85m long x 0.65m wide. Very comfortable, Small pack size. Suit junior., Excellent Condition \$25.00

Sleeping Bag Roman -5C rated. Insulfil fibre filling, lightweight and small pack size. Comes with compression stuff sack. Suit junior., Excellent Cond. \$25 .00

Contact Neil Cook on 0409286629 for more info

For Sale:

Hypervent mattress underlay stops condensation under your camper mattress \$55 per metre, roll width 1 metre

Engel fridges June - August deal as shown in this mag on page 8.

Plus get a FREE transit bag on top of all the other gear

See Paul Tabone or phone 8276 5666. 0417 080 663

Stock Clearance



50 ltr Reefer (Lemac) Fridge/Freezer.

Dual compartment. Stainless Steel Interior. 12/24/240 volt Danfos compressor.
Brand new still in box. \$800 each. These sold new in shops for \$1300

12 volt power packs.

I have a variety of Thumpers for sale at really cheap prices. All units are brand new still in their original packaging and come complete with jumper leads (on larger models) and instructions.

Battery Packs

BAHC30 OUTBACK BATTERY PACK 30AH

Sale Price \$250 Recommended Retail \$449.00

BAHC48 OUTBACK BATTERY PACK 48AH

Sale Price \$400 Recommended Retail \$599.00

BAHC75 THUMPER BATTERY PACK 75AH

Sale Price \$600 Recommended Retail \$849.00

BAHC105 THUMPER BATTERY PACK 105AH

Sale Price \$650 Recommended Retail \$949.00

In Car Chargers

BAKIT10 IN CAR CHARGE KIT 10 AMP SUITS BAHC30

Sale Price \$35 Recommended Retail \$79.95

BAKIT20 IN CAR CHARGE KIT 20 AMP SUITS BAHC48

Sale Price \$50 Recommended Retail \$129.00

BAKIT30 IN CAR CHARGE KIT 30 AMP SUITS BAHC60 & HIGHER

Sale Price \$60 Recommended Retail \$139.00

80/100 Series suspension 2" lift kit. Complete with 4 shocks and 4 springs.

EFS brand. Still in boxes, all as new, never been put in a car.

\$500 supply only or contact us for a special price including fitting.

Please contact Glenn Bull on 0410 64 8410

Glenn Bull

Manager

Mount Barker 4x4 Centre

PH: 08 8391 4391

Fax: 08 8391 4323

www.mountbarker4x4centre.com.au



4X4 ACCESSORIES



ACCESSORIES SALES AND FITTING SERVICE

- | | | |
|--|---|--|
| <input type="checkbox"/> Dual Batteries | <input type="checkbox"/> Air Compressors | <input type="checkbox"/> Fridges |
| <input type="checkbox"/> Side Steps | <input type="checkbox"/> Driving Lights | <input type="checkbox"/> Snorkels |
| <input type="checkbox"/> Roof Racks | <input type="checkbox"/> Storage Systems | <input type="checkbox"/> Cargo Barriers |
| <input type="checkbox"/> Bullbars, | <input type="checkbox"/> Staun | <input type="checkbox"/> Polyair Springs |
| <input type="checkbox"/> Warn Winches | <input type="checkbox"/> Wheel Carriers | <input type="checkbox"/> Fuel Tanks |
| <input type="checkbox"/> Canopies | <input type="checkbox"/> Recovery Equipment | |
| <input type="checkbox"/> Air Locking Diffs | <input type="checkbox"/> Old Man Emu Suspension | |
| <input type="checkbox"/> UHF Radios & Antennas | | |

*****CLUB DISCOUNTS AVAILABLE TO ALL MEMBERS*****

*****CONTACT GLENN BULL FOR FULL DETAILS*****



**Mount Barker
4x4 Centre**

**Shop 10/4 Dutton Road
Mount Barker SA 5251
Tel: 08 8391 4391**



Serious 4WD Equipment



Four Wheel Drive S.A. Ngarkat Working Bee 28/29 April 2007

Despite the weather, this was an excellent working bee, with numerous goals achieved and probably our best ever attendance. Numbers were 12 clubs, 40 vehicles and 70 volunteers.

Many of the hardy (some would say foolish), arrived at the Park on Thursday, or Friday morning to participate in a day trip into the Big Desert State Forest; new ground for most of them, which was enjoyable and quite difficult in places.

Access to the park from the north on Friday night was certainly a 4WD experience with water over the road in several places and very slippery conditions.

The weather on Saturday was reasonable, with many fine breaks and occasional sunshine. The whole work force was concentrated on the Border Track. Because of the large numbers, we were able to split into several groups, each with separate tasks. Our 'resupply group' cut and drilled fence posts and delivered as required along the track.

The three 'maintenance groups' re-opened several previously closed sections of the original Border Track, closed numerous 'undesirable' finger and bypass tracks, delineated two camping areas (including a new site just north of Hensleys Trig) and carried out other general track maintenance.

The Murray Bridge group, concentrated on determining track monitoring requirements and commenced installation on several sites.

After the soaking on Friday, the additional rain on Saturday and overnight made leaving the Park on Sunday quite difficult. Several groups returning to Adelaide went south via the Centre Track & Pertendi Hut, increasing the trip by 50km and 1½ hours.

From the feedback we received we believe all participants enjoyed the weekend. The group made a huge contribution to the maintenance and sustainability of the Border track. The Ngarkat Track Maintenance Committee thank you all for your attendance and efforts. Donna (Senior Park Ranger) has also asked us to pass on her thanks for the many jobs well done.

A disappointing aspect of the weekend was the attitude of a party of tourists who insisted on ripping up the track with high tyre pressures.

One member of the party, with about 40 witnesses, decided he had the right to travel both north and south on one of the sand hills. A very foolish man considering that he was on the one-way section and the park ranger was within half a km of the activity.

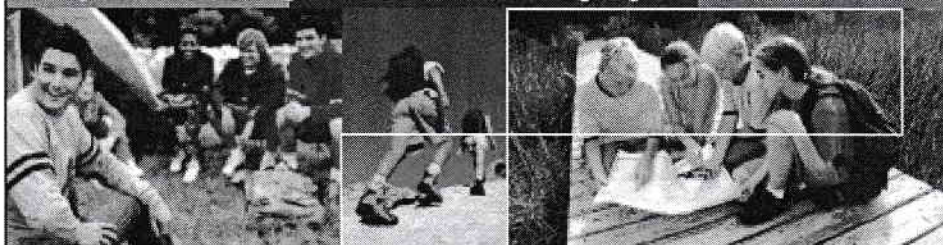
Regards, Bob Bolto
For Ngarkat Tracks Maintenance
Committee.



UHF CB RADIO CHANNEL ALLOCATION

USED FOR	CHANNEL/S	COMMENTS
Calling Established by law	11	To call or locate another station. Parties then switch to a conversation channel
Conversations	9, 12 to 17, 19 to 21, 24 to 30, 39	Used for conversations between stations
Highway Communications	29	Mainly used by Truck Drivers and other Highway users on the Pacific Highway in N.S.W.
	40	Mainly used by Truck Drivers and other Highway users Australia wide but not usually on the Pacific Highway in N.S.W.
Caravanners, Campers	18	Holiday Maker's communication channel, e.g., when in convoy
4WD Drivers	10	Used by 4WD enthusiasts, clubs, convoys and in national parks.
Emergency Calling Established by law	5	Can be used by anyone in an emergency situation ONLY
Repeaters Established by law	1 to 8 31 to 38	In duplex mode, repeaters need two channels to work. Receives on 1 to 8. Transmits on 31 to 38 (automatically). When within range of a repeater, it will increase the communications distance. Operation in simplex mode on these channels is not permitted when within range of a repeater.
Data Transmissions Established by law	22, 23	No voice transmissions allowed on these two channels

explore, experience, enjoy...



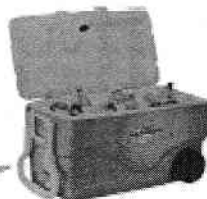
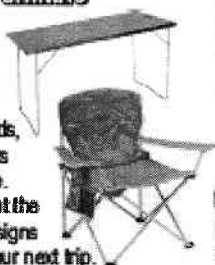
Fridges

All the leading brands, Engel, Wasco & EVA Kool on display side by side for you to compare. See us for the latest deals!



Camp Furniture

Chairs, Tables, Stools, Camp Cupboards, Stretchers and more. Check out the latest designs before your next trip.



Coolers

Coleman coolers in just about every size & shape imaginable!

Locally owned with National Warranty!

Horizon Leisure & Camping World really are the outdoor specialist, our massive buying power combined with our local knowledge ensures we stock an extensive range of products, at the very best possible prices, and don't forget we offer, **4WD club members an additional 10% discount** on most products. Call in and speak to one of our friendly team today.



Tents

Touring tents, Dome tents, Family Cabin Tents, Hike Tents & even Camper Trailer Tents, if you need a tent check out our huge range.

Sleeping Bags

Kids Bags, Jumbo Bags, Travel Bags, Hike Bags, & School Camp Bags we've got you covered.



Swags

Swags to suit all budgets, and huge selection of styles to help you make the most of your time in the great outdoors. Available in single, king size & double options.

Horizon Leisure & Camping World

Mount Barker 20 Cameron Road Ph 83983033
Open 7 Days Sunday 11 - 4 pm

Murray Bridge 209 Adelaide Road Ph 85324667
Open 6 Days Saturday 9 - 4 pm

* Terms & Condition Apply. See Instore For Details.



Your Committee

PRESIDENT	Dave Willsmore	0412 411751
VICE PRESIDENT	Trevor Hill	0400 676 954
SECRETARY & PUBLIC OFFICER	Pat O'kane	0408 775969
TREASURER	Nick & Sam Bray	0413 019087
ASSOCIATION DELEGATES	Paul West	0405 484 448
MEMBERSHIP OFFICER Assistants	Darren Callary Luke Hooper Gary Sawyer	0404 099397
TRIPS CO-ORDINATOR	Paul Tabone	0417 080663
EDUCATION OFFICER	Jeff Morgan	0410 665 019
MAP LIBRARIAN	Merv Tucker	0412 677 988
SOCIAL SECRETARY	Lyn Morgan Jo Reed Sheralyn Willsmore	8381 5404 8276 1212
PROPERTY OFFICER	Merv Tucker	8278 1414
MAGAZINE EDITOR Articles to: <i>e-mail:</i> southern.vales@esc.net.au	Ian Richardson	W:8381 8300 0414 322737
INSURANCE OFFICER	Ken Bradey	Wk 8278 7000
ABORIGINAL LIAISON OFFICER	David Goodenough	0439 687 166
WEBSITE Merchandise Officer	Reno Poropat reno@picknowl.com.au Narelle Palmer	0418 828372
www.mountloftyrangers.com.au		



www.mountloftyrangers.com.au