



Rangers' Review

Mount Lofty Rangers Inc.

PO Box 1150, Blackwood SA 5051

www.mountloftyrangers.com.au

August 2007

Volume 13 No.4



MLR leaves it's mark on the Painted Desert trip

TABLE OF CONTENTS

President's Report.....	3
Trip Reports.....	5-16
Upcoming Trips.....	20-24
Social Events.....	25
Recipes.....	28-29
Trading Mart.....	31

Mount Lofty Rangers Inc.

About Us

The club's aim is to enjoy all aspects of owning and using our 4WD's while enjoying the diverse surroundings offered by this great country. We are a club of 4WD enthusiasts who enjoy challenging driving, regular trips, camping, camp cooks and a great social scene on and off track.

Membership

Membership is open to anyone who owns a 4WD regardless of its make or model and has a passion for driving. Mount Lofty Rangers Inc is an affiliated member of the SA Association of 4WD Clubs.

Club Outings

The Mount Lofty Rangers provides regular day, weekend and extended four wheel drive trips, lead by experienced trip leaders. Trips are rated on the level of difficulty and are available to all members and guests.

The club has a dedicated social committee who also organises regular events that compliment the club trips.

Experience and Training

Our current members possess a wide range of skills ranging from beginner to advanced. The club has a number of accredited instructors and assessors, and is involved in regular training via the SAAFWDC Driver Training Unit.

Meetings

Club meetings are the second Monday of each month* and are held at the

Blackwood Football Club

Trevor Terrace

Blackwood

Time 7:15 pm

*Except where this Monday falls on a long weekend then the meeting is held on the 3rd Monday of the month

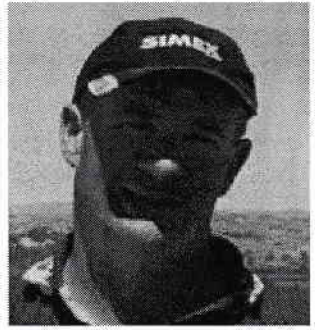
Information

For more information on the Club please check out our website at:

www.mountloftyrangers.com.au

MT LOFTY RANGERS UHF CLUB CHANNEL NO 27

"Shorty's Presidential Report"



Hi all,

It's hard to believe that the year has more than half gone already & now we are on the downhill slide to Christmas. On returning from a fantastic from the Painted Desert the weather was great and we all had a great time. On behalf of the group that went on the trip we would like to that Pat for putting it up on the trips board & showing us a great time.

We all learnt a lot on that trip about outback driving ,travel speeds dust, dust & more dust that you can't have enough spare air cleaners, how easily back windows can get broken & some other mishaps. The camper trailers faired fairly well considering the pounding that they got. I certainly know that more preventive measures on vehicles and trailers will certainly get done before next trip up there. Most of the group that went on this trip are pretty keen to do the Simpson Desert next year. Personally I can't wait, so keep your eye on trips board for that one because it will fill fast.

The clubs annual mid year dinner is coming up this Friday 17th August at TAFE SA in the city there are still some seats available so see Lyn Morgan if you would like to attend it all ways is a enjoyable evening.

Practical Training is on at Morgan Quarry on 25th -26th August and is for members that have completed a fair part of their 001 Basic and need to get this completed and start getting Advanced 002 Training on the way currently there are only 3 members on the board so see Jeff Morgan for more details.

The annual Christmas show has been changed this year to different format. This year the committee has decided to have a separate Christmas show this will be at Wall Flat on Saturday Dec 1st -2 plenty of room to stay the night .We will be having old fashioned races in the afternoon, then followed by the usual happy hour & BBQ. Dinner with salads around the campfire (weather permitting). We will still have our Christmas meeting at the club rooms on the 10th Dec but there will be no BBQ. Instead we will be having drinks from the Bar & nibbles and Santa will still come as per normal. Please put you name down on the Trip sheet for Wall Flat for catering numbers. See you all there.

See you on a trip.

Dave Willsmore (Shorty)

First Aid Course

Saturday & Sunday Course
Practical and Theory components

22nd and the 23rd of September

.....ONLY 15 PLACES AVAILABLE.....

Bulk price discount \$120 per person

Please list yourselves on available weekends

We need exactly 15 people to run **NO MORE NO LESS**

This way , we should be guaranteed to fill the class

Paul Tabone just attended a work place senior 1st Aid course @ \$170 per person

Payment of \$120 per person **NO REFUND**

will be required at next meeting to secure position.

Transfer of people that have payed and cant attend , is OK.

We also believe that the DTU will probably make it mandatory to have a First Aid officer on every trip.

You should all consider this course not only for club trips, but to have that knowledge when you do those trips on your own.

Venue and Biscuits, tea, coffee will be Free Of Charge normally \$55

Regards Sparky

Editor's Request

When sending Reports or items for publication **PLEASE** send in Word format and pictures as jpeg or pdf files as some have been sent in in other formats and I can not even open them Thanks Ian

PAINTED DESERT TRIP REPORT

7th - 15th July 2007

(Lena & Rob McClintock)

This trip for us was just fantastic, who would have thought that the Flinders Ranges and Outback would have so much to offer. From start to finish mother nature put on a spectacular performance. We are so Lucky!

7.7.07 - Five to start in convoy, meeting at Hungry Jacks. After negotiating town traffic we are all now in convoy and away we go. I'm the first to call for a pit stop. Much to the delight of others. Just drove through a blip on the map called **TARLEE**, you didn't even get time to blink. There was a sign that said "**THAT WAS TARLEE**". No 6 to the convoy has joined us in **CLARE** and that's it until we reach camp. Arrived at **JAMESTOWN** at 10.57 am - smoke'o and a park for the kids to play for a while. Fed and watered the wheels are in motion.

Reached **HAWKER** at 1.30pm - some refuelled and onward. Turned onto gravel or should I say mud track. The view is spectacular. Taken some good photo's. Having a heart attack at the mud covered car and trailer if you can find it under the mud!!! This is just awesome to see, how lucky we are. Saw some beautiful rainbows - didn't find the pot of gold. We are going into **ARKAPENA BUSH CAMP**. Set up camp and a lovely campfire in a shelter. A cosy night but windy. Not much sleep. About 11.50pm a helicopter flew over and woke most of us up.

8.7.07 - A brisk, overcast morning. Quick breakfast and pack up ready to go. Onto our next destination **WILPENA CREEK**. Short stay on the bitumen and then onto track, everyone's favourite, corrugations! Travelling along **BRACHINA GORGE GEOLOGICAL TRAIL**. Fantastic views of the Ranges. We go from up on the high tops to down below on the creek beds which portrays yet another setting. There are some scary looking trees, the children point out, you can only just imagine what it looks like if the creeks were flowing. Being at the foot hills is just spectacular. Stopping for a pit stop at **ACRAMAN**. Continued through the creeks. Out on the bitumen we drove to yet another pit stop at **PARACHILNA HOTEL**, starting to get out in the boonies now. We had coffee and munchies in the hotel.

Some serious corrugation as we turn off at **WARRAPEENA** and find a lonely Telegraph Repeater Station. Stop for a quick info read and photo. Onto **LEIGH CREEK COALFIELD**. Saw the ultimate Tonka truck - mind blowing - you have no idea of their size until you stand up next to one. The kids stood inside one of the wheels for photos, just unbelievable.

Southern Vales 4WD

Ian Richardson
0414 322737



Serious 4wd Equipment

88 Main South Road REYNELLA SA 5161 Ph: 8381 8300 Fax: 8381 8600

Email: southern.vales@esc.net.au www.southernvales4wd.com.au

Distributors of:

Black Widow Storage Systems

Milford Cargo Barriers

ROLA & Rhino Roof Racks

Kaymar & Stongarm Wheel Carriers

ERPS Rust Prevention

WAECO Fridge/Freezers

Hannibal and Open Sky Rooftop Tents & Awnings

Lightforce

T-Max,

DP Chip

GME

Icom

Bushranger

Hella

Michelles sacs

Staun

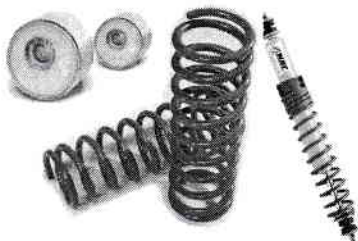
Uniden

Smartbar

SHU-ROO

and much more.

We have suspension systems including XGS, EFS, OME, Tough Dog, Bilstein, KONI, to name just a few.



Where Your Journey Begins



Proud Sponsor of the Mount Lofty Rangers Magazine

Onwards to **WARRAPEENA CAMP**. Now the task of setting up camp AGAIN - fun, fun! Saw the sunset - magical. Time for dinner and more chat around the campfire with marshmallows for the kids. Just the right thing to do before sending them to bed. Off to bed - a nice still night but chilly!

9.7.07 - Lovely crisp morning 3C - chilly! Had breaky, packed up and off we go again. Down to see **TALF ALF** that is if he is in. Not in! Kids played with the dog and wore him out. Did see a goo washing machine that he had, it was attached to a push bike. As you pedalled it turned the drum. So you can imagine that his load of washing got a good wash by the time some of us had a turn. Then off we go to **MAREE**, more dirt track. Started the drive on the **OODNADATTA TRACK**, just goes on forever. We are having a munching time on the track and the kids are playing with some strange looking statues. One of them is two aeroplanes that symbolised the gateway - quote "**MAY THIS GATEWAY STAND TO THE REALISATION OF HUMANITIES TRIUMPH OVER ITS OWN IGNORANCE**". It has reached a whopping 17C, this means a chilly night. After setting about on our travels again we stopped next to **LAKE EYRE**, quite mind blowing in its vastness. Salt flats as far as the eye can see but when water flows into part fill the lake via great inland rivers, birds some from great distances to feed and breed. This is also the lake upon which the land speed record was set.

Next we are onto the **MOULD SPRINGS**. Here we find the **BLANCHE CUP** (not too much bubbling). However we are informed that the springs are fed from the **GREAT ARTESIAN BASIN**, human kind is obviously using too much of its resources. **THE BUBBLER** was a bit more eye appealing, bubbling and rippling. Rather tranquil one might say. This spot also gave story to an Aboriginal dreaming story, symbolised by a snake that once lived and died there. The trickling and winding of the water from the mound represented the snake as it would its way off to die. It's about 3.30pm now, time is marching on and we are now about to head out to camp, which is **COWARD SPRINGS**.

Back onto the good old gravel track, looking forward to a shower and there is a hot spring that you can go in. Set up camp, really getting good at it now. The kids have gone off to find the hot springs. The mention of water has sent them all mad. The showers look just as inviting. Hot or cold water, at this stage we are really not fussy. You have to heat the donkey, it's like a furnace and thus it heats the water. Can't wait for that, shower time it is. The kids had a play in the hot spring. It was only a small area but quite sufficient for the kids. Feeding time - our gourmet chef, Trevor is cooking steaks on the fire and we all just brought our own potatoes and whatever else you wanted to put in or on the fire. It was absolutely delicious.

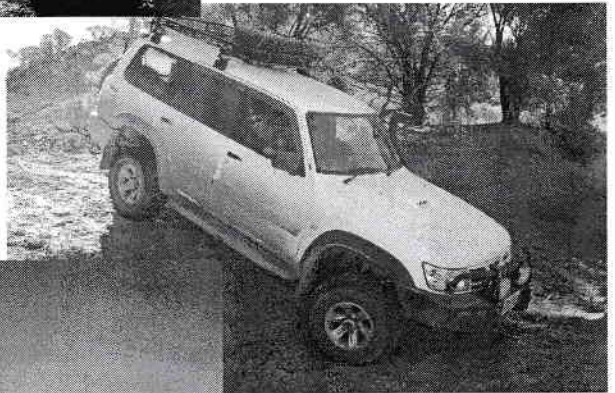
After putting the children to bed us adults had chat time around the camp fire. A real good night and of course the warmest spot. Myself and some other fellow campers also went off to find a geocache (I think that is how you spell it) with Skippy. This we did in the pitch black, just to make it a bit more interesting. Having found our cache and left our little note, we made our way back to the campfire for a warm up and then off to bed.

10.7.07 - Nice fresh, sunny, crisp morning. Breakfast, pack up camp and on the track again. Along the way it was decided that seeing as there were a lot of railway sleepers lying around we would stop and create the letters MLR (Mount Lofty Rangers) on the embankment, and not forgetting group photo. Along the track other travellers have stopped and made various signs with the sleepers. Stopped at **BERESFORD RUINS** for a peek and for another casualty stop. Not us this time. Gary has got a broken rear window. The stones of the track can be rather deadly. So we waited for him to patch up his window. After this we headed out to **WILLIAM CREEK**, approx 70km for fuel, coffee and the all important pit stop. Not much here and apparently one of the smallest town in Australia, population 10, but situated on the world's largest working cattle station - 24,000 sq k, Anna Creek Station. How about that! There is a pub, which inside is just covered with all sorts of memorabilia that people have left, from business cards to hats, T-Shirts and even jocks. Absolutely incredible. Across the road is a little museum highlighting various events in time. You can also charter a flight from here to go over Lake Eyre. Other than that, nothing but good old dust. There is a sign here saying "203km to Oodnadatta". That's nice to know seeing as that is where we are heading to. It is also pretty warm considering it is only 17C.

Okie dokie, break time over, back in the saddle as they say. Lovely corrugation, just can't get enough of the stuff. Next point of interest is **ALGEBUCKINA RAILWAY BRIDGE**, this is very interesting, well definitely for the kids. Stopping here for a look around and photo. The kids are up the hill and on the track in no time. This is the longest single span bridge in SA built across the Neales River in the late 1800's. Onward to Oodnadatta. However along the way we have another casualty of the track, yet again a broken rear window, this time for Graham. Those that hung back to wait took it upon good advice to cover up their rear window as best as possible. All fixed and on we go. The reads are incredible, so aggressive. We eventually reach Oodnadatta and the famous **PINK ROADHOUSE** and boy how pink can you get. A well earned ice-cream is enjoyed. You even get to come off the track for a short time onto that strange black stuff. Some refuelled, pit stop, quick nibble and photo, very important and then back onto the gravel track to the camp ground. The dust trail from each vehicle is unbelievable and it is staring to get dark. The dust is so thick that at one point we were right down to 25km, can't see nothing in front. Thank goodness for our radios.



*Pat having a wash at
Beresford Siding*



Inspecting a creek bed



*Parked out front
Transcontinental Hotel at
Farina.*

Around the hills, having stopped for cows on the track and also trying to avoid kangaroos, that is if you can see through the dust trail. The convoy has gone so quiet, not a peep on the radio. Everyone having to really concentrate. We eventually reach camp, **ARKARINGA HOMESTEAD**, thank goodness for that. Now to set up in the dark by torch and gas light. By the time we had tea it was 8.30pm. Children off to bed, then for our evening chat around the fire and to warm up, then bed. Some are getting up extra early to go and see the sunrise. We are all so grateful that this will be a two night camp, no packing up in the morning, therefore we are going to take advantage of a lay in and to let the kids rest as well.

11.7.07 - Beautiful morning in the Painted Desert. Not much planned for today. The troops have just arrived back from seeing the sunrise. It's nice just to sit and chill out. Now we can see where we have camped and it is amazing - middle of nowhere, just vastness all around you - wow! The sun is lovely this morning, it really warms you up. Time to do a bit of reorganising and dusting out the car, as best as possible. The amount of dust insider the car is just crazy. It is an absolutely gorgeous day. Some of the travellers are going back into Oodnadatta (160km). We are going to give it a miss.

The few that were left back at camp have decided to go for a drive to the Copper Hills. Turned into some 4WD rambling, Down into creek beds and generally making our own tracks. The boys have decided to go up the mountain on foot. Oh great leader Shorty shows us that he is king of Copper Hills. More like the blind leading the blind. Back to camp for coffee and biscuits. Later in the day we drove off to go and see the sunset, you can see why it called the Painted Desert. The most amazing colours as the sun goes down. Changing every minute and the sky horizon with is wonderful colours of blue, pink and purple - just out of this world.

Back to camp before it gets too dark for yet another gourmet meal prepared by the magnificent Trevor. He prepared a variety of dishes incorporating a mixture of meat and veg. Just gorgeous. Eating together just really sets the evening in. Just munching and chatting around the campfire. After putting the kids to bed again, more fire chat and then off to bed for another early start.



12.7.07 - Boy is it cold this morning - 2C! We are off to **COOBER PEDY** all packed and on the move by 9am. Spacing the convoy out because of the dust. A short way into our morning journey in no man's land a lonely sign says that we are on Lollipop Lane, having just passed Patsies car, but trust me this is no sweet drive. The track just blends in with the sides, sometimes it looks like there is no track at all. Driving through **MOON PLAIN**, the surface of the terrain I suppose looks just like the surface of the moon, all rocky, not a shrub in sight just completely barren.

Does anything survive out here? Down Giddi Gidding Creek, these boggling names are big dips in the track. Can't imagine any water flowing through them. Some of the names are really quite comical. The terrain has changed again, less rock, almost just complete dirt. That is probably the best way to describe it, with no shrubs. The colours change all the time as well. At least today so far we have not had any corrugation. The track is actually quite pleasant. This is bliss compared to the first and second section of the Oodnadatta Track, we got shaken to no end. When you look out to the horizon you can see the heat haze, giving the mirage of water. You can understand how you would very easily become delirious in the desert and see water. The track is so smooth at the moment just like sand and keeping dust trail right down, making visibility much easier and of course allowing the cars to breath better.

Mary-Ann and Tom are not travelling with us anymore. They are making their way to Alice Springs. Now turning off to go to the **BREAKWAYS LOOKOUT** and onto some of that lovely corrugation. This had to happen sooner or later. On our left runs the famous **DOG FENCE**, this is the longest fence in the world - 5,300km separating the rich sheep growing areas in the south from the dingoes of Central Australia. The fence was erected in the 1950's and stretches from the Great Australian Bight in far WA to the Queensland Coast. Only one thing baffles me. There are some large gaps in the fence. Do the sheep and the dingoes know not to go through the gaps? We are just stopping at the scenic looking, the escarpment has changed into hills of many different colours and shapes - spectacular. You really need to see it to appreciate its beauty. Quick stop and onto Coober Pedy, Opal country, using the Stuart Highway. Wow, what is this strange terrain? I think they call it bitumen. On both sides of the highway are the Opal fields. Just heaps upon heaps of soil that has been dug out where they have been mining. Just about to enter CP town centre at our next meeting point and for those who need fuel.

Your first impression of CP is just how dusty and ungreen it is. This is of course because it is a mining town and half the population live in underground dugouts to escape the heat of the summer. Had a quick stop in town, munchies and the all important pit stop. We went and had coffee in an underground café, and some went wandering to do the tourist thing. All accounted for and now we are heading back to William Creek, this being the start of our return journey to Adelaide. Back on the dirt track again now. Sign just said 162km to WC. Very, very dusty, we are having to keep well back from the vehicle in front of us. The terrain has changed again now to more sand and those lovely sand dunes. The track is fantastic, really soft and smooth, so we are all making good time. Well it has been a while and we have reached the Oodnadatta track again although this way does not seem so rough.

Arrived at Beresford to camp, an absolutely fantastic spot, and all to ourselves. Another casualty, Gary has got a puncture. Time to set up camp. Jared helped to collect firewood and helped Trevor to get the fire going. Trevor is going to cook again for us tonight. Tonight's meal for us all is a roast, and what a delicious meal it was. You certainly can't beat that campfire taste. We are all brought together again by the mean and campfire, it really does create a good atmosphere. Plenty of chit chat and some indulgence and then off to bed.

13.7.07 - A beautiful morning. Breaky and good old packing up again. Today we are motoring on to **ROXBY DOWNS**. On the track we have passed some people on push bikes. That is going to be an endurance test, giving the aggressiveness of the track - good luck. At the moment the track is quite good and compact with minimal dust. There is also road works happening, seems very strange given where we are. Still endless views of nothingness for as far as the eye can see. We drove through the **OLYMPIC DAM MINE** area which is one of the world's largest mines producing gold, silver, copper and uranium oxide.

We have arrived at RD and refuelled. We are going to stop for some lunch and a few supplies. We have conveniently parked alongside the local police station. I reckon we have just all increased their population with our visit. Pat tells me that the track has claimed yet another casualty, his rear window. Went into the supermarket, now that's a treat to stock up on some essentials. This is not a bad place, for a mining town, nice and clean and a complete contrast to CP. Once we have all fed and organised ourselves we are going to motor on to camp, about 30km away.

Onto **ANDAMOOKA** 33km, at least at the moment we are still on the bitumen. At Andamooka we stop at the local Servo to get a ticket as we have to get permission to drive through some private land - \$25 per vehicle. An attraction here is the Big Bus which is actually two buses welded into one long vehicle. This is still a mining area for Opal. Onto **FARINA** and those horrible rocky tracks. It does eventually change to sand and some dunes. This slows us to have a bit of fun in the sand with the vehicles. The sand is a gorgeous terracotta orange.

It got really dusty so we had to space out the convoy again. However we are going to stop briefly for some of the convoy to catch up and for Shorty to fix his puncture. Yes even the hierarchy have casualties. Debbie kindly made us a cuppa whilst we were waiting - thank you Debbie. All wheels in motion and away we go. Just passing **LAKE TORRENS**. Still motoring on and on and on. All is quiet in the convoy. Dusk is upon us and again complete concentration is required. Being tail end Charlie it was our task to close any boundary gates that were open. It's amazing how dark it gets.





TOTAL TRACTION TYRES

DARREN CALLARY
0404 099 397

UNIT 8/4 CNR. DYSON
& ALDENHOVEN RD.
LONSDALE S.A. 5160
Ph: 8186 1011

sales@totaltractiontyres.com

SPECIALISING IN 4X4 - WHEELS, TYRES AND SUSPENSION



LEGENDARY OFF ROAD TYRES

www.mickeythompsonstires.com.au



80/20%



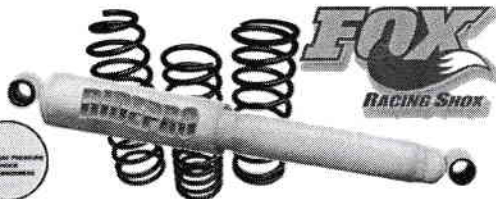
60/40%



40/60%



20/80%



QUALITY NEW & USED TYRES & MAGS—ALL BRANDS—ALL SIZES
REPAIRS—BALANCING—WHEEL ALIGNMENT—ACCESSORIES—BATTERIES
EXPERT ADVICE—QUALITY, RELIABLE SERVICE
LIGHTFORCE & STAUN PRODUCT STOCKIST, EVAKOOL FRIDGE STOCKIST
SPARE 4WD TYRE AND RIM HIRE SERVICE
ATS-RIDEPRO, BILSTEIN & FOX SUSPENSION SPECIALIST

ABN 74 280 871 853

Having navigated our way to **CAMP FARINA** this is home for the night, and yet another set up in the dark. What experts we have become. The best part of the evening is of course the campfire, especially to warm the bones. Tonight feels really cold. Time to chat and discuss the day's events, munchies, indulgence and then off to bed.

14.7.07 - Really chilly morning, best to keep moving. Time to have breakfast and pack up camp to get moving again. This morning we are making our way to Lyndhurst, for fuel stop and then on to Leigh Creek and down to Parachilna. Once we had all arrive it was time to discuss the next route to take. The decision was to drive along **PARACHILNA GORGE** and through **HANNIGAN GAP**. This proved to be an interesting drive. Started off going through creeks and winding along the foothills. Some absolutely amazing sites to see and a few challenges. Stopped in the gorge for some lunch and a pit stop. Then some good 4WD driving started. Hannigan's Gap proved to be some what of a challenge. The majority of the track was just rather large holes. One after the other. One hole, or should I say crater, put our skills to the test, especially with our trailers on tow. As we all came to a stand still to allow each other to negotiate the obstacle we saw what we thought would be an easier way around. This proved not to be so. Yes we got well and truly stuck - oops! No traction for the tyres. This does however create entertainment for the group, I endeavour to please. After several different attempts to get out Shorty decided that he would pull me out backwards. All too easy, now just a little bit to the right, different angle, same hole and no problems. By now most had negotiated their way around. Having entertained the troops it was time to move on and continue making our way along this insane track. As always, words do not describe it, you need to be there. We eventually made our way out of the gorge and started making tracks for camp. Not realising that it would take so long some of us decided to camp back at Arkapena, not so far to go and some others are going on further. A break in the drive turned us off at Stokes Hill for the sunset. Absolutely beautiful and that all important group photo. Today we have seen the best display of wildlife, from eagles on the old railway to emus and the good old kangaroo. The eagles were pretty impressive, not bothered by vehicle noise at all. It is always interesting to see them quite close to appreciate their size.

When we arrive at camp it is already dark, so another night set up. Tonight seems particularly dark, however this does allow you to see the night sky so differently. Stars that go right down to the horizon line. You would never see this in suburbia. Gary has got a lovely campfire going. Will need it tonight. Going to be a cold one. There are only four from the group camping here tonight, this makes for a rather cosy campfire get together. After our usual chit chat, time to get into our campers for the last time.

15.7.07 - Today we are making our way back to Adelaide (456km). At 8.45 with a lovely 6C, al packed up and ready to go. First to Hawker for fuel and to pump up our tyres for the bitumen. We have decided that the sound of a McDonalds is far too tempting so to Port Augusta it is. It is good to be back on the bitumen after all the dust and corrugation. Yet again the scenery changes to different shades of green and cascading hills. With generally chit chat on the radio we have managed to locate the other members of the convoy that went on further last night, so we are going to meet up in **QUORN**. This was good timing as whilst just outside Quorn we stoped alongside the **PICHI RICHI RAILWAY**, just in time for the steam train coming along. An impressive display. These heritage train journeys run between Woolshed flat and the City of Port Augusta. It would be an absolutely fabulous journey as it winds its way through the mountains. This was established in 1875 and named after Quorndon in Leicestershire, UK.

Now for the drive to Port Augusta and that McDonalds. Let's see who can spot that golden M. Port Augusta is known as the "Crossroads of Australia", a perfect base camp for journeys north to the Flinders Ranges and the great Outback. Having arrived at the Golden M, time for that long awaited and earned meal. We shall enjoy. After our nutritional meal we shall say our goodbyes to some and continue with the last leg of the journey. All fed and watered, time to go. You can definitely tell when you are nearing home ground. Oh how the style of driving changes. Time to contend with traffic that we have so not missed. We are however looking forward to a nice shower and HEAT!

We would like to thank Pat for organising such an excellent trip. Then to Trevor for his gourmet campfire meals (absolutely delicious) and then to all our other travel companions for their good company, advice and assistance.

MID YEAR DINNER

**17th August - TAFE COLLEGE Restaurant
Level 3 West Wing, 120 Currie St. Adelaide**

**Cost \$30.00 per head. \$10.00 deposit per person required tonight.
3 Course Option, Entree, Main and Dessert, 2 Choices per course.**

**Room booked for 40, so be quick.
Please tell Lyn if you would like to go.**

**Don't miss out on a great night
Sampling our future chefs creations**

QUIZ NIGHT

November 17th

**Get a table of eight together for a good fun night
Test your general knowledge**

**Everyone knows the good time had at these night so
Mark it in your diary and let the Social Committee know of you interest.
More information available soon**

Christmas at Wall Flat

Social event at Wall flat over the 1st-2nd of December

Join the fun at the start of the festive season

A trip sheet has been started so we can get an idea of numbers attending

**Games and other activities will be arranged
See Up Coming trips for details**



Member Profile



Name: Anthony Hedley

Nick Name: The Quarry Pig

Call sign: TINT

Motto: If there aint sand, rocks or mud ,
you're not 4wdriving !!

Occupation: Window Tinting (South Coast Tinting – Lonsdale)

Family: Wife Rhianna, Daughter Aleisha & Daisy the roo

Vehicle: 80 Series Landcruiser Turbo Diesel

Modifications: 3" Ridepro ATS lift kit , Mickey Thompson 35" MTZ's,
Safari Turbo Kit, Safari Snorkel, Custom Front & Rear Bars & Sliders,
Engel fridge, T-Max 9500 Winch (not installed yet but eager to get done)
MP3, UHF etc.

First Vehicle Owned: Beasty HG Kingswood Sedan

Ultimate 4WD: Mine but with lockers

Favourite Holiday Spot: Johanna Beach (Great Ocean Road)
Anywhere on the beach at Robe

Other Interests: Fishing , surfing, camping, lazing around home
with my kangaroo drinking Jim Beam

Favourite Food: 1- Jim Beam & 2- Curry's

NEED & NEED

CHARTERED ACCOUNTANTS

Our Services Include:

Accounting & Taxation, GST,
Business Advisory & Management Consulting,
Audit, Business & Estate Planning,
Statutory Record Keeping,
Investment/Retirement/Superannuation,
Computer Advisory & Processing
See Craig Need Ph. 0438-297-447

9a Anzac Highway, Keswick, South Australia, 5035
Phone: (08) 8297-4477 Fax: (08) 8297-9989 email: need@camtech.net.au

Proud sponsor of the Mount Lofty Rangers Magazine

Belair Road Auto Electrical

Prop: Tim Byrne

Repairs To: Motor Vehicle Electrical and
Electronic Fuel Injection Systems

- Air-conditioning Servicing
- Bosch Electronic Tuning
- RAA/Bosch Battery Sales
- 4x4 Accessories –sales and fitting

59 Belair Road, Kingswood 5062

Phone 8271 7617 Fax 8272 8510

E-mail: brae59@internode.on.net

Proud sponsor of the Mount Lofty Rangers Magazine

Upcoming Trips

Summary of up coming trips:

When putting your name down for a trip you **MUST include your contact number**
If you cannot attend and your name is on the trip sheet you **MUST** contact the trip leader or Trips coordinator.

22-23 September First Aid course \$120

Morgan – Advanced training. 25-26 August

Birdsville races. 29 Aug to 4 Sept.

Allawoona – North of Lameroo 15-16 Sept

Flinders Rangers. 29 Sept – 1 Oct. October long weekend.

Two separate trips running

Social – Kuitpo camp cook weekend 20-21 October. **TRIP FULL**

Riverland 4x4 challenge October dates to be confirmed.

Christmas at Wall Flat 1 -2 December.

Christmas 2007 Vic High Country or similar dates to be confirmed.

Beachport 26-28 January long weekend 2008 This is a great trip.

Trip	Morgan
Date/s – Duration	25&26 August
Trip Leader	Jeff Morgan
Convoy limit	Unlimited
Distance – Kms	Approx 160kkms to Morgan
Departure / meeting point & time	Morgan Caravan Park down by river front
Radio	UHF 27 – Club channel
RSVP – deposit	Required by
Special requirements	Advanced training 002 - 003
General comments	Park fees payable. Can have a meal in the pub.

Upcoming Trips

Trip	Birdsville Races
Date/s – Duration	29 – August to 4 September
Trip Leader	John Vinehall 0414 484 746
Convoy limit	5 Vehicles
Distance – Kms	Not sure
Departure / meeting point & time	To be confirmed
Radio	UHF 27 – Club channel
RSVP – deposit	Required by
Special requirements	Sorry boys only trip.
General comments	Have good tyres. Bush tyres are expensive.

Trip	Tamarisk – Allawoona – Mallee North of Lameroo
Date/s – Duration	15-16 Sept
Trip Leader	Merv Tucker
Convoy limit	Approx 15
Distance – Kms	Not sure when Merv is TL
Departure / meeting point & time	Tailem bend 9AM SHARP.
Radio	UHF 27 – Club channel
RSVP – deposit	Required by
Special requirements	Camper trailers at own risk must be capable offroad and prepared for anything.
General comments	Have good tyres. Bush tyres are expensive.

Upcoming Trips

Trip	Flinders Rangers.
Date/s – Duration	29 Sept – 1 Oct. Long weekend.
Trip Leader	Donald Ward
Convoy limit	15
Distance – Kms	750kms round trip
Departure / meeting point & time	Caltex Bolivar time TBA.
Radio	UHF 27 – Club channel
RSVP – deposit	None Required.
Special requirements	Some 4wd experience.
General comments	Camping \$10 per night per Adult. Kids under 18 free. \$30 track fee for weekend.

Trip	Flinders Rangers - Warraweena
Date/s – Duration	29 Sept – 1 Oct. Long weekend.
Trip Leader	Dave Willsmore & Trevor Hill
Convoy limit	15
Distance – Kms	Approx a few?
Departure / meeting point & time	See info sheet.
Radio	UHF 27 – Club channel
RSVP – deposit	Required by
Special requirements	See Trip Leaders.
General comments	Some track fees may apply.

Upcoming Trips

Trip	Riverland 4x4 event
Date/s – Duration	27-28 October.
Trip Leader	Neil Cook
Convoy limit	Unlimited
Distance – Kms	Few hours
Departure / meeting point & time	To be confirmed
Radio	UHF 27 – Club channel
RSVP – deposit	
Special requirements	Spectator event. Starts 10am- admission fee \$10 per day.
General comments	See Neil re camping.

Trip	Victoria High Country
Date/s – Duration	26 Dec to 2 or 6 Jan.
Trip Leader	Reno – 0418 828 372 & Shorty
Convoy limit	10 Vehicles
Distance – Kms	See Reno or Shorty
Departure / meeting point & time	To be confirmed
Radio	UHF 27 – Club channel
RSVP – deposit	
Camping	Mainly bush camping.
Special requirements	Be prepared for some tough tracks.
General comments	Must have good tyres.

Upcoming Trips

Trip	Christmas at Wall Flat.
Date/s – Duration	1-2 December
Trip Leader	Committee
Convoy limit	Unlimited
Distance – Kms	
Departure / meeting point & time	To be confirmed
Radio	UHF 27 – Club channel
RSVP – deposit	Required by: November Meeting. \$5 per adult Kids under 12 free.
Special requirements	Good sense of humor.
General comments	BBQ and salads provided for Sat night dinner, On site toilet will be hired, Picnic races, visit from Santa. BYO drinks and a plate of sweets or nibbles.

Trip	Annual Beachport Trip
Date/s – Duration	26 – 28 January
Trip Leaders	Required.
Convoy limit	More the merrier.
Distance – Kms	Approx 350 kms
Departure / meeting point & time	Southern Ocean Tourist Park. YOU will need to book your own camp site. Ph 8735 8153.
Radio	UHF 27 – Club channel
RSVP – deposit	Payable to caravan park direct.
Special requirements	Sand flag, compressor & fire extinguisher in vehicle.
General comments	Some training & assessment may be available. If you have never done this trip you should.

SOCIAL SCENE

MID YEAR DINNER - 17th August \$10.00 deposit per person required tonight. TAFE COLLEGE Restaurant, Level 3 West Wing, 120 Currie St. Adelaide Cost \$30.00 per head. 3 Course Option, Entree, Main and Dessert, 2 Choices per course. Room booked for 40, so be quick.

CAMP COOK WEEKEND – 19th & 20th October

This popular annual event will be on again at Jack's Paddock, Kuitpo. Mark your diaries now & more information will follow.

Christmas at Wall Flat - 1st-2nd of December

Join the fun at the start of the festive season. A trip sheet has been started so we can get an idea of numbers attending. Games and other activities will be arranged.

See Up Coming trips for details

OTHER SOCIAL ACTIVITIES

We are in the early stages of organising the following events; more details will follow in future magazines.

- On the evening of Saturday 17th November some fun at a Quiz Night.

If you have any other suggestions for a fun day or afternoon please let Lyn, Jo or Sheralyn know. We will advise you of more details soon.

As always please come and speak with Lyn, Jo, or Sheralyn tonight if you have any suggestions or questions regarding our events for the year. Have a great night! !

Social Committee



VogueLending

3 questions ???

Is your Bank giving you the 'run around?'

Does your home loan need its free annual Health Check?

Have you ever felt uncomfortable inviting a stranger
into your home to discuss finance?

*Now it's easy and hassle free to discuss your finance needs and it's totally
confidential with someone you know and can trust.*

Paul West has been a club member for 10 years and really enjoys helping people achieve
their dreams. Phone anytime on 83874255 or 0405484448.

Home Loans, personal loans, refinancing, debt reduction, First Home Buyers, 105% loans, pre-
purchase approval,

Business Finance, Seniors Finance and Investment Loans.

Proud sponsor of the Mount Lofty Rangers Magazine

TCIS Insurance Brokers Pty Ltd

Ken Bradey

Tel: 8278 7000

www.tcis.com.au

National Insurance Scheme

Australian National For Wheel Drive Council (ANFWDC)

- * **Four Wheel Drive Motor**
- * **Camping Equipment**
- * **Other Insurances**
- * **Camper Trailer & Caravans**
- * **Home & Contents Cover**
- * **Payment Options Available**

Proud sponsor of the Mount Lofty Rangers Magazine

Four Wheel Drive Courses

MLR Club Training
Contact: Jeff Morgan
Home: 8381 5404
Mobile: 0410 665 019

TRAINING DATES

Intermediate Driver Training Assessment 002 & 003 Elements only -

Morgan 25-26th August.

Trip Leaders Advisory Course - Date TBA based on numbers

DTU Skills Update Kuitpo 28-29th July

DTU Skills Update Peake 3-4th Nov

Ozi Explorer - Intermediate Users - Date TBA subject to numbers

Advisor Course 10-11th November

Assessors Course TBA

Trip Leaders

For those Trip Leaders planning trips this web site is good value

<http://www.toiletmap.gov.au>

For those with Garmin GPS's check for your latest updates

<http://www.garmin.com/support/blosp.jsp>

Club Trainers

Trainer's: Ian Manglesdorf, Paul West, Tim Byrne, Paul Tabone

Assessor's: Ken Bradey, Mark Curtis, Layne Holberton, Jeff Morgan,
Christian Whamond, Ricky Esser, George Haniotis.

Camp Meals

Fabulous Pork Tenderloin -

1 pork tenderloin roast (boneless chicken breasts can be substituted)
5 small red potatoes
3 carrots
1 medium onion (sweet if possible)
2 zucchini
1 tomato
1/4 lb. of fresh green beans
4 half-ears of corn (cobbettes)
garlic salt
olive oil
ground pepper

Method

Spread 2 layers of heavy duty foil side by side, with middle overlapping. Drizzle olive oil onto foil. Place tenderloin in the center (lengthwise) of the foil. Cut potatoes into 1/4 inch slices and place on and around the meat. Cut other vegetables into large pieces and place on and around the meat. Sprinkle with garlic salt and pepper. Cover food with another piece of foil and fold the top & bottom foil together to seal the packet. Place on hot coals for 60 to 90 minutes.

As a variation, leave out the olive oil, garlic salt & pepper, and cover the meat & veggies with Italian salad dressing instead

(Submitted by Vicki Henderson) from www.lovetheoutdoors.com

Camp Meals

Lemon Banana Pancakes

The ingredients will make about 12 large pancakes

1 cup plain flour	3 eggs
1 tablespoon sugar	2 tablespoon melted butter
1 ½ cups milk	pinch of salt

Method

- 1) Place flour, sugar and salt into a bowl and mix together.
- 2) Add eggs one at a time to flour mixture, beating well after each egg.
- 3) Mix melted butter and milk together and slowly beat into flour mixture.
- 4) Leave to stand for 2 hours
- 5) Cook pancake mix in lightly buttered and very hot frying pan.
- 6) For large pancakes pour ¼ cup or small pancakes, about 2 tablespoons of the batter into frying pan.
- 7) Tilt frying pan until batter is evenly distributed and stops running.
- 8) When pancake is dry on top and fine bubbles appear, flip over and cook for a further minute.

Lemon Banana Sauce

1 tablespoon lemon juice	½ cup mashed banana
1 tablespoon caster sugar	½ cup thickened cream

Method

- 1) Mix banana, cream, lemon juice and sugar together.
- 2) Spread mixture on pancake.

Roll up and sprinkle with a little extra caster sugar

Recipe from Guides Australia N.S.W. & ACT

If you have any recipes to share please send them to me for publication



MT LOFTY RANGERS

Lets Promote Our Club!!!

Cloth Badges	\$7.00
Car Stickers	\$2.50
Name Badges	
Initial 2 on joining	FREE
Additional	\$6.00
Replacement	\$6.00
Sand Flags	\$2.50
Tyre Plugs	\$7.50

Please see a committee member for the above purchases.

Windcheaters (fleece lined)	\$45.00	
<i>(includes name and logo embroidered on & GST)</i>		
Arctic Fleece Tops	\$45.00	
<i>(includes name and logo embroidered on & GST)</i>		
Polo Shirts (short sleeve with Pocket)	\$37.00	(no Pocket \$35.00)
<i>(includes name and logo embroidered on & GST)</i>		
Caps <i>(including logo embroidered on)</i>	\$13.00	
NEW ITEM		
Bucket Hats <i>(including logo embroidered on & GST)</i>	\$13.00	

If you require clothing please speak to a committee member.

ITEMS FOR LOAN

Books (hopefully in the future)	Recovery Kit
Club Banner	Tirfor Winch
Club Flag	Puncture Repair Kit *
GPS Promotional Videos	First Aid Kit *
Maps	4 x Lightweight Shelters with sides.

* Please replace used items

Please see Merv Tucker for any items you wish to loan Ph 8278 1414.

Trading Mart

For Sale

Nissan Patrol GU Series 3 Alloy Bull Bar Good Condition \$200.00

DMH Outback 6 Dome Tent 6.0m x 3.0m 2 Bedroom can sleep up to 6 used 4 times also has brand new fly. New canvas carry bag **\$200.00**

2 Dunlop Grandtrek AT2 265/70/16 to Nissan Patrol 3/4 Tread \$50.00ea

2 Bridgestone Duelers D693 Pattern 1/2 Tread \$50.00ea

Contact Dave Willsmore (Shorty) 0412 411751

For Sale

GU ARB Large roof rack for sale, \$650 ono

Contact Reno 0418 828372

For Sale

1 Bridgestone Dueler D693 & 1 Michelin LTX. 4-5mm tread depth, LT265/75/16. good condition, make great spares. \$30ea or \$50 both

Used, heavy duty Aluminium or Steel extending roller bearing slides. Ideal for fridge or drawers. Closed length 670mm, extended length 1800mm. \$80 pair.

Bbq Cook-On, Beachcomber .4 Burner, Timber frame. Half grill, Half plate. With lid and weather proof cover., Very Good Condition **\$75.00**

Camp Bed Two yrs old, spring frame, canvas bed. 1.85m long x 0.65m wide. Very comfortable, Small pack size. Suit junior., Excellent Condition **\$25.00**

Sleeping Bag Roman -5C rated. Insulfil fibre filling, lightweight and small pack size. Comes with compression stuff sack. Suit junior., Excellent Cond. **\$25.00**

Contact Neil Cook on 0409286629 for more info

TIME

To realise the value of 1 year, ask a student who has failed an exam,

To realise the value of 1 month, ask a mother who has given birth to a premature baby,

To realise the value of 1 week, ask the editor of a weekly newspaper,

To realise the value of 1 hour, ask the lovers who are waiting to meet,

To realise the value of 1 minute, ask the person who missed the train,

To realise the value of 1 second, ask the person who has survived an accident,

To realise the value of 1 millisecond, ask a person who has won a silver medal,

TIME waits for no one.

Treasure every moment you have.

Happy 4wding



4X4 ACCESSORIES



ACCESSORIES SALES AND FITTING SERVICE

- | | | |
|--|---|--|
| <input type="checkbox"/> Dual Batteries | <input type="checkbox"/> Air Compressors | <input type="checkbox"/> Fridges |
| <input type="checkbox"/> Side Steps | <input type="checkbox"/> Driving Lights | <input type="checkbox"/> Snorkels |
| <input type="checkbox"/> Roof Racks | <input type="checkbox"/> Storage Systems | <input type="checkbox"/> Cargo Barriers |
| <input type="checkbox"/> Bullbars, | <input type="checkbox"/> Staun | <input type="checkbox"/> Polyair Springs |
| <input type="checkbox"/> Warn Winches | <input type="checkbox"/> Wheel Carriers | <input type="checkbox"/> Fuel Tanks |
| <input type="checkbox"/> Canopies | <input type="checkbox"/> Recovery Equipment | |
| <input type="checkbox"/> Air Locking Diffs | <input type="checkbox"/> Old Man Emu Suspension | |
| <input type="checkbox"/> UHF Radios & Antennas | | |

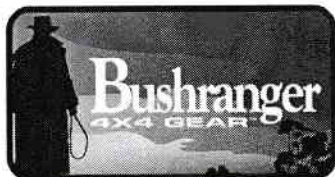
*****CLUB DISCOUNTS AVAILABLE TO ALL MEMBERS*****

*****CONTACT GLENN BULL FOR FULL DETAILS*****



**Mount Barker
4x4 Centre**

Shop 10/4 Dutton Road
Mount Barker SA 5251
Tel: 08 8391 4391



Serious 4WD Equipment



UHF CB RADIO CHANNEL ALLOCATION

USED FOR	CHANNEL/S	COMMENTS
Calling Established by law	11	To call or locate another station. Parties then switch to a conversation channel
Conversations	9, 12 to 17, 19 to 21, 24 to 30, 39	Used for conversations between stations
Highway Communications	29	Mainly used by Truck Drivers and other Highway users on the Pacific Highway in N.S.W.
	40	Mainly used by Truck Drivers and other Highway users Australia wide but not usually on the Pacific Highway in N.S.W.
Caravanners, Campers	18	Holiday Maker's communication channel, e.g., when in convoy
4WD Drivers	10	Used by 4WD enthusiasts, clubs, convoys and in national parks.
Emergency Calling Established by law	5	Can be used by anyone in an emergency situation ONLY
Repeaters Established by law	1 to 8 31 to 38	In duplex mode, repeaters need two channels to work. Receives on 1 to 8. Transmits on 31 to 38 (automatically). When within range of a repeater, it will increase the communications distance. Operation in simplex mode on these channels is not permitted when within range of a repeater.
Data Transmissions Established by law	22, 23	No voice transmissions allowed on these two channels

explore, experience, enjoy...



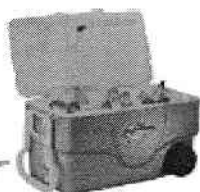
Fridges

All the leading brands, Engel, Waeco & E&A Kool on display side by side for you to compare. See us for the latest deals!



Camp Furniture

Chairs, Tables, Stools, Camp Cupboards, Stretchers and more. Check out the latest designs before your next trip.



Coolers

Coleman coolers in just about every size & shape imaginable!



Locally owned with National Warranty!

Horizon Leisure & Camping World really are the outdoor specialist, our massive buying power combined with our local knowledge ensures we stock an extensive range of products, at the very best possible prices, and don't forget we offer, **4WD club members an additional 10% discount*** on most products. Call in and speak to one of our friendly team today.

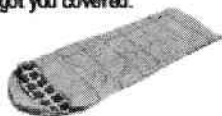


Tents

Touring tents, Dome tents, Family Cabin Tents, Hike Tents & even Camper Trailer Tents, if you need a tent check out our huge range.

Sleeping Bags

Kids Bags, Jumbo Bags, Travel Bags, Hike Bags, & School Camp Bags we've got you covered.



Swags

Swags to suit all budgets, and huge selection of styles to help you make the most of your time in the great outdoors. Available in single, king size & double options.

Horizon Leisure & Camping World

Mount Barker 20 Cameron Road Ph 83983033
Open 7 Days Sunday 11 - 4 pm

Murray Bridge 209 Adelaide Road Ph 85324667
Open 6 Days Saturday 9 - 4 pm

* Terms & Condition Apply. See Instore For Details.



**CAMPING
WORLD**

Ask the outdoor specialist

Your Committee

PRESIDENT	Dave Willsmore	0412 411751
VICE PRESIDENT	Trevor Hill	0400 676 954
SECRETARY & PUBLIC OFFICER	Pat O'kane	0408 775969
TREASURER	Nick & Sam Bray	0413 019087
ASSOCIATION DELEGATES	Paul West	0405 484 448
MEMBERSHIP OFFICER Assistants	Darren Callary Luke Hooper Gary Sawyer	0404 099397
TRIPS CO-ORDINATOR	Paul Tabone	0417 080663
EDUCATION OFFICER	Jeff Morgan	0410 665 019
MAP LIBRARIAN	Merv Tucker	0412 677 988
SOCIAL SECRETARY	Lyn Morgan Jo Reed Sheralyn Willsmore	8381 5404 8276 1212
PROPERTY OFFICER	Merv Tucker	8278 1414
MAGAZINE EDITOR Articles to: <i>e-mail:</i> southern.vales@esc.net.au	Ian Richardson	W:8381 8300 0414 322737
INSURANCE OFFICER	Ken Bradey	Wk 8278 7000
ABORIGINAL LIAISON OFFICER	David Goodenough	0439 687 166
WEBSITE	Reno Poropat reno@picknowl.com.au	0418 828372
Merchandise Officer	Narelle Palmer	

www.mountloftyrangers.com.au



www.mountloftyrangers.com.au