



Ken Bradley
11 Station Ave

Rangers' Review

Volume 4 No.7

Mount Lofty Rangers Inc.

PO Box 1150, Blackwood S.A. 5051

December 1998



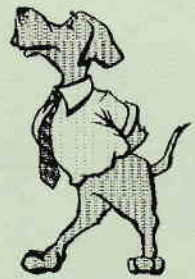
TO ALL MEMBERS OF
THE
MOUNT LOFTY
RANGERS -
HAVE A
MERRY CHRISTMAS
AND A SAFE NEW
YEAR

MOUNT LOFTY RANGERS CB & UHF CLUB CHANNEL NO 27

Sponsored by Alltrac 4 WD

Page 1

PRESIDENTS REPORT



Well Christmas is now here. It was not long ago that I seemed a mile away, but once again its here before you know it.

As you may know I took advantage of the opportunity to head off to the high country in the Alpine National Park for the Advanced Driving course with some members of our club and the Toyota Club back in November. There was such a large volume of 4WD driving with steep inclines, declines and water crossings up to door handle depth and the spectacular scenery was the icing on the cake. The company was excellent and a thoroughly enjoyable time was had by all who participated. Ted Bal(Brocky) was his relentless and flawless leader. Excluding desert crossings, anybody who has not been in terrain similar to this, has not in my opinion, experienced real offroad driving and I urge anybody who is slightly interested to do themselves a favour and go next year.

Ted has mentioned that Lake George is a goer for the January Long Weekend, (if you require more detail contact Ted or Peter Graham). Any who have spent time there will tell you it is definitely a worthwhile trip, especially for those who enjoy sand driving and coastal views.

A dozen vehicles turned up for the hills night drive run by Mallee Boy and myself. Everything ran smoothly and there have been requests for a day trip on the same tracks so they can see where they actually went? I'm sure the locals around Myponga must have thought it was an alien invasion with 12 sets of lights appearing over the hills and down to the beach. Thanks to everyone for being patient and enjoying the benefits of staying out late.

Our Christmas picnic has a good turnout with perfect weather to compliment the day. Due to a lot of hard work put in by our Social Events officer Joyce, there was plenty to do for the children and adults. A short appearance by Father Christmas put a smile on the children's faces (big & small) Thanks Joyce for the tireless effort you have put into making the social side of the club so successful.

Another person to bring to your attention is Dean Dayman. He has been a piece of the backbone of the Mount Lofty Rangers Club since the day it was founded. Without complaint he has been on the committee full time as well as taking on the role as editor. Now Dean and his wife Kathy are off to Port Lincoln for a few months casual work then off to tour Australia as they please. Thanks Dean & Kathy for your efforts and a job well done. You will be missed by us all.

The Clayton Raft Race is only a couple of months away so all of the volunteers who put their hands up to assist with the construction of the new high tech. raft will be required to participate on the construction days and possibly a trail run day. For more information contact Peter Chapman or myself.

Well that will do for this year, so from me to you, have a great Christmas and a Happy New Year and we will see you in 1999

see 'ya round
Mossiah



JANUARY 1999

SATURDAY 23RD TO TUESDAY 26TH CHOWILLA

Another invitation from Central 4WD Club for the long weekend at their standing camp at Chowilla. 4WDiving, fishing, yabbing - should be a great time. More details later

SATURDAY 23RD TO TUESDAY 26TH 'ROBE-LAKE GEORGE

Long weekend of camping and sand driving Great place to gain confidence in diving in sand and to see the beautiful coastline of the S.E. Trip Leader once again Ted Bal phone 8382 1963

FEBRUARY 1999

SATURDAY 13th-14th CLAYTON RAFT RACE

Make a weekend of it - Make a day of it - Support your Club in its bid to be the top raft club of the Association Lots of fun both days - Get involved for further details see Peter Chapman

Mount Lofty Ladies ready to earn their Basic Training Certification



Ladies in Waiting from left to right Isobelle Brett, Jenny Jones, Lynn Orbons, Barbara Almond, Lynda Moss

CLARE TRIP REPORT:

31 OCT/ 1 NOV,1998

Where oh where are the Brett's when you need them to run late and therefore do the trip report?? We arrived at Clare Caravan Park bright and early Saturday morning on October 31, only to find that everyone bar the Trip Leader's family had driven up on Friday. So we're it!

Peter, Tasha and Jessica Graham led this trip for Kerry and Doug Laird, Brian and Joyce Gray, Jenny and Peter Jones and Hubert, Lyn and Kimberly Orbons. After settling in on Saturday morning we headed off to check out Clare's highlights. Most of the group went for a leisurely historical walk, while some did a mother and daughter trip around the shops.

After lunch we headed out to Mintaro. Williams Sweets'n'Stuff proved popular, especially the truly gob sized gobstoppers. Then onto a few wineries which of course was good fun. By the way, was our Trip Leader dropping a hint for tardiness at Mintaro Winery when he started his engine, or did that tippie make him forget how many were in our group!!!

Being inveterate 4WDers, we managed to find a summer only track to drive down which proved to be a great source of wood for our campfire. This proved very handy as it became quite cool after the sun down.



Peter Jones collecting wood



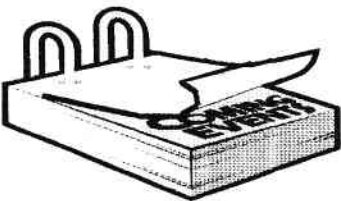
Back to the wineries: we visited Wilson's, Pike's and Waninga Wineries. Hubert was so impressed by Waninga's grounds that he had a crack at getting permission to camp by their dam, but the owner's weren't interested. Full marks to Kerry and Doug on this outing. They were the only ones wearing Mt Lofty Rangers club shirts.

Back to the Caravan Park for Happy Hour and a campfire tea. (Ask Peter and Jenny Jones to tell you about the latest in campware designer wine glasses. They come with complimentary green stems that are pliable enough to pack in any nook or cranny.) This time was a real success as we were spread out at various sites (a tent, cabin & vans) & allowed us to get together to tell the usual campfire tall stories. We just beat the fireban season & Kimberly made sure the fire was out by carrying buckets of water from the tap.

Sunday morning after a leisurely breakfast we headed out west of Clare for a scenic drive, ending up at an interesting track near the Spring Gully Conservation Park campground. Back to Jim Barry's Winery for lunch on the lawn in the sun and of course, some tastings. As we all had different commitments we found our own leisurely way home after lunch.

Many thanks to everyone for their company and to Peter for an enjoyable and very relaxing weekend.

Hubert, Lyn and Kimberly Orbons.



SOCIAL REPORT

The Christmas Picnic has passed and I trust everyone enjoyed the day Dates for next year are:-

Warrawong Sanctuary - Sunset Walk

March 13th or 27th a Saturday Cost \$12.00 per person for a group
Date to be decided of 15 or more (\$15.00 per person if less)
Time approx 7.15pm

Suggestions for meal before hand

1. Restaurant:- \$6.00 to \$17.00 per serve depending on choice
- 2 Meet at Mylor Oval for a shared meal.
- 3 Hungry Jacks

Visit to ALLTRAC Workshop

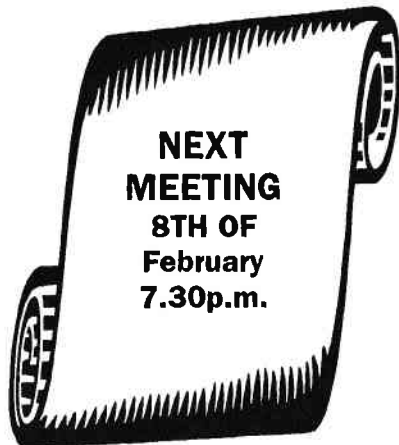
April 30th a Friday Time - 7.30pm Meet at Alltrac's
They would like a group of 15-20 so please put names on list

Visit Old Adelaide Gaol

May 23rd a Sunday Time 11.00am
Cost:- Adults \$6.00, Children \$3.00

Mid-Year Dinner

June 26th a Saturday Further Details in New Year
If you show interest in these functions please support them
ANY QUESTIONS PLEASE CONTACT ME & I WILL TRY TO HELP
JOYCE GRAY 8278 1576



ONE HELL OF A HOLIDAY

OR

A HOLIDAY FROM HELL

EPISODE 3

Monday 24/8/98 Weipa

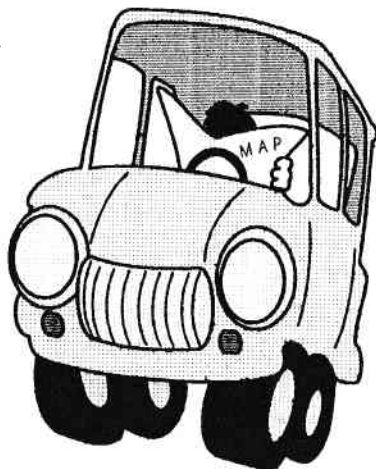
Once the rest of the group left the rest of us that were left went fishing down by the Railway bridge at Weipa for the rest of the afternoon as it was quite hot about 36 degrees, I did see a large fish take the bait but it wasn't on my fishing line, in fact I didn't even get a bite even though I tried really hard. On returning to camp we all decided to try and find alternative accommodation in the town as it wasn't very pleasant living in the tent when it was so hot, we decided to move into "Riverview Cabins \$50-00 per night at Evans Landing which is near the main boat ramp and town wharf area, these cabins were the old contractors quarters they didn't look all that flash on the outside but were clean and comfortable on the inside they even had a TV and were AIRCONDITIONED great now we can stay cool, day and night.

Tuesday 25th August

We moved into the cabins and made use of Marika's hire car while it was available, but the restrictions on it were a little over the top, Marika was allowed to do 200 kilometres a day on the bitumen only, not bad you say, but considering that Weipa has only about 25 kilometres of bitumen on which to travel. Marika, Elaine & I had a look at the aboriginal settlement of Napranum which was reasonably tidy but the local council was burning off the scrub around Weipa so the air was full of smoke, We had tea at the only takeaway shop in Weipa the Snak Shak where they served great fish (Barramundi) and chips and a plate of salad for only \$6-00 which was great as the pub is the only place to get a takeaway feed and that cost a minimum of \$12-00. I paid a visit to the towns only physiotherapist to try and get more movement in my knee and Elaine's rash had improved slightly.

Wednesday 26th August

My leg is a little better today, but Elaine's rash is back with a vengeance, I visited the physio and Elaine went to the Doctors again, boy I'm glad they bulk bill at this place, spent the day around the cabin while Allan and Marika went fishing we are now down to one car as Marika had to take the hire car back today. At about 8.00 pm. Elaine's rash was really bad she was in agony with the burning sensation of the rash so I decided to get a taxi to take us to the Weipa Hospital once more, Had to wait about 30 minutes for the one and only taxi to arrive, but they had two drivers Once at the hospital the doctor checked Elaine over and said that she would be admitted so as they could monitor the rash and try and get her temperature down with cold baths and had the ward air conditioning on full and also a fan as well. Elaine



was the only white patient in the hospital that night. I returned to the cabin about 10.00 pm. by taxi at a cost of \$12-00 each way, I also booked the taxi for the next morning at 7.30 am. so as I could make my physio appointment at 8.00 am.

Thursday 27/8/98

I waited until 7.50 am. for the taxi to arrive and then had to get Allan to take me into the physio, in my Suzuki even though it was a little difficult to get in with my leg still swollen, we didn't see the taxi during our travels in after the physio I went and saw Elaine who was now allowed to return to the camp after a series of blood tests and her temperature had returned to normal, So Allan conveyed me back to camp and then went back to get Elaine, so as not to waste a trip he saw the sister at the casualty are told her that he had a severe ear ache, after treatment he was told that the Suzuki Club was banned from attending the Weipa Hospital ever again, in the polite words of if you are a member of the Suzuki Club you can piss off or pay dearly it was said in jest I HOPE I think we had kept the staff well employed for the short time that we were there. After returning to camp Elaine & I packed the car well I think it was more like Elaine packed the car as I couldn't do much as it is impossible to carry anything when you are using crutches. Allan borrowed our car and took Marika down to the repair shop so as she could pick up her car. Guess what it wasn't ready they had forgotten to straighten out the front bumper bar they thought that as it missed the front wheel by 2 inches when it was stationary it would be ok also they hadn't fastened down the battery as well, departure time was delayed for another hour. (1.00 pm.) So we decided to leave and make our own way to Bramwell Station a distance of about 187 kms and hopefully Marika and Allan would catch up. Elaine had to drive this was her big moment to take over the piloting for the rest of the trip she also had to take off the glove box lid so I could fit in the passengers seat of our mighty (shoe box) machine Elaine coped well with the back seat driver sitting alongside of her offering advice on her first real four wheel driving experience, she even offered to open the door for me and push me out anyway we finally made it from Weipa to Batavia Downs the road was terrible. Once on the Telegraph Road Elaine made her first major river crossing at the Wenlock River in fine style, I couldn't have done better myself, we continued on the road was terrible and very badly corrugated and huge bulldust holes 2 to 3 feet deep the full width of the road and about 150 to 200 metres long, as we were coming out of our first bulldust hole I saw a large cloud of dust coming towards us, and saw a vehicle land in front on our side of the road about 300 metres in front, as we stopped a guy got out of the car (1985? Range Rover) he was cut about the shoulders by flying glass, and appeared to be dazed as he was trying to contact the rest of his party by radio, he said his group was following and pointed to the south when in fact they were coming from the north, they arrived soon after and took control, the driver said all he had to do was change the two flat tyres and be on his way, as the car was still mobile. I wouldn't have wanted to drive the car in its present state as the roof had been lowered about a foot, anyway I was glad that it didn't happen to us as we had had enough bad luck this trip. We made Bramwell Station and decided to stay in the cabin overnight as it would save me having to crawl in the dirt to get in and out of the tent, the price of the cabin was \$50-00 per night with linen. While Elaine was unpacking the car she noticed a small oil stain on the back first place to check this time is the axle housing, yep its broken again SHIT now what, no one else around, spoke to the owner of the

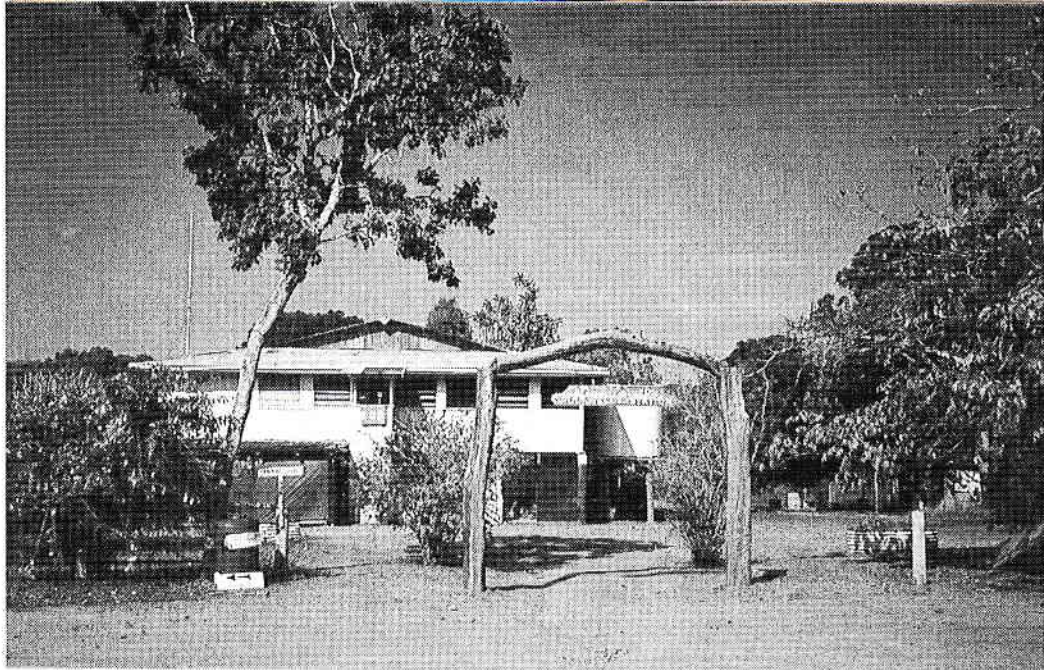


One Ranger Rover the worst for wear after a roll over

station Theresa Heinemann who said that we could use the station phone tomorrow to call the RAA PLUS and the RACQ Elaine was very upset and I wasn't too happy either, It appears that we will be residents of Bramwell Station, may be Allan & Marika will call in as they come past so as to let the others know what is happening , I made a phone call to Punsand Bay but the rest haven't arrived yet left a message there.

Friday 28/8/98

We are now residents of Bramwell Station and have made Telstra rich again their profits should be way up this year, better buy some shares, I phoned RACQ and had a heart attack as their fee from Welpa to Bramwell Station a total of 374 kms return is \$1200-00 and the soonest they can pick us up is on Sunday, We also rang RAA PLUS and explained the situation to them again, they rang around and found a trucking company that transports supplies to the Stations on the Cape this company would pick up the car and drop it over the first cliff it came to. No I didn't mean that, they would pick up the car and one person and deliver it to Cairns a distance of 1722 kms return for a fee of \$900-00 and the RAA PLUS would assist us by paying \$326-00 towards the towing with either way the choice was ours the main problem with the truck was that it wouldn't be at Bramwell until Wednesday, The Welpa option meant an extra \$300-00 towing fee, also it meant I had to air freight parts to Welpa and then drive down the rough road again, so we elected to go to Cairns, The rest of the gang arrived at Punsand Bay and rang us I arranged that on the return trip to Cairns they stop and pick up Elaine to take her back to Cairns as there was only one seat in the truck that was taking the car, if not it meant that Elaine would have to fly out by the mail plane and knowing our luck this holiday the wheels may have fallen off. More bad news from home a



Bramwell Station

good friend had passed away suddenly, so we were upset again our host was great and helped us through this difficult day, To help pass the time Elaine helped Theresa with the ironing. We could have borrowed the station Toyota Hilux and gone for a drive but I didn't like the chances we had if we had to stop in a hurry because it didn't have any brakes. The only way to stop was to hit a tree, or travel very slowly.

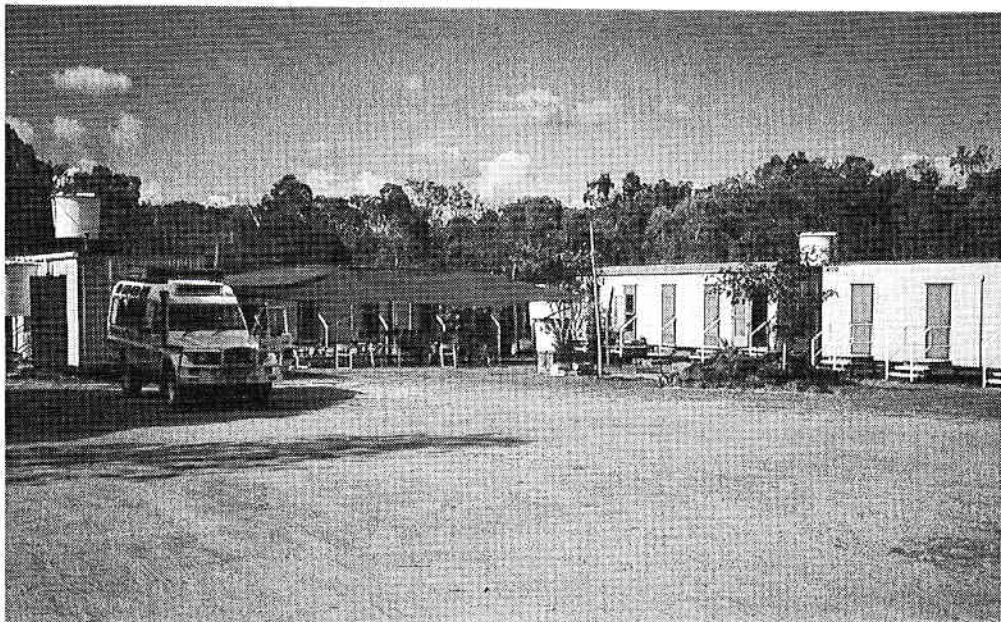
Saturday 29/8/98

Boy it was cold overnight 15 degrees the station was visited by missionaries Gordon & Cora Davis spoke to them for quite awhile til lunch time Gordon suggested that if the rash is still persistent contact a Doctor Lansky at Mossman as he is an old time doctor who specialises in tropical diseases , I now had a job at Bramwell I was the new bar person, this gave Theresa a break as the bar was about 500 metres from the homestead and every time some came she had to walk down to the camping area to open the bar, Elaine also has a couple of new jobs, she now starts and stops the generator and balances the bar books.

Sunday 30/8/98

An uneventful day spent most of the time talking to Theresa about her property which covers about 800 square kilometres and has about 3,500 head of cattle on it during the wet her property is the last that can be accessed from the north and she has a lot of trouble with people coming from the north and stealing her cattle. To go south during the wet she has to drive about 15 kms south then cross a creek in a tinny then drive an old LJ 50 down to the Wenlock River, leave that near Moreton Telegraph Station then cross the Wenlock in another tinny then drive 25 kms in another LJ 50 to Batavia Downs which has the only airstrip in the area not affected by flood waters. The Wenlock River when in flood peaks about 54 feet above normal water level. Bramwell

Station homestead area doesn't flood in the wet season. Theresa who is in her mid seventies operates this property by herself as well as the tourist complex which can cater up to 30 live in guests (cabins) and a lot of campers. She is part aboriginal and has lived at the station for about 50 years. Cold drinks and beer and lollies are available so long as you get there before Michelle.



Monday 31/8/98

Quests Cabins at Bramwell Station

Another hot day, 36 degrees. Large group of tourists expected tonight, had dinner with Theresa. It was great. Soup, Roast Malaysian chicken, steam jam pudding for dessert. Hot overnight about 26 degrees.

Tuesday 1/9/98

Michelle rang to say that the rest of the gang would call through tomorrow and pick up Elaine about lunchtime. Elaine said it will be great to see some faces that we know. Garrett appeared out of the dust about 12.30 pm and stayed for about 2 hours, had a few drinks and I went out with him to check out the loading ramp, so as I can load the Suzuki tomorrow morning when the semi comes to get me. A pig hunter who was friends with Theresa came out with 5 pig dogs and killed a few wild pigs. The news from the coast was that it was very wet with Innisfail having 11 inches in 24 hours and Townsville having a total of 19 inches in the same time, that is nearly Adelaide average yearly rainfall, and 7 inches of that total fell in 9 hours. Bramwell was in need of rain, any amount would do, as the creek at the rear of the homestead was fast drying up, and restrictions were put on the tourists filling large water containers. The day was another hot one of 37°C and the night was down to 29 degrees.

Stay tuned for the final exciting episode of a holiday from hell.

Phill & Elaine

Alltrac 4WD

Keep your 4WD in TOP condition. *Alltrac 4WD* can Service your vehicle and stamp your service booklet to ensure warranty conditions are adhered to. Our service technicians work on 4WD vehicles every day and they are 4WD enthusiasts as well. This gives them the knowledge of knowing exactly what to look for when servicing *your* vehicle and the exceptional standard of workmanship required to ensure that you don't get let down when away on the beaten track. Remember, for 4WD service, repairs, and wheel alignment *Alltrac 4WD* are the experts. We have quality checking systems in place to ensure that the work performed on your vehicle is totally and independently double checked prior to release to you, so that you can head off to the outback with absolute confidence

Alltrac 4WD 305 South Rd, Mile End, 5031
ph (08) 8234 5299 a/h 018 846 544

SAA4WDC GREGORY BOOK OFFER

A selection of books from UNIVERSAL PRESS have been made available to clubs within the Association at a reduced price.

MEMBERS WISHING TO PURCHASE ANY OF THE PUBLICATIONS BELOW SHOULD TAKE YOUR MEMBERSHIP BADGE TO UNIVERSAL PRESS 21 WRIGHT ST, ADELAIDE PHONE 8231 9944

<i>PRODUCT DESCRIPTION</i>	<i>R.R.P</i>	<i>DISC</i>	<i>COST</i>
Adelaide Street Directory 35th. Edition	\$27.95	45%	\$15.37
Gregorys Adelaide Street Directory 46th Edition	\$24.95	45%	\$13.72
UBD Motoring Atlas of Australia 3rd Edition	\$24.95	45%	\$13.72
Robinsons Road Atlas of Australia 15th Edition	\$24.95	45%	\$13.72
Gregorys 4WD Going Bush	\$19.95	45%	\$10.97
Gregorys 4WD Escape Volume 1	\$47.95	45%	\$26.37
Gregorys 4WD Escape Volume 2	\$49.95	45%	\$27.47
Gregorys 4WD Service Manuals (Series 500)	\$47.95	45%	\$26.37

CLASSIFIED ADS



Sheryl Penno F.G.A.A.

Manufacturing Jeweller

Gemmologist - Designer

For ALL your Jewellery needs see Sheryl first

Phone: 8388 8265

AS

Plumbing and Gasfitting

Specialising in:

- * Bosch Hot Water
- * Hot Water Systems
- * Boiler Services
- * Storage Hot Water
- * Evaporative Cooling
- * Gas Heating

Shaun Lawson

9 Jacqueline Avenue, Woodcroft

Tel/Fax (08) 8387 5115 Mobile 041 1794 558

Phone: 018 857 622 LIGHTING*POWER
* HOT WATER
*STOVES

OVENDEN ELECTRICAL

*INSTALLATION *MAINTENANCE
*DOMESTIC *COMMERCIAL

72 TURNERS AVE, HAWTHORNDENE
S.A. 5051

TCIS Insurance

Brokers Pty Ltd

offer a full range of insurance covers
to club members

Ken Bradey

Ph 08 8278 7000 Mobile 018 807 934

Lic. R 24694 Telephone 8382 1963

Ted Bal

Quality 2nd fix Carpenter

24 Baanga Road
Morphett Vale SA 5162



Camp Oven Collectables Corner

Chicken with a kick

This recipe is slightly different than the norm but makes quite an enjoyable meal. The advantage of chicken is that it absorbs and compliments the flavours of other ingredients.

4 breast of chicken

1 cup of sweet sherry

1/2 cup of mild soy sauce

2 sweet potatoes

1 small tin of apricots

2 bananas, sliced

1 cup of peach chutney

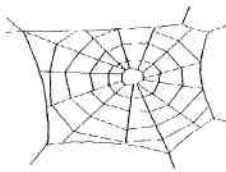
Salt to taste

Brown the chicken in the pot and then add the sherry and soy sauce. Simmer until nearly done and then pack the sweet potatoes, apricots and bananas on top. Close the pot and simmer for 40 minutes, finally add the chutney and seasoning and wait a further 20 minutes then serve.

This is recipe No. 2 from a South African camp oven cookery book.

Enjoy

Peter J



WEBSITES OF INTEREST

Simpson Desert: <http://4wd.sofcom.com/Places/Au/Simpson/Desert.html>

Gunbarrel Highway: <http://4wd.sofcom.com/Places/Au/Gunbarrel/Highway.html>

GPS Internet sites

GPS Manufacturers

<http://galaxy.einet.net/editors/john-beadles/introgps.htm>

US Coast Guard's Navigation Information web site

<http://www.navcen.uscg.mil>

Univertity of Texas



TRADING MART

Sell, Buy or Exchange



Sell - Allen Towbar (2 Tonne towing capacity) to suit Toyota Landcruiser HZJ 75.
\$100.00, Set of Toyota Landcruiser Manuals/Chassis and Body Repair & 2F
Engine Repair Manual \$50.00 the lot. Contact Ted Bal Mobile 8382 1963 ah

Sell - Toyota 60 Series — SPARE PARTS & ACCESSORIES Brown Davis Alloy
Watertank fits behind seat \$150.00, Auxiliary Fuel tank and Filler \$200.00,
R.V. Products rear Wheel carrier \$200.00, Alloy side steps \$120.00, Towbar
\$90.00, Serviceable Clutch & Pressure Plate \$30.00, Standard Fuel tank, side
mirrors, neoprene bushes, front window Phone PAUL WATERS 8381 7055

Sell - Toyota Wheels 15X7 Sunraysia Rims with 10r15 Adventurers 4 @ \$40.00
each o.n.o - Suit Trailer or spares, 1 wheel with 10.5r15 Hankook, good tyre
\$120.00 o.n.o. Phone PETER GRAHAM A/H 8370 6224

Wanted to Buy 16" wheels to suit Nissan GQ Utility also 1995 Workshop manual
for same model Contact Malcolm Curtis Phone (08) 82786813

Sell - UHF Radio Phillips SM620, Scanner, 40 Channel \$210.00, also AM< Pierson
Simpson 40 channel upper & lower side band \$130.00. Hand held AM \$50.00 &
SWR & Antena Matcher \$50.00 Gail or John Dodd ph 8536 4736

Sell - Toyota 1988 Mid Wheel Base FJ73 Petrol, excellent condition, Rego till Feb 99
162,000km, Bull Bar, Air Conditioning, Ultimate suspension, long range
auxiliary tanks, dual batteries, snorkel, plus many other extras \$16800
Contact Max Almond 82783848

Your Committee

PRESIDENT	Mark Moss	Wk 0418 833419 Hm 8383 6324
VICE PRESIDENT	Clyde Paton	Hm 8278 1964
SECRETARY & PUBLIC OFFICER	Dean Dayman	Wk 8346 7999 Hm 8296 6390
TREASURER	Hubert Orbons	Hm 8278 8142
ASSOCIATION DELEGATE	Max Almond	Hm 8278 3848
MEMBERSHIP OFFICER	Michael Brett	Hm 8387 1163
TRIPS CO-ORDINATOR	Peter Graham	Hm 8370 6224
EDUCATION OFFICER	Ted Bal	Hm 8382 1963
MAP LIBRARIAN	Merv Tucker	Hm 8278 1414
SOCIAL SECRETARY	Joyce Gray	Hm 8278 1576
PROPERTY OFFICER	Michael Brett	Hm 8387 1163
MAGAZINE EDITOR	Dean Dayman	Hm 8296 6390
INSURANCE OFFICER		